

# 2016 REPORT TO OUR COMMUNITY



## NOW MORE THAN EVER



The **COMMUNITY** Foundation *for* Greater New Haven



**NOW MORE**

With some of our community's most cherished values and most needed programs under assault, people are responding.



**THAN EVER**

2017 is a time to recommit to one another and to our shared belief that together we can build a stronger future for Greater New Haven.

# COMMUNITY NOW

“It is gratifying to know that, whatever the course of events, you are helping others to do good. Many of us can afford to support some part of the vast network of charities that one of our former presidents called ‘a thousand points of light.’ These points of light are best seen, like stars at dusk, against a darkening sky.”

Timothy Snyder, Levin Professor of History at Yale University, *On Tyranny: Twenty Lessons from the Twentieth Century*



“People are resisting misogyny in hand-knit hats, resisting xenophobia while eating donated pizzas at airports, resisting — above all else — their own devastation and disconnection. We must crouch in a protective posture and also embrace and dance and paint and write poems and teach and heal and surprise and dream and plan.”

Courtney E. Martin, “The Twin Forces of Love and Resistance,” *On Being*, February 10, 2017

“The first step toward tolerance is respect and the first step toward respect is knowledge. ”

Henry Louis Gates Jr., Alphonse Fletcher University Professor and Director of the Hutchins Center for African and African American Research at Harvard University

# MORE THAN EVER

## Contents

|                                   |    |
|-----------------------------------|----|
| Voices                            | 4  |
| Leadership                        | 6  |
| Funds of The Community Foundation | 8  |
| Organization Funds                | 22 |
| Donors to Foundation Funds        | 23 |
| Gifts In Memory and In Honor      | 31 |
| Grants and Distributions          | 32 |
| Professional Advisors             | 48 |
| Nettie J. Dayton Circle           | 50 |
| Volunteers                        | 52 |
| Investments/Financials            | 54 |
| Professional Staff                | 56 |

Inspirations and Highlights  
*throughout this document*

“There is a Broadway musical reminding us that a broke, orphan immigrant from the West Indies built our financial system, a story that reminds us that since the beginning of the great, unfinished symphony that is our American experiment, time and time again, immigrants get the job done.”

Lin-Manuel Miranda Commencement Address, “The Stories We Tell,” University of Pennsylvania, May 16, 2016

“There are truths that need to be spoken now, spoken out loud and unapologetically by people who know them to be true. Spoken with love, yes, but also fierce conviction — truths about the validity of science, the perils of climate change, the nature and price of injustice, the insanity of racism and all the other isms creeping out from beneath their ill-concealed rocks, the importance of civil and human rights and why they matter for all of us, how worsening poverty hurts everyone, the opportunities before us to create and innovate our way to a better future. These are not partisan truths but rather human truths.”

Grant Oliphant, CEO, The Heinz Endowments, “SILENCE,” *THE Point Blog*, January 10, 2017

“Ultimately, America’s answer to the intolerant man is diversity...”

Robert F. Kennedy, U.S. Senator and U.S. Attorney General “Extremism, Left and Right,” *The Pursuit of Justice* (1964)



# Voices

To understand the tenor of our times, The Community Foundation has been listening. We follow national thinkers. We seek information from local experts. We talk to our grantees and donors. The Foundation continues to listen and to look for input on how we collectively can best serve our community in light of local, state and national events. Some of what we are hearing is quoted in this annual report. Please continue to let us know what you think.



“There is no executive order; there is no law that can require the American people to form a national community. This we must do as individuals and if we do it as individuals, there is no President of the United States who can veto that decision.”

Rep. Barbara Jordan, 1976 Democratic National Convention Keynote Address

“[We] need to protect workers... . The societal units protecting workers best are healthy *communities* — where local businesses, philanthropies, the public school system and universities, and local government come together to support a permanent education-to-work-to-life-long-skill-building pipeline.”

Thomas Friedman, “Smart Approaches, not Strong-Arm Tactics, to Jobs,” *New York Times*, January 25, 2017

# MORE THAN EVER

“Rebinding the nation means finding shared identities, not just contrasting ones. If we want to improve race relations, it’s not enough to have a conversation about race. We also have to emphasize identities people have in common across the color line. If you can engage different people together as Marines or teachers, then you will have built an empathetic relationship, and people can learn one another’s racial experiences naturally.”

David Brooks, “The Danger of a Dominant Identity,” *New York Times*, November 18, 2016

“We’ve never really seen anything like this before. Hate crimes are on the rise. Intolerance is on the upswing. Fundamental liberties and important gains secured during the last century such as voting rights, LGBTQ equality and education equity appear to be at risk. ... Truth is out... we need committed, coordinated and comprehensive, **citizen-driven** responses. We need balanced approaches that mix activism and advocacy, non-profits and for-profits, politics and principles.”

Jonathan Greenblatt, CEO and National Director, Anti-Defamation League, “Free Speech, Fair Play, and Fragile Truths,” *Anti-Defamation League Blog*, April 28, 2017





# COMMUNITY NOW

## Leadership

### Board of Directors

Kica Matos, Chair

James E. Ryan, Vice Chair

Khalilah L. Brown-Dean

Emily Byrne

Alicia Caraballo

Roxanne J. Coady

William S. Colwell

Kellyann V. Day

Joseph W. Gordon

Carlton L. Highsmith

Flemming L. Norcott Jr.



# MORE THAN EVER

May 2017

Dear Friends:

Community is an eternal value. Throughout the ages, humankind has relied on the bonds of community for protection in the face of common challenges and for collaboration to chart a future course together. In Greater New Haven, we have learned that progress is only possible when we come together and act together. The growth of The Community Foundation over the last 89 years is a reflection of this truism; The Foundation is the embodiment of the commitment of the people of our region to one another and to the future generations that will come after us.

The year 2017 is a uniquely challenging one. The very idea of community is under assault, as the bitter rhetoric of intolerance and the public policies of division exploit the disconnections in our national life. At the same time, the public resources that have long supported our nonprofit sector in doing the work of building a stronger community — work to serve those most in need, work to create connections that transcend our differences — are facing devastating proposed budget cuts.

To understand and be equipped to deal with these times, The Foundation has been listening, both to local voices and to those from further afield. Some of what we are hearing is quoted in this annual report.

Many of The Foundation's core priorities are at risk. For two decades or more, narrowing racial and ethnic disparities in health outcomes and protecting advances made by women have been central goals, as has been our support for local arts institutions. More recently, our efforts to support documented and undocumented immigrants, to advance criminal justice reform and to help build a sustainable and credible local nonprofit press have become important priorities.

Our commitments in all these areas remain unshakeable, even as we face a suddenly and dauntingly hostile environment.

We are tackling these challenges from a position of strength. With more than \$19 Million in new gifts and transfers to The Foundation in 2016, including \$1.4 Million from more than 11,000 gifts in last year's Great Give® (and an almost equal amount in The Great Give® 2017), we see once again that ours is a deeply connected and generous community. And from all that we know of this community and the many outstanding nonprofit organizations that make it what it is, we have great confidence that, with continuing support, our nonprofit sector will be able to meet the challenges of our time.

*Now more than ever*, this is the time to stand up for community. It's happening. The marches, the vigils and the social media connections that we are witnessing in Greater New Haven all speak to a new and stronger yearning in our community to come together, to recommit to one another, and to engage fully and deeply in the name of building a stronger future. The Foundation is committed to doing our part to bring our community together and to move our community forward. Our proud legacy of philanthropy demands no less.

Philanthropy has been famously described as "a thousand points of light." In his 2017 book *On Tyranny*, Yale historian Timothy Snyder wrote that "these points of light are best seen, like stars at dusk, against a darkening sky." Now more than ever, inspirational philanthropy is needed in Greater New Haven.

We invite everyone to join with us in the work of community.

  
Kica Matos  
Chair, Board of Directors

  
William W. Ginsberg  
President and Chief Executive



# COMMUNITY NOW

## Funds of The Community Foundation\*

Twenty-four new funds were established at The Foundation in 2016, most of which represented donor advised funds and a continuing influx of funds transferred to The Foundation for investment management. Year after year, donors’ charitable investments support our community, addressing immediate needs and growing to keep pace with the community’s future. We thank our donors for their generosity and community spirit.



The 10.05 Fund  
Est. 2010 by Brad Collins and Nancy Clayton.

The 44-62 Fund  
Est. 2014 by the Seedlings Foundation.

Alliance of African American Nonprofit Executives  
Est. 2008 by members of the Alliance of African American Nonprofit Executives.

Achievement First Fund for New Haven Youth Enrichment  
Est. 2013 by Achievement First.

**Alexion Pharmaceuticals Fund**  
Est. 2016 by Alexion Pharmaceuticals Inc.

Anthony P. Adinolfi Jr. Fund  
Est. 1997 by bequest of Julia DeCapua.

Abner A. & Hannah S. Alderman Fund  
Est. 1969 by gifts from family and friends of Hannah S. and Abner A. Alderman.

Olive Alling Fund  
Est. 1993 by Olive A. Alling.

Elsie M. Alling Fund  
Est. 1961 by bequest of Elsie M. Alling.

Margaret Mary Allman Fund  
Est. 2012 by bequest of Margaret Mary Allman.

Jeanne Meyers Amore Memorial Scholarship Fund  
Est. 2004 by Susan Asarisi, Nancy Boney, John Meyers, and Kathryn Tonucci.

Margaret M. Amrich Fund  
Est. 2006 by bequest of Margaret M. Amrich.

Angel Fund  
Est. 2002 by Joseph and Shelly Cogguillo.

**Chip and Barbara Angle Fund**  
Est. 2016 by Chip and Barbara Angle.

Angle Family Fund  
Est. 2015 by Barbara B. and Richard W. Angle.

Anonymous 106 Fund  
Est. 2003 by an anonymous donor.

Anonymous 108 Fund  
Est. 2001 by anonymous donors.

Anonymous 110 Fund  
Est. 2010 by an anonymous donor.

Anonymous Fund  
Est. 1998 by an anonymous donor.

Diane Fried Aiker & Walter H. Aiker Fund  
Est. 2005 by Diane and Walter Aiker.

Dr. Stephan Ariyan Foundation Fund  
Est. 2001 by Dr. Stephan Ariyan.

Mary B. Arnstein Fund  
Est. 2001 by Mary B. Arnstein.

Clara Stella Tropeano Arpaia Memorial Fund  
Est. 2012 by Lisa F. Arpaia, Esq.

Sandra Arpaia Scholarship Fund  
Est. 1996 by A. Thomas Arpaia.

Artist Next Door Endowment Fund  
Est. 2008 by the Arts Council of Greater New Haven.

Arts Fund  
Est. 1980 by The Community Foundation for Greater New Haven.

Fund for Arts and Justice  
Est. 2014 by an anonymous donor.

Russell H. & Lucie E. Atwater Fund  
Est. 2008 by bequest of Russell H. & Lucie E. Atwater.

August Family Fund  
Est. 2003 by Stephen P. and Judith N. August.

Autumn Fund  
Est. 2013 by Ethel and Eric Berger.

Axtmayer Cancer Fund  
Est. 2011 by Alfredo L. Axtmayer II.

Bambi Bailey Scholarship Fund  
Est. 2001 by Barbara Carlson.

Albert & Ella Baker Fund  
Est. 1969 by bequest of Albert A. Baker.

Albert H. Barclay Sr. Fund  
Est. 1951 by the Armstrong Rubber Company.

William C. Barclay Fund  
Est. 1956 by bequest of William C. Barclay.

Albert Hampton & Catharine Hooker Barclay Fund  
Est. 2003 by Thomas H. Barclay, Albert H. Barclay Jr., Emily M. Barclay and Catharine B. Fender.

Barnett Family Fund  
Est. 1986 by Joni Barnett.

Alice M. Barnum Fund  
Est. 1958 by bequest of Alice M. Barnum.

Barrie Muir Fund  
Est. 2009 by an anonymous donor.

Nancy H. and Henry E. Bartels Fund for the Garden Club of New Haven  
Est. 2013 by Henry E. and Nancy Horton Bartels.

Henry E. & Nancy Horton Bartels Fund for Education  
Est. 2008 by Henry E. and Nancy Horton Bartels.

Myrna & Arnold Baskin  
Est. 2009 by Myrna Baskin.

### Baxter Fund



Est. 2016 by Dolores Giannini.

Richard and Alice Baxter Fund  
Established in 2015 by Richard and Alice Baxter as a donor advised fund.

William T. & Florilla B. Beazley Fund  
Est. 1995 by bequest of William T. Beazley.

Becky Fund  
Est. 2005 by anonymous donors.

Anne Hope Bennett Fund  
Est. 1943 by bequest of Anne Hope Bennett.

Berry-Hulin Family Fund  
Est. 2003 by Laura A. Berry & Bernard M. Hulin.

Carla A. Birmingham & Deborah Kruglik Fund  
Est. 2002 by Carla A. Birmingham.

Bishop Family Fund  
Est. 2005 by Susan Whetstone.

Joseph & Susan Bishop Fund  
Est. 1985 by Susan Bishop.

Miriam E. Coleman Birdwhistell Fund  
Est. 2015 by Nan Birdwhistell.

Margaret T. Bixler Fund  
Est. 2012 by Margaret T. Bixler.

Eugene M. Blake Fund  
Est. 1970 by bequest of Eugene M. Blake.

Harold L. & Leonas T. Blakeslee Fund  
Est. 1987 by bequest of Harold L. Blakeslee.

Board of Directors Fund  
Est. 1996 by the Board of Directors of The Community Foundation.

E. Irene Boardman Fund  
Est. 1999 by the E. Irene Boardman Foundation.

Gerald J. & Helen B. Bogen Scholarship Fund  
Est. 1984 by Helen B. and Gerald J. Bogen.

Mary Ann Bonenberger Fund for the Bethesda Nursery School  
Est. 2008 by Christin and Ben Sadwiess, Rebecca L. Paugh and Jorge Otero and other donors.

Dennis Bornick Fund  
Est. 1993 by Lydia Bornick.

Alice Botsford Fund  
Est. 2002 by bequest of Alice Botsford.

Norma M. Botti Scholarship Fund  
Est. 1997 by bequest of Norma Botti.

Botwinik-Horowitz Fund  
Est. 1972 by The Botwinik Foundation.

Grace Bourne Fund  
Est. 1984 by bequest of Grace Bourne.

Bovilsky Scholarship Fund  
Est. 2005 by the Board of Directors of LEAP.

Rob & Sandy Bowers Memorial Fund  
Est. 1996 by family and friends.

Boys & Girls Club of New Haven Endowment Fund  
Est. 2010 by the Boys & Girls Club of New Haven.

Bert Boyson Charitable Fund  
Est. 2006 by Bert Boyson.

Anna Bradley Fund  
Est. 1980 by bequest of Anna P. Bradley.

Howard Bradley Fund  
Est. 1982 by bequest of Howard Bradley.

### Mary & Charles Bradley Fund



Est. 2016 by Mary M. Bradley.

**Robert J. and Kathleen G. Bradley Fund**  
Est. 2016 by Robert J. and Kathleen G. Bradley.

Grace G. Bright Fund  
Est. 2014 by Grace G. Bright.

Henry P. Brightwell Fund  
Est. 1999 by Henry Brightwell.

William J. & Clare W. Bright Fund  
Est. 2011 by Jay Bright.

Matthew & Gladys Bliss Brinckerhoff Fund  
Est. 1982 by W. E. Bliss Charitable Foundation.

Jennie C. Bronson Fund  
Est. 1976 by bequest of Jennie C. Bronson.

Sarah Sophia Bronson Fund  
Est. 1940 by bequest of Sarah Sophia Bronson.

Alvis Brooker Memorial Scholarship Fund  
Est. 2011 by the Black and Hispanic Caucus of New Haven’s Board of Aldermen.

Charles B. Brown and Frank L. Manwaring Fund  
Est. 1970 by bequest of Madeleine E. Brown.

Kate Brown Fund  
Est. 1982 by bequest of Kate W. Brown.

Raymond Brown Fund  
Est. 1991 by Jane Brown.

“Non-partisan doesn’t mean non-participation; voting is a civic good.”

George Pillsbury, founder and now consultant to Nonprofit VOTE



COMMUNITY NOW

Funds of The Community Foundation\*continued

MORE THAN EVER

The Bundy Fund



Est. 2016 in memory of Christopher William Caldwell by friends and family.

Josephine Burgess Fund  
Est. 1981 by bequest of Josephine Burgess.

Burt Family Fund  
Est. 2010 by Mary Jane Burt.

Grace E. Busby Fund  
Est. 1962 by bequest of Grace E. Busby.

George J. Bysiewicz Scholarship Fund  
Est. 2000 by Katherine Bysiewicz.

Connecticut Association of Latinos in Higher Education Fund  
Est. 2008 by Connecticut Association of Latinos in Higher Education.

Anne Tyler Calabresi Fund  
Est. 2015 by Roslyn Milstein Meyer.

Flora Calhoun Fund  
Est. 1957 by bequest of Flora J. Calhoun.

Capers Prize Fund  
Est. 2009 by the Capers Committee.

David A. Cappelletta Scholarship Fund  
Est. 2014 by family and friends of David A. Cappelletta.

Deidre Salmona Caproni Memorial Fund for the Advancement of Literature and Arts  
Est. 2010 by Christopher Caproni.

Caroline’s Room Fund  
Est. 2006 by Gary Doyens & Jocelyn Maminta.

Allen & Liza Carroll Fund  
Est. 2006 by bequest of H. Allen Carroll.

Clare Coe Casher Memorial Fund  
Est. 2014 by the family of Clare Coe Casher.

Catalyst Fund  
Est. 1996 by many donors.

Charles Chamberlin ‘A’ Fund  
Est. 1967 by bequest of Charles G. Chamberlin.

Charles Chamberlin ‘B’ Fund  
Est. 1973 by bequest of Charles G. Chamberlin.

Chapel Haven Graduate Fund  
Est. 1984 by Chapel Haven.

Betsy Chase Fund for Docents  
Est. 1997 by Roberta Yerkes Blanshard.

Helen & Wilson Chatfield Fund  
Est. 1998 by Helen and Wilson Chatfield.

Chauncey Fellowship Fund  
Est. 2002 by Tony and Linda Sanders.

Barbara Chesler Fund  
Est. 2015 by Barbara Chesler.

John L. Chidsey Fund  
Est. 1964 by bequest of John L. Chidsey.

Etta S. Chidsey Fund  
Est. 1961 by bequest of Etta S. Chidsey.

Children In Placement Fund  
Est. 2008 by Children in Placement Inc.

Children’s Center Fund  
Est. 1987 by Children’s Center.

Christian Community Action Inc. Fund  
Est. 2008 by Christian Community Action Inc.

Lillian H. Chrostowski Fund  
Est. 1985 by friends of Lillian H. Chrostowski.

David M. Ciardiello Fund  
Est. 1983 by Peter Ciardiello.

Dominic Cinicola Fund  
Est. 2000 by bequest of Dominic Cinicola.

Civic Orchestra of New Haven Fund  
Est. 1991 by Civic Orchestra of New Haven.

A. Annette S. Clark Fund  
Est. 1997 by Annette S. Clark.

Mark & Jennifer Clayton Fund  
Est. 2006 by Mark & Jennifer Clayton.

Clifford Beers Guidance Clinic Fund  
Est. 1999 by Clifford Beers Guidance Clinic.

Edwin P. Cochran Fund  
Est. 1975 by bequest of Edwin P. Cochran.

Alice F. Cochran Fund  
Est. 1944 by bequest of Alice F. Cochran.

Lillian Coe Fund  
Est. 1991 by Sherwin and Clare Casher.

Joel Cogen Fund  
Est. 2014 by family and friends of Joel Cogen.

Community Fund for Women and Girls  
Est. 1995 by founding anonymous donor and by many donors.

Connecticut Children’s Museum Fund  
Est. 1986 by CT Children’s Museum.

Connecticut Women’s Golf Association Fund  
Est. 1991 by CT Women’s Golf Association.

Connecticut Fund for the Environment  
Est. 1994 by The Connecticut Fund for the Environment.

Edward Cooley Fund for Music  
Est. 1997 by bequest of Edward Cooley.

James W. Cooper Unrestricted Fund  
Est. 1966 by members of the New Haven Foundation Distribution Committee.

Fund for Legal Assistance Association in Memory of James W. Cooper  
Est. 1990 by New Haven Legal Assistance Association Inc.

James W. Cooper Music Fund  
Est. 1989 by bequest of James W. Cooper.

Martha & Herman Copen Fund  
Est. 2004 by Herman Copen.

Judith R. Corchard Fund  
Est. 2011 by Wright Investors’ Service Inc.

Frances Somers Cornell Fund  
Est. 1994 by Frances Somers Cornell.

Robert A. & Nancy E. Correll Fund  
Est. 1993 by Robert & Nancy Correll.

John J. Crawford Fund  
Est. 2001 by The Regional Water Authority.

Crippled Children’s Aid Society Fund  
Est. 1986 by the Crippled Children’s Aid Society.

Critical Public Health Fund  
Est. 1988 by The Community Foundation for Greater New Haven.

Susan W. and Sumner McK. Crosby Jr. Fund  
Est. 2001 by Susan W. and Sumner Crosby Jr.

David W. Cugell & Christina Enroth-Cugell Fund



Est. 2016 by David W. Cugell & Christina Enroth-Cugell

Ralph V. & Marguerite P. Currier Fund  
Est. 1979 by bequest of Ralph V. and Marguerite P. Currier.

Enos Curtin Fund  
Est. 1995 by Enos Curtin.

Anna Cutler Fund  
Est. 1957 by bequest of Anna Cutler.

Jacqueline E. D’Addio Fund  
Est. 2008 by Tracy D’Addio.

Ann & Robert Dahl Fund  
Est. 2008 by Ann & Robert Dahl.

J. Dwight & Anna E. Dana Fund  
Est. 1967 by bequests of J. Dwight and Anna E. Dana.

Maria Dana Fund  
Est. 1962 by bequest of Maria T. Dana.

Olive Louise Dann Fund  
Est. 1972 by bequest of Olive Louise Dann.

Robert B. Dannies Jr. & Priscilla S. Dannies Fund  
Est. 1997 by Priscilla S. and Robert B. Dannies.

Nettie J. Dayton Fund  
Est. 1928 by bequest of Nettie J. Dayton.

Arthur Bliss Dayton Fund  
Est. 1991 by bequest of Elinor Bliss Dayton.

Julia B. DeCapua Fund  
Est. 1996 by bequest of Julia B. DeCapua.

Ted DeLauro Scholarship Fund  
Est. 2013 by Rosa L. DeLauro.

Ted & Luisa DeLauro Community Fund  
Est. 2001 by Stanley B. Greenberg and Rosa L. DeLauro.

John A. & Edna M. DeLeon Fund  
Est. 1991 by John A. & Edna M. DeLeon.

Delta Sigma Theta New Haven Alumnae Scholarship Fund  
Est. 2006 by the New Haven Alumni Chapter of Delta Sigma Theta.

Ann Pecora Diamond Fund  
Est. 2015 by Ann Pecora Diamond.

Wilton E. Dickerman Fund  
Est. 1945 by bequest of Wilton E. Dickerman.

Dickerman Family Fund  
Est. 1982 by bequest of Wilton Dickerman.

Janet Saleh Dickson Memorial Fund  
Est. 2001 by Johanna Dickson, Emma Dickson, Angela Shashoua, Aboud Bashy, Nan Ross and Frances Clark.

Barnett Dickstein Memorial Trust Fund  
Est. 1968 by bequest of Barnett Dickstein.

The Dinsmore Family Fund  
Est. 2008 by Teddi R. Dinsmore and Kristen R. Van Alstine.

Directors Discretionary  
Est. 1980 by an anonymous donor.

Fund for the Dixwell Community House  
Est. 1992 by Dixwell Community House Inc.

Robert B. & Isabella E. Dodds Fund  
Est. 1976 by Robert B. Dodds.

Robert B. Dodds Estate Fund  
Est. 1996 by bequest of Robert B. Dodds.

Grace Donahue and Doris Feldman Fund #1  
Est. 1993 by bequest of Doris Feldman.

Grace Donahue and Doris Feldman Fund #2  
Est. 1993 by bequest of Grace Donahue.

Karen & Harold Donegan Fund  
Est. 2004 by Karen and Harold Donegan.

David Doolittle Fund  
Est. 1946 by Clarence L. Doolittle.

Clarence Doolittle Fund  
Est. 1967 by bequest of Helen R. Doolittle.

Frances C. Doolittle Fund  
Est. 2000 by bequest of Frances C. Doolittle.

Brian D’Orso Scholarship Fund  
Est. 2003 by Thomas P. and Susan M. D’Orso.

Elizabeth Doyle Memorial Scholarship Fund  
Est. 1985 by bequest of Eva C. Doyle.

East Rock Institute Endowment Fund  
Est. 2006 by East Rock Institute.

Arthur and Margaret Ebbert Memorial Fund  
Est. 1993 by bequest of Arthur Ebbert Jr.

Ecology, Environment and Alternative Energy Research Prize Fund  
Est. 2006 by an anonymous donor.

Edelweiss Fund  
Est. 2009 by anonymous donors.

John A. Edmonds Scholarship Fund  
Est. 2013 by Nancy E. Hill.

Edwin & Maye Edmonds Scholarship Fund  
Est. 2001 by Edwin R. Edmonds.

Education Fund  
Est. 1981 by The Community Foundation for Greater New Haven.

H.R. Edwards, MD Fund  
Est. 206 by bequest of Mrs. Carol K. Edwards.

Robert R. & Anita Brand Eisner Fund  
Est. 1984 by Anita Brand Eisner.

Helmer N. Ekstrom Fund  
Est. 1994 by Helmer and Joanne Ekstrom and family and friends.

Andrew Eldredge Fund  
Est. 2016 by David and Stacey Eldredge.

Zarou Manoukian Elliot Scholarship Fund  
Est. 1990 by bequest of Ralph Gregory Elliot.

Ells Family Fund  
Est. 2014 by Kristina and Theodore Ells.

Seton Elm-Ivy Awards Endowed Fund  
Est. 2000 by Fenmore and Phyllis Seton.

Louise Endel Fund  
Est. 2011 by family and friends.

Reporting on the Status of Girls, Advancing Gender-Specific Work

At its Annual Meeting in June, The Community Fund for Women & Girls convened stakeholders to hear from Dr. Andrea Bastiani Archibald, Chief Girl Expert at Girl Scouts USA. She presented a report *The State of Girls: Unfinished Business*, followed by responses from a panel of local students. In 2016 the Fund awarded \$135,000 for gender-specific work.





COMMUNITY NOW

Funds of The Community Foundation\*continued

MORE THAN EVER

Henry F. English Fund  
Est. 1946 by Henry F. English.

Philip H. English Fund  
Est. 1986 by bequest of Philip H. English.

Katharine D. English Fund  
Est. 1986 by bequest of Katherine D. English.

Richard L. English Fund  
Est. 2011 by bequest of Richard L. English.

Richard L. English Fund for Birding Activities  
Est. 2011 by bequest of Richard L. English.

Environment and Human Health Inc. Fund  
Est. 2001 by Environment and Human Health Inc.

Ercolano Astorino Fund  
Est. 2009 by Helene Robbins.

ERJ Fund  
Est. 2015 by anonymous donors as a donor advised fund.

Bernard Ettlinger Fund  
Est. 1989 by bequest of Bernard Ettlinger.

Exemplary Teacher Professional Learning Community Program of the New Haven Public Schools Fund  
Est. 2012 by Robert and Bonnie Kreitler.

Eleanor & Henry Farnam Fund  
Est. 1998 by bequest of Eleanor Farnam.

Farrel Fund  
Est. 2004 by bequest of Franklin Farrel III.

Irene E. Feltman Fund  
Est. 1995 by Irene E. Feltman.

Nathaniel K. Fenollosa Fund  
Est. 2014 by Amy Fenollosa, family and friends.

**Ellen Ferguson Memorial Fund**  
Est. 2016 by the Branford Community Foundation.

Sarah M. Ferguson Fund  
Est. 2000 by Sarah M. Ferguson.

Ruth M. Ferry Fund  
Est. 2001 by bequest of Ruth M. Ferry.

Robert S. Fers Memorial Fund  
Est. 1998 by Mary Lou Stamp.

**First Niagara Fund**  
Est. 2016 by First Niagara Bank.

**First Niagara Homeownership Fund**  
Est. 2016 by First Niagara Bank.

Renee B. Fisher Foundation Fund  
Est. 2001 by Carol Fisher and Shelley Fisher Fishkin.

Milton Fisher Scholarship Fund  
Est. 2002 by the Renee B. Fisher Foundation.

Rose M. Fisher Memorial Fund  
Est. 2003 by bequest of Robert Sherman Fisher.

FleetBoston Community Renaissance Initiative  
Est. 2000 by FleetBoston Financial Foundation.

Anne Foley Fund  
Est. 1992 by bequest of Anne Foley.

Grace Foote Fund  
Est. 1974 by bequest of Grace Salisbury Foote.

George L. Fox (Unrestricted Fund)  
Est. 1932 by bequest of George L. Fox.

Frew Family Fund  
Est. 2003 by Robert and Susan Frew.

Molly Rubin Fried Fund  
Est. 2009 by Diane and Walter Ariker.

Mary Taylor Friedler Memorial Fund  
Est. 1991 by Saul Friedler.

Friends of Boulder Knoll Fund  
Est. 2007 by Friends of Boulder Knoll.

Friends of East Rock Park Fund  
Est. 1998 by Friends of East Rock Park.

Friends of the New Haven Free Public Library Fund  
Est. 1974 by Friends of the New Haven Free Public Library.

Fund for the New Haven Green  
Est. 1987 by the Committee of the Proprietors of Common and Undivided Lands.

Gaines Family Fund  
Est. 2009 by Priscilla Gaines.

Samuel P. Gaines Fund  
Est. 1999 by Priscilla Gaines.

Murray Gallant Memorial Fund  
Est. 2001 by bequest of Murray Gallant.

Henry L. Galpin Fund  
Est. 1961 by bequest of Henry L. Galpin.

Ellen D. Galpin Fund  
Est. 1971 by bequest of Ellen D. Galpin.

Aspel and Seymour & Clara Gans Memorial Fund  
Est. 1988 by Clara Gans.

Garden Club of New Haven Fund  
Est. 1983 by Garden Club of New Haven.

Gates Fund  
Est. 1952 by bequest of Frank and Ross Gates.

Allison & Joshua Geballe Scholarship Fund  
Est. 2001 by Allison and Joshua Geballe.

General Fund, Wells Fargo Bank  
Est. 1948 by Union Trust Company.

General Fund, Bank of America  
Est. 1948 by Colonial Bank.

General Fund, Bank of America  
Est. 1948 by CT Bank & Trust.

General Fund, Bank of America  
Est. 1948 by CT National Bank.

General Fund, The Community Foundation *for* Greater New Haven Inc.  
Est. 1986 by The Community Foundation *for* Greater New Haven.

Getman Family Fund  
Est. 2000 by Mr. and Mrs. Christopher Getman.

Christopher & Toddie (Evelyn) Getman Fund  
Est. 2003 by Christopher Getman and Evelyn Q. Getman.

James & Patricia Gilbert Fund  
Est. 2005 by James & Patricia Gilbert.

Edmund K. Gilbert Fund  
Est. 1964 by bequest of Edmund K. Gilbert.

Samuel F. & Rose B. Gingold Fund  
Est. 1958 by Samuel Gingold.

Ginsberg Family Fund  
Est. 2001 by William and Kel Ginsberg.

Frederick J. Giovannini Memorial Scholarship Fund  
Est. 2013 by West Haven High School.

Girl’s Service Inc. Fund  
Est. 1979 by Girls Service of New Haven Inc.

Herman & Bess Glazer Scholarship Fund  
Est. 1979 by Herman Glazer.

GOGGA Fund  
Est. 2007 by Thomas L. & Jacquelyn M. Hutchison.

Brian & Leslie Gold Family Charitable Fund  
Est. 2008 by Brian L. and Leslie Gold.

The Goldstein Fund  
Est. 2010 by Orit Goldstein.

Joseph Goldstein Memorial Legal Assistance Fellowship Fund (The Goldstein Fellowship Fund)  
Est. 2001 by The Goldstein Fellowship Committee.

Walter Goodrich Fund  
Est. 1959 by bequest of Walter H. Goodrich.

Israel & Adele Gordon Fund  
Est. 2006 by Israel and Adele Gordon.

Winkler C. Gosch & Virginia D. Gosch Fund  
Est. 2006 by Winkler C. Gosch.

Ruth & Charles Grannick Jr. Fund  
Est. 2001 by Ruth B. Grannick.

Ulysses S. Grant Foundation Fund  
Est. 1981 by Ulysses S. Grant Foundation.

Grave Family Fund  
Est. 1987 by Richard M. Grave.

Edwin S. Greeley Fund  
Est. 1963 by bequest of Jennie E. Greeley.

Ruth W. Greenberg Fund  
Est. 1993 by bequest of Ruth W. Greenberg.

General Fund, The Community Foundation *for* Greater New Haven Inc.  
Est. 1986 by The Community Foundation *for* Greater New Haven.

Getman Family Fund  
Est. 2000 by Mr. and Mrs. Christopher Getman.

Christopher & Toddie (Evelyn) Getman Fund  
Est. 2003 by Christopher Getman and Evelyn Q. Getman.

James & Patricia Gilbert Fund  
Est. 2005 by James & Patricia Gilbert.

Edmund K. Gilbert Fund  
Est. 1964 by bequest of Edmund K. Gilbert.

Samuel F. & Rose B. Gingold Fund  
Est. 1958 by Samuel Gingold.

Ginsberg Family Fund  
Est. 2001 by William and Kel Ginsberg.

Frederick J. Giovannini Memorial Scholarship Fund  
Est. 2013 by West Haven High School.

Girl’s Service Inc. Fund  
Est. 1979 by Girls Service of New Haven Inc.

Herman & Bess Glazer Scholarship Fund  
Est. 1979 by Herman Glazer.

GOGGA Fund  
Est. 2007 by Thomas L. & Jacquelyn M. Hutchison.

Brian & Leslie Gold Family Charitable Fund  
Est. 2008 by Brian L. and Leslie Gold.

The Goldstein Fund  
Est. 2010 by Orit Goldstein.

Joseph Goldstein Memorial Legal Assistance Fellowship Fund (The Goldstein Fellowship Fund)  
Est. 2001 by The Goldstein Fellowship Committee.

Walter Goodrich Fund  
Est. 1959 by bequest of Walter H. Goodrich.

Israel & Adele Gordon Fund  
Est. 2006 by Israel and Adele Gordon.

Winkler C. Gosch & Virginia D. Gosch Fund  
Est. 2006 by Winkler C. Gosch.

Ruth & Charles Grannick Jr. Fund  
Est. 2001 by Ruth B. Grannick.

Ulysses S. Grant Foundation Fund  
Est. 1981 by Ulysses S. Grant Foundation.

Grave Family Fund  
Est. 1987 by Richard M. Grave.

Edwin S. Greeley Fund  
Est. 1963 by bequest of Jennie E. Greeley.

Ruth W. Greenberg Fund  
Est. 1993 by bequest of Ruth W. Greenberg.

“Health care is a human right and a public good.”

Frances Padilla, President, Universal Health Care Foundation of CT

Green Grass Fund for Long Wharf Theatre  
Est. 2010 by an anonymous donor.

Ernest B. Gridley Fund  
Est. 1951 by bequest of Ernest B. Gridley.

Whitney & Mary Griswold Fund  
Est. 1998 by Mary Griswold.

Griswold Homecare Fund  
Est. 2009 by Lesley Mills.

Griswold LifeTales Fund  
Est. 2001 by Lesley Mills.

Albert L. Haasis Fund  
Est. 1947 by bequest of Albert L. Haasis.

Harriet B. Hall Fund  
Est. 1958 by bequest of Harriet B. Hall.

Caroline C. Hall Fund  
Est. 1966 by William B. Hall.

Hamden Library Gift Fund  
Est. 1982 by the Hamden Library.

Henry A. Hamel Fund  
Est. 1997 by bequest of Henry A. Hamel.

Senator Lucy T. Hammer Scholarship Fund  
Est. 2001 by memorial gifts.

Albert Hamowitz Fund  
Est. 1995 by Albert Hamowitz.

Hannah’s Dream Endowment Fund  
Est. 2000 by Chris and Karen Kristan, New Haven Board of Park Commissioners, and Easter Seals Goodwill Industries Rehabilitation Center Inc.

Henry S. Harrison Fund  
Est. 1986 by Henry S. Harrison.

Harvey Fund  
Est. 1965 by Elizabeth K. Harvey.

Elizabeth Kingsley Harvey Fund  
Est. 2009 by bequest of Elizabeth K. Harvey.

Katharine Farnam Harvey Fund  
Est. 1969 by bequest of Katharine Farnam Harvey.

Haven Fund  
Est. 2013 by Harry Solomon.

Haven Fund II  
Est. 2013 by Harry Solomon.

Health Services Fund  
Est. 1979 by bequest of Grace E. Marvin.

Healthy Start/Male Involvement Endowment Fund  
Est. 2004 by many donors.

Louis L. Hemingway Fund  
Est. 1972 by gifts from family and friends.

Yandell Henderson Fund  
Est. 1945 by bequest of Yandell Henderson.

Hereld Fund  
Est. 2011 by Peter Hereld.

Eleanor M. Herpich Fund  
Est. 2011 by bequest of Eleanor M. Herpich.

Higher Heights Youth Empowerment Programs Fund  
Est. 2008 by Higher Heights Youth Empowerment Programs Inc.

Deborah A. Highsmith Memorial Scholarship Fund  
Est. 1991 by Carlton Highsmith.

Howard K. Hill Fund  
Est. 2013 by Howard K. Hill.

Hillhouse Alumni Scholarship Fund  
Est. 1993 by Mark Shafer.

Muriel Hirshfield Scholarship Fund  
Est. 1963 by Jack Hirshfield.

Historic Structures Fund  
Est. 1985 by Historic Structures Unlimited Inc.

Florence A. Hoadley Fund  
Est. 1970 by bequest of Florence A. Hoadley.

John Elwyn Hobbs Fund  
Est. 1971 by bequest of Harriet C. Hobbs.

William & Barbara Hoblitzelle  
Est. 1987 by bequest of William E. and Barbara B. Hoblitzelle.

Hoblitzelle Family Fund III  
Est. 1990 by bequest of William E. and Barbara B. Hoblitzelle.

Hodgson/Leventhal Fund  
Est. 1990 by Beverly Hodgson and John Leventhal.

James W. Hodson Family Fund  
Est. 1973 by the James W. Hodson Charitable Foundation.

Nathan and Ellen Holbrook  
Est. 1960 by bequest of Henrietta S. Holbrook.

Elizabeth R. Hooker Fund  
Est. 1959 by Elizabeth R. Hooker.



### Helping Them Become Their Best Selves

St. Martin de Porres Academy opened its doors 12 years ago with the promise of giving life-changing opportunities to youth. The Community Foundation *for* Greater New Haven has had a 10-year history of financial support.



COMMUNITY NOW

Funds of The Community Foundation\*continued

MORE THAN EVER

Clarence R. Hooker Fund  
Est. 1945 by bequest of Clarence R. Hooker.

Richard Hooker Fund  
Est. 2000 by Mildred Hooker.

Julia S. Horner Fund  
Est. 1928 by bequest of Leonard S. Horner.

Nancy I. Hoskins Fund  
Est. 2011 by Anne Emmet.

Connecticut Hospice Fund  
Est. 1978 by Connecticut Hospice Inc.

Harry S. Huggins Memorial Scholarship Fund  
Est. 1998 by Marcie, Herbert and Mariam Setlow.

Hulbert Family Fund  
Est. 2014 by Carolyn H. Cary.

Anna & Argall Hull Fund  
Est. 1975 by bequest of Argall L. and Anna G. Hull.

John L. & Pauline E. Huwiler Memorial Fund  
Est. 1997 by Paul F. & Joan T. Huwiler.

Imperato Family Scholarship Fund  
Est. 2003 by Eugene Imperato.

Inglis Family Fund  
Est. 2004 by Michele Inglis.

William Brinckerhoff Jackson Memorial Fund  
Est. 1982 by bequest of Rose Herrick Jackson.

John Herrick Jackson Fund  
Est. 1951 by bequest of John Herrick Jackson.

John H. & William B. Jackson Memorial Fund  
Est. 1959 by John Day Jackson.

John Day Jackson Fund  
Est. 1961 by an anonymous donor.

Richard Seymour Jackson Fund  
Est. 1974 by the Register Publishing Company.

Rose H. Jackson Memorial Fund  
Est. 1977 by Mrs. William B. Reese and Mrs. Rose Jackson Sheppard.

John D. Jackson Memorial Fund  
Est. 1961 by the Register Publishing Company.

Burton & Susan Jaynes Fund  
Est. 2007 by Susan and Burton Jaynes.

Benjamin Jepson School Fund  
Est. 2006 by David P. and Kristen A. Bechtel.

Birgitta W. Johnson Fund  
Est. 2013 by bequest of Birgitta W. Johnson.

Birgitta Johnson Campership Fund  
Est. 2014 by Fellowship Place.

Estelle A. Johnson Fund  
Est. 1962 by bequest of Estelle A. Johnson.

Elsa T. Johnson Fund  
Est. 1993 by Kerala Johnson Snyder.

Harry H. Johnson Fund  
Est. 2000 by Barbara Dahl and Kevin McCarthy.

Henry S. Johnson Fund  
Est. 1995 by Henry S. Johnson.

Henry S. Johnson Trust Fund  
Est. 1997 by Henry S. Johnson.

Oscar W. Johnson Sr. Fund  
Est. 1998 by Oscar W. Johnson Sr. Foundation.

Daniel L. Jones Fund  
Est. 1988 by Helen W. Jones.

Helen W. Jones Fund  
Est. 2011 by bequest of Helen W. Jones.

Lulu & William Jones Fund  
Est. 1986 by Lulu B. Jones.

Carol and James Kasper Fund  
Est. 2009 by James Kasper.

Kelley Memorial Fund  
Est. 2004 by Brooks M. and Suzanne Kelley.

Kelley Family Fund  
Est. 2014 by the Stonebridge Foundation.

Jean R. Kelley Fund  
Est. 1997 by Jean R. Kelley.

Carolyn Kellogg Memorial Fund  
Est. 1955 by gifts in memory of Carolyn Kellogg.

Mildred A. Kelly Fund  
Est. 1966 by bequest of Mildred A. Kelly.

**Frank Kenna Jr. Fund**  
Est. 2016 by the Frank Kenna Trust.

Gilbert T. Kenna Fund  
Est. 2009 by bequest of Gilbert T. Kenna.

Harry B. Kennedy & Ann H. Kennedy Fund  
Est. 2001 by Ann H. Kennedy.

Henry Morgan Keyes Fund  
Est. 2004 by Henry Morgan Keyes.

Helen & Morgan Keyes and Eunice Keyes Medlyn Fund  
Est. 2003 by Helen and H. Morgan Keyes and Eunice Keyes Medlyn.

Beverly Hilton Kimbro Scholarship Fund  
Est. 2007 by Warren Kimbro.

F. Kirschner Fund  
Est. 1942 by bequest of Fannie H. Kirschner.

Lucy M. Kittredge Fund  
Est. 1970 by bequest of Lucy M. Kittredge.

Kiwanis Club Fund  
Est. 1985 by the Kiwanis Club of New Haven.

Karen E. Knudsen Memorial Fund  
Est. 2001 by M. J. Knudsen.

Lillian & Henry A. Konopacke Fund  
Est. 2013 by bequest of Henry A. Konopacke.

Edward Konowitz Family Fund  
Est. 2007 by Edward Konowitz.

David A. Krett Jr. Fund  
Est. 2012 by David A. Krett Jr.

Mr. & Mrs. Lester A. Kuss Fund  
Est. 1999 by Mrs. Lester A. Kuss.

Landes Memorial Fund for the Arts  
Est. 2006 by anonymous donors.

David T. Langrock Old Masters Art Fund  
Est. 1982 by the David T. Langrock Foundation.

Anna K. & Louis Lapides Fund  
Est. 1991 by bequest of Anna K. Lapides.

John Laslett Fund  
Est. 1971 by bequest of John Laslett.

Sara Lavery Fund  
Est. 1971 by bequest of Sally Brown Bradley.

Thomas & Elizabeth Lazay Charitable Fund  
Est. 2007 by Thomas J. & Elizabeth V. Lazay.

Anne & Steven Lazrove Fund  
Est. 1993 by Anne & Steven Lazrove.

Stanley A. and Margaret R. Leavy Fund  
Est. 1996 by Stanley A. Leavy.

Wilson H. Lee Fund  
Est. 1950 by bequest of Wilson H. Lee.

Lee Scholarship Fund  
Est. 1999 by Marietta and Leighton Lee, II and the Lee family.

Catherine Kennedy Foundation for Leeway Fund  
Est. 1998 by Leeway Inc.

Marvin Lender Scholarship Fund  
Est. 1991 by Marvin and Helaine Lender.

Martha F. Leonard Fund  
Est. 2006 by bequest of Martha F. Leonard.

Letters for My Children Fund  
Est. 2001 by Russel H. Goddard.

**Diane and Burton Levey Family Fund**



Est. 2016 by their children Patricia Levey Lebow and John Levey.

Selma M. Levine Fund  
Est. 1977 by bequest of Selma M. Levine.

Susan M. Lewin Women’s Leadership Fund  
Est. 2013 by Lesley Mills and other donors.

Helen M. Leyerzapf Fund  
Est. 1978 by bequest of Helen M. Leyerzapf.

Life Haven Fund  
Est. 2009 by Life Haven Inc.

Ruth C. Lindwall Fund  
Est. 1988 by Ruth C. Lindwall.

Elsa Guttman Links and Leo Links Fund  
Est. 1982 by bequest of Elsa G. and Leo Links.

Elsa Guttman and Leo Links Scholarship Fund  
Est. 1983 by bequest of Elsa G. and Leo Links.

Beatrice Shapiro Lipsher Fund  
Est. 1990 by gift from Tyler Cooper & Alcorn.

Judith A. Lisi Fund  
Est. 1992 by the Connecticut Association for the Performing Arts.

Benjamin D. Liveten Fund  
Est. 2002 by bequest of Benjamin D. Liveten.

Mary G. & Isaac S. Liveten Fund  
Est. 1990 by Benjamin D. Liveten.

John & Margaret Loehr Family Fund  
Est. 2007 by John and Margaret Loehr.

Charles Long & Roe Curtis Family Fund  
Est. 2011 by Charles Long and Roe Curtis.

Long Wharf Future Fund  
Est. 1982 by gifts to Long Wharf Campaign.

Lord/Kubler Fund “A” for New Work at Long Wharf Theatre  
Est. 2014 by the Seedlings Foundation.

Frances L. Loro Hamden High School Scholarship  
Est. 2000 by bequest of Frances L. Loro.

Jean Lovell Fund  
Est. 1994 by New Haven Scholarship Fund Inc.

Stuart M. Low Fund  
Est. 1999 by Stuart M. Low.

**Lowery Family Scholarship Fund**



Est. 2016 by Mary F. Lowery.

Luongo Family Charitable Fund  
Est. 2006 by John A. Luongo and Doris Luongo.

John, Cecilia & Susan Lyons Fund  
Est. 1986 by John and Cecilia Lyons.

Frederick Machlin Memorial Fund  
Est. 1975 by memorial gifts from the Armstrong Rubber Company.

Margaret B. Mack Fund  
Est. 1995 by bequest of Margaret B. Mack.

Madison Surf Club Inc. Fund  
Est. 1967 by the Madison Surf Club Inc.

Maiberger Family Fund  
Est. 2007 by Richard & Annette Maiberger.

Mailhouse Family Fund  
Est. 1991 by Robert and Joyce Mailhouse.

Walter E. & Anna L. Malley Fund  
Est. 1942 by Walter E. Malley.

Anna L. Malley Recreational Fund  
Est. 1943 by Walter E. Malley.

Janet Marlin Fund  
Est. 1971 by bequest of Janet Marlin.

Claire M. Maroney Fund  
Est. 2006 by bequest of Claire M. Maroney.

Zachary and Laura Martinez Fund  
Est. 2013 by Zachary and Laura Martinez.

Marian Ambrulevich Martone Memorial Scholarship Fund  
Est. 2006 by Marian F. Martone.

Martin-Pescatore Family Fund  
Est. 2003 by Anne Martin and John Pescatore.

Vincent P. Martone Memorial Scholarship Fund  
Est. 2012 by Marian F. Martone.

John S. Martinez and Family Scholarship Fund  
Est. 2003 by Ariel Martinez.

John M. & Adella S. Marvin Fund  
Est. 1979 by bequest of Grace E. Marvin.

Amy Linton Mather — West Haven Pound Pals Inc. Fund  
Est. 2002 by Judy Rettig and Christine Santoro.

M. Anne & Jean B. Mauro Fund  
Est. 1998 by Anne and Jean B. Mauro.

New Haven Mayor’s Fund for Youth and Seniors  
Est. 2014 by Mayor Toni Harp.

McMahon Family Fund  
Est. 1991 by Mary I. Smith.

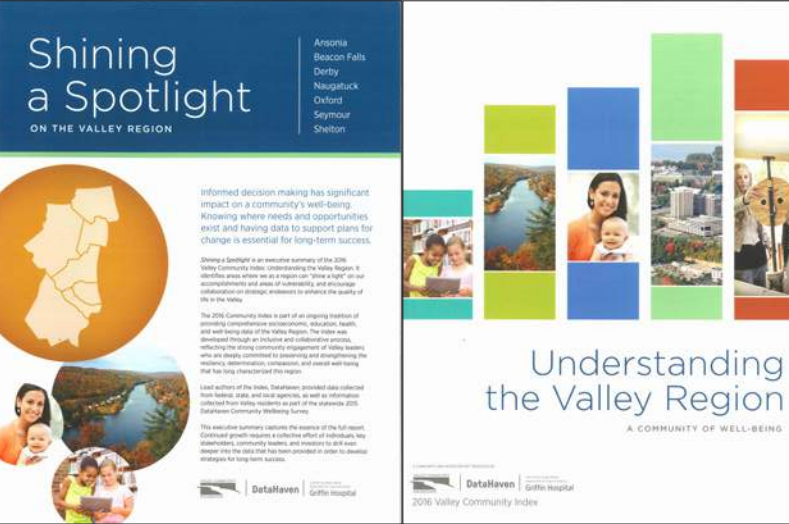
McNerney Witek Family Fund  
Est. 1997 by Helen McNerney.

Esther E. Mead Fund  
Est. 1983 by bequest of Esther E. Mead.

Eunice Keyes Medlyn Fund  
Est. 2003 by Eunice Keyes Medlyn.

## Making Strides to Build an Informed Community

The Valley Community Foundation (VCF) with 30 partner organizations released *Understanding The Valley Region* in 2016, along with an executive summary of Valley needs and opportunities. This community-level data will be used to convene conversations, align efforts and investments, and collaborate on strategic endeavors to build, sustain and enhance the quality of life in the Valley. The Foundation works with VCF to build impactful community philanthropy in the Valley.





COMMUNITY NOW

Funds of The Community Foundation\*continued

MORE THAN EVER

Peter J. Meehan and Prudence F. Meehan Fund  
Est. 2013 by Peter J. and Prudence F. Meehan.

Parviz and Bahijeh Mehri Fund  
Est. 1993 by Cyrus Mehri.

Ruth A. Meier Fund  
Est. 1989 by bequest of Allen S. Meier.

Alice Pack Melly Fund  
Est. 2007 by Alice P. Melly.

Anna H. Merwin Fund  
Est. 1962 by bequest of Anna H. Merwin.

Jerome & Roslyn Milstein Meyer Family Fund  
Est. 2001 by Jerome and Roslyn Milstein Meyer.

Jerome H. Meyer Education Fund  
for Long Wharf Theatre  
Est. 2015 by Long Wharf Theatre.

Milstein Meyer Fund for  
Long Wharf Theatre Endowment  
Est. 2008 by Jerome and  
Roslyn Milstein Meyer.

Roslyn Milstein Meyer  
Women In Transition Fund  
Est. 2014 by gifts of friends.

Daniel & Judith Miglio Fund  
Est. 2008 by Daniel and Judith Miglio.

Milford Academy Endowment Fund  
Est. 1998 by many donors.

Louise Miller Fund  
Est. 2014 by Randall Miller and Scott Miller.

Dr. Tammis Sholin Miller Scholarship Fund  
Est. 1995 by the estate of Dr. Tammis Sholin  
Miller and gifts of family and friends.

Paul Millette Memorial Scholarship Fund  
Est. 1987 by Lenore and Francis Millette.

Dorothy M. Mills Fund  
Est. 1969 by Dorothy M. Mills.

Mary B. Mitchell Fund  
Est. 1966 by bequest of Mary B. Mitchell.

Francis J. Mitchell Fund  
Est. 1967 by bequest of Francis J. Mitchell Jr.

George W. Mixer Fund  
Est. 1977 by bequest of George W. Mixer.

Arthur E. Moore III Memorial Scholarship Fund  
Est. 1989 by Beverly Kimbro and gifts from  
family and friends.

Charles G. Morris Fund  
Est. 1970 by the Friends of Boys Inc.

Johnnie Mouning Memorial Scholarship Fund  
Est. 2008 by George Richard II.

**Bryant and Sara Munson Fund**  
Est. 2016 by Bryant and Sara Munson.

Kathryn Murray-Phyllis McDowell Family Fund  
Est. 1995 by Phyllis McDowell.

Murtha Cullina LLP Scholarship Fund  
Est. 1999 by Murtha Cullina LLP.

Music Inspiring Youth Fund  
Est. 2013 by Lindsay May and Philip Kirsch.

My Brothers Heart — The Joshua French  
Memorial Foundation Fund  
Est. 2010 by Rebekah Horn.

Ruth I. Myers Fund  
Est. 1961 by bequest of Ruth I. Myers.

NAACP Haitian Fund  
Est. 2010 by the Greater New Haven NAACP.

Arthur and Ruth Nabstedt Fund  
Est. 1975 by bequest of Arthur T. Nabstedt.

Susan J. Bryson & Laurence P. Nadel Fund  
Est. 2002 by Susan J. Bryson &  
Laurence P. Nadel.

Carol DiBenedetto Nardini Fund  
Est. 2000 by Carol Nardini.

Father Howard Nash Memorial Fund  
Est. 2002 by Robert Mantilla.

Neighborhood Endowment Fund  
Est. 1992 by The Community Foundation  
for Greater New Haven.

Neighborhood Music School  
Dr. Regina M. Lily Warner Fund  
Est. 2008 by Neighborhood Music School.

Thomas Nesbit Jr. and Anna C. Nesbit Fund  
Est. 2014 by bequest of Thomas Nesbit Jr. and  
Anna C. Nesbit.

Netter/Boone Family Fund  
Est. 2004 by Ronald and Susan Netter.

Mildred E. Neumann  
Memorial Scholarship Fund  
Est. 2000 by Miss Emma Neumann.

NewAlliance Bank Scholarship Fund  
Est. 1989 by New Haven Savings Bank,  
now First Niagara Bank.

NewAlliance Bank Education Fund  
Est. 1989 by New Haven Savings Bank,  
now First Niagara Bank.

New Haven Bread Fund  
Est. 1980 by First Church of Christ,  
Trinity Church on the Green,  
Dawson Bread Fund.

New Haven Foundation Fund  
Est. 1981 by The New Haven Foundation.

New Haven Network Public Education Fund  
Est. 1986 by School Volunteers for  
New Haven Inc.

New Haven Paint & Clay Club Fund  
Est. 1982 by New Haven Paint & Clay Club Inc.

New Haven Real Estate Educational  
Foundation Fund  
Est. 1987 by the New Haven Real Estate  
Educational Foundation.

New Haven Scholarship Fund  
Est. 1988 by New Haven Scholarship Fund Inc.

New Haven Symphony Orchestra Fund  
Est. 1999 by New Haven Symphony  
Orchestra Inc.

New Haven Teachers Fund  
Est. 2012 by New Haven Investment Fund.

Newton Family Fund  
Est. 2010 by David I. Newton.

New Ways Fund  
Est. 2009 by Charles Pillsbury.

North Haven High School Excellence  
in Music Fund  
Est. 2013 by anonymous donors.

Donald H. & Frances M. Nugent Fund  
Est. 1993 by Frances M. Nugent.

Arthur M. O’Brasky Scholarship Fund  
Est. 1993 by bequest of Arthur and  
Annette O’Brasky.

Sara Elizabeth O’Connor Fund  
Est. 2003 by Peter and Elizabeth Demir.

Nicholas D. Ohly & Sara Huntington Ohly Fund  
Est. 2008 by the bequest of Nicholas D. Ohly.

Oliver & Nelson Family Fund  
Est. 2008 by Sara O. Nelson.

John J. Opalinski Jr.  
Memorial Scholarship Fund  
Est. 1995 by bequest of John J. Opalinski Jr.

Ophelia Fund  
Est.1986 by Flora J. Calhoun.

Henry C. Oppen Fund  
Est. 2003 by bequest of Henry C. Oppen.

Optimates Society Fund  
Est. 2013 by Matthew Medearis.

Orchestra New England Music Director and  
Sponsorship Endowment Fund  
Est. 1998 by Anne and Jean B. Mauro.

Ruth L. Osterweis Fund  
Est. 1983 by memorial gifts from family.

Outer Island Fund for Education and Research  
Est. 2003 by bequest of Elizabeth Hird.

Oxford Education Fund  
Est. 1996 by bequest of an anonymous donor.

Helen L. Palmer ‘Spirit of the Foundation’ Fund  
Est. 2005 by The Community Foundation  
for Greater New Haven.

Paula and Michael Panik  
Arts and Education Fund  
Est. 2009 by Michael and Pauline Panik.

Mary Jane and Ciro Paoletta Fund  
Est. 1987 by Philip Paoletta.

Cynthia M. Parker Fund  
Est. 2012 by Cynthia M. Parker.

Charles J. Parker Memorial Fund  
Est. 1980 by Elise O. Parker.

Partnership for Aging Fund  
Est. 1999 by several nonprofits  
serving the elderly.

The Partnership for Youth Fund  
Est. 1997 by an anonymous donor.

Partyka Family Fund  
Est. 1996 by Mildred Partyka.

Elisa D. Pasqualoni Memorial Fund  
Est. 1999 by Fred Pasqualoni.

**PATH Fund**  
Est. 2016 by Maysa Akbar.

Peace & Social Justice Fund  
Est. 2008 by Joy Gordon.

H. Pearce Family Scholarship Fund  
Est. 1999 by Herbert H. Pearce.

Pearce-Fleming Family Fund  
Est. 2006 by Barbara Pearce  
and Norman Fleming.

Sara G. Peck Fund  
Est. 1999 by bequest of Sara G. Peck.

Rose V. Pelliccia Fund  
Est. 1978 by bequest of Rose V. Pelliccia.

People’s Bank Fund  
Est. 1984 by People’s Bank.

Maria Baez Perez Scholarship Fund  
Est. 2004 by the Ted and Luisa DeLauro  
Community Fund.

James Perillo Education Fund  
Est. 2014 by the Board of The  
Community Foundation for Greater  
New Haven and other donors.

Simon Persky Fund  
Est. 1963 by bequest of Simon Persky.

Edward L. Peters Memorial Scholarship Fund  
Est. 2000 by John F. Peters.

Catherine P. and Edward Petraiulo Jr. Fund  
Est. 2009 by Catherine P. and Edward  
Petraiulo Jr.

John P. & Cora E. Phelps Fund  
Est. 1962 by bequest of Emma P. Pelton.

Barnet & Sharon Phillips Charitable Fund  
Est. 2004 by Barnet & Sharon Phillips.

Dorothy Pickop Fund  
Est. 1994 by bequest of Dorothy Pickop.

Mildred P. and Henry H. Pierce Jr. Fund  
Est. 2002 by Katherine C. Pierce.

Laetitia V. Pierson Fund  
Est. 1993 by bequest of Laetitia V. Pierson.

Pikaart-Vaughan Family Fund  
Est. 2002 by Edward and Margaret Pikaart.

Mettie B. Platt Fund  
Est. 1957 by bequest of Mettie B. Platt.

New Haven Police Fund  
Est. 2014 by LH Brenner Inc.

Glenn J. Pollard Community Fund  
Est. 2011 by Jared Pollard and family.

Philip Pond Fund  
Est. 1964 by bequest of Philip Pond.

Mildred Pond Fund  
Est. 1998 by bequest of Mildred Pond.

Helen S. Porter Fund  
Est. 1962 by bequest of Helen S. Porter.

Gillen Powers Family Fund  
Est. 2015 by Angela and William Powers.

David G. Powrie Fund  
Est. 2013 by David G. Powrie.

David G. Powrie Fund #2  
Established in 2015 by bequest of David  
G. Powrie as a designated fund for several  
organizations that were important to Powrie.

Progreso Latino Fund  
Est. 2003 by Frances and John Padilla.

Promising Scholars Fund  
Est. 2007 by the Board of the  
Promising Scholars Fund.

Shirley Martin Prown Fund  
Est. 2000 by the Friends of  
Case Memorial Library.

Bob Pryde Scholarship Fund  
Est. 1976 by bequest of Dorothy M. Pryde.

Dorothy M. Pryde Fund  
Est. 1976 by bequest of Dorothy M. Pryde.

Dorothy M. Pryde Scholarship Fund  
Est. 1976 by bequest of Dorothy M. Pryde.

Mary W. Pryde Fund  
Est. 1976 by bequest of Dorothy M. Pryde.

Mary W. Pryde Scholarship Fund  
Est. 1976 by bequest of Dorothy M. Pryde.

Mary W. and Robert D. Pryde Library Fund  
Est. 1976 by bequest of Dorothy M. Pryde.

Robert D. Pryde Fund  
Est. 1976 by bequest of Dorothy M. Pryde.

Robert D. Pryde Scholarship Fund  
Est. 1976 by bequest of Dorothy M. Pryde.

Puddicombe Fund  
Est. 2015 by Frances Puddicombe.

**Push Fund**  
Est. 2016 by Eugénie and Bradford Gentry.

Quinnipiac River Fund  
Est. 1990 by settlement between the National  
Resources Defense Council, Connecticut Fund  
for the Environment, and Upjohn Corporation.

Donald Baker Quint Memorial Fund  
Est. 1996 by Bernice and Raymond Quint.



### Building Resources for Our Community

Nearly \$1.3 Million was raised for a broad range of organizations working in The Foundation’s 20-town service area during The Great Give® 2017. Grand Prizes were won by organizations providing land preservation, services to refugees and immigrants, and programs that engage youth. To local nonprofits facing budget cuts and challenges from national policy changes, the event was very important.

A list of GreatGive donors is available at [cfgnh.org](http://cfgnh.org) and [giveGreater.org](http://giveGreater.org)®.



# COMMUNITY NOW

## Funds of The Community Foundation\*

continued

Richard A. Rathbone Memorial Fund  
Est. 1989 by Mrs. Richard A. Rathbone.

Arthur Ratner Scholarship Fund  
Est. 2012 by family, friends and classmates.

Edith P. Rausch Fund  
Est. 1993 by bequest of Edith P. Rausch.

Rayford Cafferty Fund  
Est. 2002 by Laura Freebairn-Smith,  
Brett Rayford and other donors.

Read Revolution College Book Fund  
Est. 2010 by Marc Michaelson  
and other donors.

Read To Grow Fund  
Est. 1998 by Roxanne and Kevin Coady  
and other donors.

Harriet M. Redfield  
Est. 1950 by bequest of Harriet M. Redfield.

Refugee Reunification Project Fund  
Est. 2005 by Amanda Edmonds, Abja Midha,  
Elora Mukherjee and Vivek Sriram.

Rehabilitation Center Fund  
Est. 1983 by the Rehabilitation Center.

Mary A. & Robert S. Reigeluth Fund  
Est. 1991 by Mr. and Mrs. Robert S. Reigeluth.

Marion Cullen Reilly Scholarship Fund  
Est. 2004 by Maureen Reilly.

Maureen A. Reilly Fund  
Est. 2004 by bequest of Maureen A. Reilly.

Pamela & Ronald Reis Family Fund  
Est. 1981 by Ronald & Pamela Reis.

Resch Family Fund  
Est. 2004 by Paula and Richard Resch.

Responsible Parenting Fund Honoring  
Robert G. LaCamera, MD  
Est. 1998 by family, friends and colleagues of  
Dr. Robert G. LaCamera.

Mary Jane Reynolds Fund  
Est. 1996 by bequest of Mary Jane Reynolds.

Frank Rice Memorial Fund  
Est. 1985 by bequest of Frank Rice.

Florence Rice Fund  
Est. 2014 by bequest of Florence Rice.

Richardson Charitable Fund  
Est. 2007 by Paul G. & Joan W. Richardson.

Pauline & Frank Richard Fund  
Est. 1992 by Pauline Richard.

Rike Fund  
Est. 1978 by Lawrence M. Noble Jr.

’r kids Family Center  
Est. 2011 by an anonymous donor.

Constance Robert Fund  
Est. 2008 by Paul E. Robert.

Rebecca Satterlee Robbins Scholarship Fund  
Est. 1996 by Lt. Col. Gerald Robbins.

Nathanael V. Robert Fund  
Est. 2009 by Clare and Patrick Robert.

Helen H. Roberts Fund  
Est. 1952 by Helen H. Roberts.

Joseph H. and Barbara R. Roberts Fund  
Est. 1996 by bequest of Joseph H. Roberts.

Caroline V. Robertson Fund  
Est. 1987 by bequest of Caroline V. Robertson.

Jean-Michel Robert Fund  
Est. 2008 by Elisabeth B. Robert.

Babette Rogol Scholarship Fund  
Est. 1993 by the Babette Rogol Scholarship Inc.

**Rhonna and Brian Rogol Fund**  
Est. 2016 by Rhonna and Brian Rogol.

Frederick Talmadge and Mary Ogden Rolfe  
Est. 1961 by bequest of Clarence E. Rolfe.

Jared Rosner Memorial Fund  
Est. 2008 by J. Patrick Carley III &  
Pio A. Imperati.

Margaret M. Rowland Fund  
Est. 1959 by Daisy MacDonald.

Rozett Family Fund  
Est. 2015 by Jean and Ronald Rozett.

Ruggiero “Forever In The Light” Fund  
Est. 2005 by Sal Annunziato.

Joseph Ruggiero Scholarship Fund  
Est. 2012 by bequest of Joseph B. Ruggiero.

Marion M. Russell Fund  
Est. 2013 by Marion M. Russell.

Sacco Family Fund  
Est. 1996 by Carol & Humbert V. Sacco Jr.

Sage Services of Connecticut Fund  
Est. 1983 by Sage Services of CT.

Saint Ambrose Music Club Fund  
Est. 1983 by the Saint Ambrose Music Club.

Sarah Alison Shufro Mandelkern Fund  
 (“Sarah’s Fund”)  
Est. 2001 by Cathy Fran Shufro.

Gustave R. Sattig Fund  
Est. 1951 by bequest of Gustave R. Sattig.

Ilene M. Saulsbury Fund  
Est. 2005 by Ilene M. Saulsbury.

Curtis M. Saulsbury Scholarship Fund  
Est. 2001 by Robert H. Saulsbury Jr.

Grace P. Scalese Award Fund  
Est. 1999 by Fred J. Pasqualoni.

David R. Schaefer and Janet C. Hall Fund  
Est. 2014 by Janet C. Hall and David R. Schaefer.

Lewis G. Schaeneman Jr. Foundation Inc. Fund  
Est. 2012 by the Lewis Schaeneman Jr.  
Foundation.

Jennifer L. Schiff Charitable Fund  
Est. 2005 by Jennifer L. Schiff.

Peter & Judith Schurman Fund  
Est. 1984 by Peter and Judith Schurman.

Reva Barez Schwartz Fund  
Est. 2003 by Reva Barez Schwartz.

Samuel & Aramina Schwartz Fund  
Est. 1954 by Samuel Schwartz.

Cornell Scott Scholarship Fund  
Est. 2003 by the Advisory Committee.

Seedlings Fund for the  
Long Wharf Theatre Endowment  
Est. 2008 by the Seedlings Foundation.

Phyllis Z. Seton Fund  
Est. 2015 by Diana Seton Wakerley.

Phyllis Z. Seton Children’s Endowment Fund  
for Edgerton Park Conservancy  
Est. 2003 by Fenmore R. and Phyllis Z. Seton.

George D. Seymour Fund  
Est. 1945 by bequest of George D. Seymour.

William R. Shaffer Fund  
Est. 1975 by bequest of William R. Shaffer.

Jane Steidley Shaw Fund  
Est. 2009 by Jane A. Shaw.

Cherry Shaw Swords &  
Virginia Thorne Shaw Fund  
Est. 2014 by Susan Stevens.

Jane Shepard Fund  
Est. 1965 by bequest of Jane P. H. Shepard.

Brooks Shepard Jr. Fund  
Est. 1990 by Brooks Shepard Jr.

Charles R. S. Shepard & Derry Ann Moritz Fund  
Est. 1994 by Charles R. S. Shepard and  
Derry Ann Moritz.

Sherry Fund  
Est. 2004 by bequest of William Sherry.

Herman E., Clara G. & Helene M. Shincel Fund  
Est. 2001 by bequest of Helen M. Shincel.

**David W. Short Music Scholarship Fund**  
Est. 2016 by Kelly Short.

Shubert Performing Arts Center Fund  
Est. 1986 by Shubert Performing Arts Center.

Caroline Silverthau Fund  
Est. 1942 by bequest of Caroline Silverthau.

Martha H. Simpkin Fund  
Est. 1971 by bequest of Martha H. Simpkin.

Louis & Joan M. Sirico Fund  
Est. 2010 by Teresa M. Sirico.

Gustave & Carol Lynn Sirot Scholarship Fund  
Est. 1999 by Carol Lynn Sirot.

Gustave & Carol Sirot Family Fund  
Est. 2011 by Carol Sirot.

Margaret G. Sisk Fund  
Est. 2014 by bequest of Margaret G. Sisk.

**Sidney Skolnick Fund**  
Est. 2016 by Sidney Skolnick.

Ella E. Smith Fund  
Est. 1959 by bequest of Ella E. Smith.

Maude Smith Fund  
Est. 1967 by bequest of Maude S. Smith.

May C. Smith Fund  
Est. 1996 by Rosemary Little.

David A. & Claire O. Smith Family Fund  
Est. 2003 by David A. & Claire O. Smith.

Donald E. Smith Memorial Scholarship Fund  
Est. 2013 by bequest of Donald E. Smith.

Kerala and Richard Snyder Fund  
Est. 2014 by Kerala and Richard Snyder.

Social Services Fund  
Est. 1970 by The Community Foundation  
for Greater New Haven.

**The Pedro Soto & Sara Jamison  
Family Fund**  
Est. 2016 by Pedro Soto and Sara Jamison.

**Viola J. Spinelli Fund**  
Est. 2016 by Viola J. Spinelli.

Blanche Spinner Outdoor Recreation Fund  
Est. 1994 by the Citizens Park Council of  
Greater New Haven.

Margaret M. Sprick Fund  
Est. 1997 by bequest of  
Margaret Morton Sprick.

R. Edwin and Alpha M. Steele Fund  
Est. 2001 by R. Edwin and Alpha M. Steele.

Joan A. Steitz Fund  
Est. 2008 by Joan A. and Thomas Steitz.

Stepping Stones Milestone Fund  
Est. 2010 by anonymous donors.

Joseph C. Stevens Fund  
Est. 2014 by bequest of Joseph C. Stevens.

Eva-Marie Pfeiffer Stinson Memorial Fund  
Est. 2000 by Helen C. Pfeiffer.

Douglas & Patti Stitzel  
Memorial Scholarship Fund  
for Hamden High School  
Est. 2002 by Milton & Dorothy Stitzel.

Louis and Susan Stone Family Fund  
Est. 2015 by Susan Stone.

Stonebridge Fund  
Est. 2014 by the Stonebridge Foundation.

Lisl Karen Streett Fund  
Est. 1989 by Grace Cornell Terwilliger &  
Dr. J. Walter Streett.

E. Laura Stuart Scholarship Fund  
Est. 2006 by A. Walter and Sharyn A. Esdaile.

Kathleen A. Sullivan Fund  
Est. 2004 by Stephen C. Robinson  
and other donors.

Sullivan Family Fund  
Est. 2008 by Carla & Sean Sullivan

Henri Sumner Scholarship Fund  
Est. 2015 by the New Haven Public School  
Foundation.

Sunshine Fund  
Est. 2005 by the Sunshine Donor.

Philip Scott Taksen Memorial Charity Fund  
Est. 2005 by Michelle Taksen.

William Henry Taylor Fund  
Est. 2009 by Priscilla Taylor.

Naomi Law Terrell Foundation Fund  
Est. 2006 by bequest of Naomi Law Terrell.

Charles L. Terrell/New Haven Savings Bank  
Scholarship Fund  
Est. 2001 by New Haven Savings Bank.

Bertha M. and Emanuel H. Thalheimer Fund  
Est. 1963 by bequest of Emanuel H. Thalheimer.

Edna May and Richard M. Thalheimer Fund  
Est. 1970 by bequest of Richard M. Thalheimer.

Janice M. Thompson Fund  
Est. 1963 by bequest of Janice M. Thompson.

William and Marion Tittel Fund  
Est. 1990 by bequest of William Tittel.

William and Ethel Tittel Fund  
Est. 1990 by bequest of William Tittel.

Lavonne Tokarczyk — S.A.F.E. Fund  
Est. 2002 by Judy Rettig and Christine Santoro.

Minnie Tolles Scholarship Fund  
Est. 1988 by bequest of Minnie Tolles.

Raynham Townshend Fund  
Est. 1993 by Mrs. Raynham Townshend  
and family.

Second Annual State Treasurer’s  
Black & White Charity Ball Fund  
Est. 1999 by proceeds of State Treasurer’s  
Black and White Charity Ball.

Grace Ellen Treat Fund  
Est. 1974 by bequest of Grace Ellen Treat.

Benjamin Paul Trivelli Fund  
Est. 2005 by Sharon Trivelli and Nicholas  
Lavorato.

C. Rachel Trowbridge Fund  
Est. 1983 by bequest of C. Rachel Trowbridge.

## Using Movement to Develop Mind and Body

Middle school boys at Betsy Ross Arts Magnet School learn the dance moves of the Brazilian martial art form Capoeira during an after-school workshop, supported with a grant from The Community Foundation. The sessions are part of the Elm City Dance Collective’s *Girls in Motion/Boys in Motion* program, which brings dance and movement to middle schools.





COMMUNITY NOW

Funds of The Community Foundation\*continued

MORE THAN EVER

May Wells Trowbridge Fund  
Est. 1946 by bequest of May Wells Trowbridge.

Hayes Q. Trowbridge Fund  
Est. 1969 by bequest of Hayes Q. Trowbridge.

Olga M. Trowbridge Fund  
Est. 1989 by bequest of Olga M. Trowbridge.

Truesdell Donor Advised Fund  
Est. 2007 by Hobart G. and Nancy C. Truesdell.

Edgar Tullock Emphysema Fund  
Est. 1983 by bequest of Edgar Tullock.

SSG Nate Turner Scholarship Fund  
Est. 2011 by Marcia & Charles (Tom) Turner.

Lester Turner NAACP Scholarship Fund  
Est. 2008 by the Greater New Haven NAACP.

J. Birney Tuttle Fund  
Est. 1952 by Josephine B. Tuttle.

Wachovia National Bank Fund  
Est. 1973 by Union Trust Company.

United Way of Greater New Haven Fund  
Est. 1997 by United Way of Greater New Haven.

Urban Improvement Corps Fund  
Est. 1984 by Urban Improvement Corporation.

Urban League of Southern Connecticut Fund  
Est. 2010 by Urban League of Southern CT.

Urban Prosperity Foundation Fund  
Est. 2010 by Howard K. Hill.

Valley Foundation Fund  
Est. 1980 by Harry Bassett.

Ralph G. Van Name Fund  
Est. 1962 by bequest of Ralph G. Van Name.

Theodora Van Name Fund  
Est. 1962 by bequest of Theodora Van Name.

Willard G. Van Name Fund  
Est. 1960 by bequest of Willard G. Van Name.

William Verdi Fund  
Est. 1959 by memorial gifts.

Veterans Housing Assistance Fund  
Est. 2008 by Howard R. Udell and Michael Friedman.

Barbara Vincent Family Donor Advised Fund  
Est. 2009 by Barbara J. Vincent and the Vincent Foundation.

Barry J. Vine District Animal Control Fund  
Est. 2002 by Judy Rettig and Christine Santoro.

Visiting Nurse Association of South Central Connecticut Inc. Fund  
Est. 1993 by Visiting Nurse Association of South Central CT.

Lawrence John Vitali Scholarship for Music Fund  
Est. 2001 by A. Patricia Vitali.

Fund for Volunteerism  
Est. 1999 by the Volunteer Action Center of Greater New Haven Inc.

Wack Family Fund  
Est. 1993 by Dr. Jeffrey Wack.

John Charles & Diana Seton Wakerley Fund  
Est. 2012 by John Charles and Diana Seton Wakerley.

Nellie M. Ward Fund  
Est. 1957 by bequest of Nellie M. Ward.

Wareck Family Fund  
Est. 1995 by Barbara C. Wareck.

Watershed Fund  
Est. 2003 by Watershed Fund Inc.

Martha W. R. Wayland Fund  
Est. 1971 bequest of Martha W. R. Wayland.

Maureen Weaver and Robert Leighton Fund  
Est. 2014 by Maureen Weaver and Robert Leighton.

Margaret B. Weir Fund  
Est. 1977 by bequest of Margaret B. Weir.

Weiss Family Memorial Fund  
Est. 1990 by Drs. Christina & David Cugell.

G. Harold Welch Fund  
Est. 1987 by Harriet H. Welch.

Bessie B. Wessel Fund  
Est. 1976 by bequest of Bessie B. Wessel.

Irmgard and Morris Wessel Fund  
Est. 1993 by family and friends.

Clarence C. Westerberg Fund  
Est. 2009 by Clarence C. Westerberg.

West Haven Rotary Fund  
Est. 1964 by the Rotary Club of West Haven.

Leonor and Isadore Wexler Fund  
Est. 1986 by gifts in memory of Isadore L. Wexler.

John D. Wheeler Fund  
Est. 1982 by bequest of John D. Wheeler.

Elizabeth White Fund for Lyme  
Est. 2014 by bequest of Elizabeth White.

Ruth Whittemore Fund  
Est. 2006 by bequest of Dr. Ruth Whittemore.

Alexander Whitton Fund  
Est. 1969 by bequest of Alexander W. Whitton.

Vivien White Fund  
Est. 2004 by Vivien White.

Wilbur Fund  
Est. 1998 by an anonymous donor.

Wilder Family Fund  
Est. 1997 by Isabel Wilder.

Louise Farnam Wilson Fund  
Est. 1955 by bequest of Louise Farnam Wilson.

**Frank Winder Fund**  
Est. 2016 by Joy Winder Ford.

Donald & Charlotte Wing Fund  
Est. 1974 by bequest of Donald G. Wing.

Deanne H. and Herbert S. Winokur Jr. Fund  
Est. 2010 by Deanne H. & Herbert S. Winokur.

Woman’s Seamen’s Friend Fund  
Est. 1961 by Woman’s Seamen’s Friend Society of Connecticut.

Woman’s Choral Society Fund  
Est. 1959 by Women’s Choral Society of New Haven.

Women’s Health Services Fund  
Est. 1990 by many donors.

Women’s Vision Fund  
Est. 2009 by an anonymous donor.

Women’s Health Research at Yale Fund  
Est. 2001 by The Community Foundation for Greater New Haven and other donors.

**WOW Fund**  
Est. 2016 by the Women Organizing Women Political Action Committee Inc. (WOWPAC).

Iris & David Wyllie Book Scholarship Fund  
Est. 2008 by David Wyllie.

Isadora Wyman Fund  
Est. 2009 by Carol Ross.

Yale University Women’s Organization Scholarship Trust Fund  
Est. 1998 by Yale University Women’s Organization.

Yale/Seton Book Awards Endowed Fund  
Est. 2001 by Phyllis Z. and Fenmore R. Seton.

Tina Yao Fund  
Est. 2015 by Nancy Yao Maasbach.

Robert M. and Ada W. Yerkes Fund  
Est. 2001 by Roberta Yerkes Blanshard.

Young Men’s Institute Library, Alfred P. Goodyer Scholarship Fund  
Est. 1998 by Young Men’s Institute Library.

Youth of Color in the Arts — Mary E. Boyle Fund  
Est. by proceeds of Take 6 concert and by friends of Mary Boyle.

Yudkin Family Fund  
Est. 1999 by Richard A. Yudkin.

Yudkin Family Scholarship Fund  
Est. 2011 by bequest of Richard A. Yudkin.

Seymour L. Yudkin Fund  
Est. 20121 by Seymour L. Yudkin.

Seymour L. Yudkin Scholarship Fund  
Est. 2012 by Seymour L. Yudkin.

Janice and Richard Yusza Fund  
Est. 2009 by Janice and Richard Yusza.

Zdru Family Fund  
Established in 2015 by George Zdru as a donor advised fund.

Ruth and Sherman Zudekoff Scholarship Fund  
Est. 2000 by Ruth and Sherman Zudekoff.

Albert Zunder Fund  
Est. 1951 by bequest of Fanny Fern Falk.

The Foundation’s charitable assets are held by:  
The Foundation’s Corporation, known as the The Community Foundation for Greater New Haven Inc., or in trust by one of four trustee banks:  
Wells Fargo  
Bank of America  
Key Bank  
People’s United Bank



**Remaining Active in Old Age**  
The Agency on Aging of South Central Connecticut empowers adults to remain as independent and engaged as possible within their communities through advocacy, information and services, such as its Aging and Disability Resource Center. The Agency is supported by a mixture of government funding, foundation and corporate grants, donations and income from services. Every year, the Agency receives designated resources from The Foundation’s Partnership for Aging Fund.



# COMMUNITY NOW

## Organization Funds\*

Organization Funds are established by nonprofits that wish to have their charitable assets managed under The Community Foundation’s long-term investment model. Since 2014, The Foundation’s Corporation has been a registered investment adviser.

Agency on Aging Fund  
Christine Alexander Fund for New Haven Reads  
Amity & Woodbridge Historical Society Fund  
Artist Next Door Fund  
Arts Council Board-Designated Reserve Fund  
**Artspace Organization Fund**  
Birgitta Johnson Campership Fund for Fellowship Place  
Bittker Fund for the New Haven Free Public Library  
**Branford Community Foundation Fund**  
Bridge Family Center Inc. Fund  
Bridgeport Rotary Club Foundation  
Burry Fredrik Foundation Fund  
Center for Family Justice Inc. Fund  
Central Connecticut Coast YMCA Fund  
Cheshire Historical Society Fund  
Cheshire Land Trust Inc. — Elizabeth P. Ives Endowment Fund  
Children In Placement Endowment Fund  
Christian Community Action Inc. Endowment Fund  
Civic Orchestra of New Haven Operating Fund  
Cold Spring School Fund  
Community Foundation of Northwest CT Fund  
Connecticut Association of Latinos in Higher Education Endowment Fund  
Connecticut Coalition on Aging Fund  
Connecticut Mental Health Center Foundation Endowment Fund

Phil & Debby Dwyer Central Connecticut Coast YMCA Fund  
Bob Eddy Scholarship Fund  
Edgerton Park Conservancy Fund  
Robert Evans Fund for Long Wharf Theatre  
Farmington Canal Rail to Trail Association Fund  
Fund for Fellowship Place Inc.  
Magee Fenn Scholarship Fund  
Friends of Cheshire Public Library Fund  
Gateway Community College Foundation Fund  
Gesell Institute of Child Development Fund  
Ulysses S. Grant Foundation Fund II  
Greater Dwight Development Corp. Fund  
Greater New Haven Community Loan Fund  
Greisinger Fund for the New Haven Free Public Library  
Bette G. Gruskay Education Fund for the New Haven Symphony Orchestra  
Guilford Foundation Fund  
Oscar & Irma Hamburger Memorial Endowment Fund  
Higher Heights Youth Empowerment Programs Fund  
Housing Operations Management Enterprises Fund  
Immanuel Missionary Baptist Church Fund  
Isaiah Fund for the Community Soup Kitchen  
Junior League of Greater New Haven Fund  
Dr. Chuwan Kim & Family Fund for East Rock

Hesung Chun & Kwang Lim Koh Family Fund  
LEAP Endowment Fund  
Margaret Leavy Fund for Legal Services  
Long Wharf Doris Duke Endowment Fund  
Long Wharf Theatre Fund for Artistic Excellence  
Lord/Kubler Fund for New Work — Fund B  
Lulac Head Start Fund  
Milford Fine Arts Council Trust Fund  
**Music Haven Inc. Fund**  
Neighborhood Music School Board-Designated Fund  
Dr. Regina M. Lily Warner Endowment Fund  
Neighborhood Music School Endowment Fund  
New Haven Chorale Fund  
New Haven Free Public Library Fund  
New Haven Green Fund  
Fund for the New Haven Green Endowment  
New Haven Museum and Historical Society Fund  
New Haven Museum Acquisition Fund  
New Haven Public School Foundation Inc. Fund  
New Haven Real Estate Educational Foundation Fund #2  
New Reach Fund  
NewAlliance Foundation Fund  
NHSO Board-Designated Stability Fund  
NHSO Foundation Inc. Fund  
Orange Congregational Church Fund

Orchard House Fund  
Mary L. Pepe Fund for Long Wharf Theatre  
Pierce Fund for the New Haven Free Public Library  
J. B. Pierce Laboratory Fund  
John B. Pierce Foundation Fund  
Russell Loan Fund for the New Haven Free Library  
Shepherds Inc. Fund  
Shubert Theater New Haven Fund  
Silvermine Arts Center Fund  
Sleeping Giant Park Association Fund  
**The Prosperity Foundation Inc. Fund**  
Truman Olin Fund  
Universal Health Care Foundation of CT Fund  
Village Improvement Association Fund  
Watershed Fund  
West Haven Community House Fund  
WNEIP Ritvo Scholarship Fund  
Western New England Institute for Psychoanalysis Fund  
Annual Y.U.W.O. Scholarship Fund  
Yale University Women’s Organization Operating Fund

# MORE THAN EVER

## Donors to Foundation Funds\*

As we see year after year, our community’s spirit of generosity and belief in itself is reflected in giving to The Foundation. The Foundation recorded more than \$19 Million in new gifts and transfers of charitable assets in 2016. These gifts were made in support of specific causes and nonprofits of importance to our donors, as well as to support Foundation leadership activities designed to meet immediate needs in our community.



|  |  |                                    |                                  |
|--|--|------------------------------------|----------------------------------|
| <i>Anonymous</i>                       | Dr. Lourdes Alvarez                    | Alfredo L. and Hilary Axtmayer II  | Mr. & Mrs. Martin Bernstein      |
| Mr. & Mrs. Leslie D. Aberson           | AmazonSmile Foundation                 | Patricia Hayes Axtmayer            | Rick & Erin Bibber               |
| Karen Ablondi                          | Lauren Ametrano                        | Nadine Baconi                      | <i>Nan Birdwhistell</i>          |
| Mary Abriola                           | Laura Anderko & Robert Dinse           | Joanne Bailey                      | Carla A. Birmingham              |
| <i>Nina Adams &amp; Moreson Kaplan</i> | Phyllis L. Anderson                    | <i>Dr. Leon Bailey</i>             | Jeffrey & Sherrie Bitterman      |
| Deborah Michelle Addington             | Robert J. Anderson                     | Matthew Bailey                     | <i>Corie L. Blanck</i>           |
| <i>Susan S. Addiss</i>                 | Andrew & Jessica’s ZA Friends          | Albert H. Barclay Jr.              | Jessica Blank                    |
| Jonathan Adler                         | Farrin R. Anello                       | Thomas Barclay                     | Jeffrey & Joyce Bliss            |
| Laurie Adler                           | Julia & Robert Anello                  | Mrs. Kathy Barkin                  | Matthew Blomerth                 |
| Jean & Bob Adnopoz                     | Rose E. Anello                         | Beverly Barnes                     | Andrea Bloom & William T. Chapin |
| Adoni Spiritual Formation Center       | Barbara & Chip Angle                   | Elaine B. Battles                  | Betty Lou & Joseph Blumberg      |
| Elliot & Carol Agin                    | Martin A. & Maria F. Aragona           | Kate Bauer & Eric Lindblom         | R. Reid Bogie                    |
| Bruce Agins                            | Luis & Laurele Arata                   | Richard Baxter                     | Kim Bohen & Lily James           |
| <i>Melinda Agsten</i>                  | <i>Walter &amp; Diane Fried Ariker</i> | <i>Claudette Beamon</i>            | Paul & Patricia Bonelli          |
| Jane Aiello                            | <i>Jeremy &amp; Stephanie Ariker</i>   | Mallory Beberman                   | James & Monna Bonner             |
| Phyllis C. Aiello                      | Douglas Arnstein                       | Eileen Becker-Dunn                 | Harold D. Bornstein Jr., MD      |
| Rachel & Jonathan Albert               | <i>Katharine B. Arnstein</i>           | Beers, Hamerman & Company PC       | Marie E. Borroff                 |
| <i>Myles &amp; Nancy Alderman</i>      | Ann & Ernest Ashton                    | David & Jeanne Bell                | Larry Botelle                    |
| Nancy Alexander & Phillip G. Bernstein | Patricia H. Atwater                    | Stacy A. Bergantino                | Richard Bourdeau & Family        |
| Roger Alling Trust                     | <i>Stephen &amp; Judith August</i>     | <i>Dr. Eric &amp; Ethel Berger</i> | Audrey Boxwell                   |
| Randi Alpert                           | Joseph Avni-Singer                     | Dr. Jean & Larry Berkwitt          | Maryann Bracken                  |
|  | Lisa Axelrod                           | David & Lida Bernard               | Mary Bradley                     |



COMMUNITY NOW

MORE THAN EVER

Donors to Foundation Funds\* continued

Robert & Kathleen Bradley

Austin Bramwell

Lori & Byron Branning

Thomas Breen

Stephanie Breindel & Family

Brenner Saltzman & Wallman

Linda Mason Briggs

Chester & Glenna Brodnicki

Raeann Bromark

The Bromley Charitable Trust

Althea M. Brooks

Edwin Brooks

John & Judith Brooks

Sharon Brooks

Josephine Broude

Beulah W. Brown

Paula Burke

Lynn Burton

Peter Butler

Jeannette Byers

Shelagh M. Byrne

Shornda H. Cadore

Guido & Anne Calabresi

Linda & Vince Calarco

Yolanda Caldera-Durant

Tricia Caldwell

Barbara J. Calosso

Ken Campbell

Connecticut Association

for the Performing Arts

Lincoln Caplan II &

Susan L. Carney

Sharon Cappetta

Gloria & Daniel Carey

Jean H. Caron

M.A. Carrara

Ernest & Nancy Cassella

Nicole Castronuovo

Florin & Octavia Catana

Marcia A. Cavanaugh

Andrea & Vinnie Cea

Katherine Ceccarelli

Phyllis E. Ceccarelli &

Elizabeth Ann Ceccarelli

Chadbourne Family

Alison Faulkner Chapman

Debbie Chen

Carol L. Cheney

Barbara N. Chesler

Michael & Nadine Chikuni

Chip & Barbara Angle Fund

of The Boston Foundation

Renee Chotiner

Leah Churinske

Peter & Holly Cimino

Renee Cimino

Christina Ciociola

Frances T. Clark

Shannon Clarkson

Nancy Clayton & Brad Collins

Joanne Cleary

Karen Clute

Meghan Clyne

Roxanne Coady

Frank Cochran &

Stephanie FitzGerald

Joseph & Shelly Cogguillo

Amir Cohen

Seth & Barbara Cohen

Dr. Judith Colton

William S. Colwell, Esq.

James P. Comer, MD

Diana Congdon

Sally E. Connolly

Cynthia D. Conrad

Brendan & Carol Conry

Pedro & Janet Contreras

Gary & Cynthia Cook

Cornell University Foundation,

Priscilla A. Schaeneman

Cornell University Foundation,

Jody R. Schurman Account &

Rosalie Schurman Account

Sydney & David Covey

Criterion Capital Management

Elio Cruz

David W. and Christina Enroth

Cugell Unitrust

Alison Cunningham

C. Elizabeth & Gerard Cunningham

Margaret E. Cunningham

Angelo & Sara D’Amato

Sandra D’Aprile

Robert Davis

Tarah R. Davis

Tia Debrick

Linda F. Decker

Dennis & Deborah DeLillo

Department of Health &

Human Services/New Haven

Healthy Start

Diane Deschenes

Carl & Carol Devellis

Lynn Dgetluck

Ann Pecora Diamond

Jeff & Janet Dickey

Nancy Dickgiesser

David M. Dickson

Emma Dickson

Johanna Dickson

Lisa Diggs

Brett M. Dignam

Michael & Laura Dimeglio

Elena Dixon

Tyler Dobbs

Shirley Dobihal

Mary Donatelli Tonry

Tadhg Dooley

Deanna L. Dorkins

Janet D’Orso Gaetjens

Joshua Doxsee

Craig D. Durgy & Rona C. Lynch

Edwin Durgy

Peter & Elyn Dworak

Rebecca R. Eccles

Liz Egan

Winning Battles for Connecticut’s Veterans

The Connecticut Veteran’s Legal Center started seven years ago with its largest support from The Community Foundation for Greater New Haven. It has since grown from one full-time employee to nine, and in 2016 it helped resolve 567 legal matters for veterans. The organization provides access to social workers, psychologists, attorneys and other professionals to meet each client’s set of needs.



Karen A. Egri

Anne Eisner

Helmer & Joanne Ekstrom

Elim Park Baptist Home

Deborah Elkin

Peter Elliman

Thomas & Elizabeth Elliman

Barbara Ellinghaus

Herbert Epstein

Irwin & Louise Epstein

Rose Errington

A. Walter & Sharyn A. Esdaile

Linda & Mark Estacion

Dr. Mary Anne Evangelist

Sarah Fabish

Katie Fahey

Elizabeth Fajans

Jack & Harriet Fast

Elizabeth O. Fearon

Catharine B. Fender

Marilyn & Michael Fenollosa

Dick & Marissa Ferguson

Kevin Ferguson

Michael Ferrucci

Nancy Fink

First Church of Christ,  
Woodbridge

First Niagara Financial  
Corporation

Margaret Fischer

Brian Flanagan

Hillary M. Forden

Arnold & Norene Foster

Laurellen Foster

Peter Francini

Lisa M. Freeman

Barbara J. Freiler

Louis & Margaret Freiler

Nancy E. Freiler

Carrie French

Robert & Susan Frew

Friends of Andrew & Jess

Connie Frontis & Neil Brockwehl

Alison Frost

Holly Frost

George & Cecile Furkiotis

Deidre Galbo

Mark Gallogly & Elizabeth Strickler

Donna Galluzzo

George & Judith Gamble

Garden Club of New Haven

Patricia Garland

Walter & Betsy Gay

Ted Gayer

Dr. Myron & Phyllis Genel

Clara Genetos

Eugénie & Bradford Gentry

Georgetown University,  
FNP Department

Estate of Dolores Giannini

Peter Gilbert

William W. & Ellen Kelly Ginsberg

Guiseppe and Lynn Giordano

Nina Glickson

Leroy T. Glover &

Catherine Wesoly

Anne Godsey

Miriam Gohara

Luis Goitia

Lindy Lee Gold

The Joe and Cindy Goldberg  
Family Foundation

Robin Goldberg

Harrison Golden

Armando & Nancy Goncalves

John D. Gordon, CPA

Karin M. Gould

Mary & Bob Grande

Lillian B. Granderson

William & Jean Graustein

Carol Grave

Margaret C. Gray

Debra Greenberger

Andra Greene

Sidney H. Greene

Ramona Gregg

Randi Grimes

Dan & Mary Margaret Groberg

Bonita D. Grubbs

Jimmy Gruber

Karen Guastelle & Carole Pagliuco

Louise Harvey Guion

Peter Gulick

Avni Gupta-Kagan

Elizabeth Haas

Judith Hahn

Violette Haldane

Dimitrios Halikias

Christopher Hall

Jessica Halpern

Mindy & Mark Halpern

Roberta Halpern

“I’m committed to getting more educated personally on issues. I realize I had been complacent before.”

A Foundation Donor



COMMUNITY NOW

DONORS TO FOUNDATION FUNDS

MORE THAN EVER

Donors to Foundation Funds\* continued

|   |   |  |   |
|---|---|--|---|
| Jane Hanselman                              | <i>Joan P. Huwiler</i>  | Torres & Friedman LLP                                  | of Fairfield                                |
| Carolyn Hansen                              | Paul Huwiler  | E. Helen Kauder & Barry Nalebuff                       | Nancy & Philip Lebov                        |
| Harp 2015                                   | ICAST — International Center for Appropriate and Sustainable Technology | Paul & Ilene Kauffman                                  | Patricia Levey Lebow                        |
| Lisa Harris                                 |   | Dr. Paula B. Kavathas                                  | Leighton Lee III                            |
| Ann Marie Hart                              | Janine Idelson  | Eunice Kaymen  | Philip J. Lee                               |
| John & Martha Hastings                      | Yari Ijeh   | Leo Kayser III   | William & Kate Lee                          |
| Kim Healey                                  | Inaugural Ball 2016   | Jean R. Kelley   | Bob & Ellen Leibenluft                      |
| <i>Jeanny Heermance</i>                     | Integrated Wellness Group   | Mr. & Mrs. Jerald L. Kelly                             | <i>Robert Leighton &amp; Maureen Weaver</i> |
| Alexys Heffernan                            | Irell & Manella LLP   | Frank Kenna Family Trust                               | The Leo Rosner Foundation Inc.              |
| Samuel & Joan Hellerman                     | Idit Isaacsohn  | Nikolas & Susannah Kerest                              | Garry & Nancy Leonard                       |
| Estate of Alcibiades G. Heris               | John & Loretta James  | Kidderbrook Foundation                                 | John M. Leventhal                           |
| Dawn & Richard Hersch                       | Jorge Jiménez   | Elizabeth J. Kilbride                                  | Stuart & Judy Levitz                        |
| William & Irene Hobbes                      | Brian & Martha Johnson  | <i>Dominick Di Gangi &amp; Valerie Knight-Di Gangi</i> | Sheila Levrant de Bretteville               |
| Karen L. Hobbes & Jeffery R. Mitchell       | Monica & Jason Johnson  | Christin Knowlton & Dylan Jones                        | Betty Levy                                  |
| Hobson Associates                           | Nancy Roldan Johnson  | Sr. Thomasine Knowlton, CST                            | Wanda R. Lewis                              |
| <i>Beverly Hodgson &amp; John Leventhal</i> | Janet Jones   | Morgan Knudsen   | Liberty Bank Foundation                     |
| <i>Mr. &amp; Mrs. Lawrence H. Hoffman</i>   | Monica C. Joyner  | Neal Konstantin  | Kimberly Link                               |
| Lucinda Hogarty                             | Shirley Joyner  | Robert & Bonnie Kreitler                               | Chaim Litwin, DVM                           |
| Adriana Hoogvelt-Sanchez                    | Maureen Julian  | Cindy Kruger   | Brian & Sandra Livingston                   |
| Emily J. Horning                            | Bertha Kahn   | Leslie Krumholz  | Lori Lodge                                  |
| <i>Jim Horwitz &amp; Sandy Allison</i>      | Stephen Kaminsky & Lisa Wilson  | Patrick & Carole Lalor                                 | Joseph F. Loewenstein & C. Lynne Tatlock    |
| <i>Duane &amp; Margaret Howell</i>          | Beatrice Kandell  | <i>Ruth Lambert &amp; Henry Harrison</i>               | Peter Loge                                  |
| Robin Huckaby                               | Gina Kapilian   | <i>Richard &amp; Lisa Lammers</i>                      | <i>Charles H. Long</i>                      |
| Alix Hunter                                 | Annie & Ben Kaplan  | Kim & Derek Laprade                                    | Robin M. Long                               |
| Kathleen Hunter                             | Richard Kaplan  | Nancy LaRoche  | Linda K. Lorimer & Charles Ellis            |
| <i>Veronica Huvelle</i>                     | Susan Kashaf  | The Latimer Group                                      | Rich & Kathy Loughlin                       |
|   | Kasowitz, Benson,   | League of Women Voters                                 |   |

“Big ideas come from connections and relationships.”

A Foundation Grantee

|   |                               |                                     |  |
|---|-------------------------------|-------------------------------------|--|
| Mary F. Lowery                                | The McClorey Family           | <i>Emma Paulett Moore</i>           | Sharon Nordgren                          |
| <i>Abygale Lund</i>                           | Michael & Irene McCoy         | James & Peggy Moore                 | Dr. Michael A. Norko                     |
| Sue & Steffen Lunde                           | Cheryl L. McGirl              | Marta Elisa Moret & Peter Salovey   | Edward J. & Priscilla Ochman             |
| Basil Lyden                                   | Nancy McKiernan               | <i>Dr. James L. Morgan</i>          | <i>Elise Olgin</i>                       |
| Leah Lyden                                    | Dani J. McLeod                | Stephen J. and Pamela Morin         | Doreen Oliveira                          |
| Lauretta Lyons                                | Elaine M. McLeod              | Edward & Carolann Morrissey         | Sharon M. Oster                          |
| Sarah Maben and the Optum Relationship Office | Thomas McMahon                | Charles Moseley                     | Robert & Sally O’Such                    |
| Margaret MacMullen                            | Julia M. McNamara             | Ken Mouning                         | Tinna Otero                              |
| William Madden                                | Deb McNulty                   | Thelma L. Mouning                   | Stephanie Ovens & Marcella Stearns       |
| Janet A. Madigan, MD                          | Jack & Mike Mechem            | Duffy Mudry                         | John & Frances Padilla                   |
| Kaye W. Maggart                               | Peter J. & Prudence F. Meehan | Elora Mukherjee                     | Jordy Padilla                            |
| Michael Magnotta                              | Richard & Yvonne Megenis      | Marion Mullings                     | Virginia Page                            |
| David Magram                                  | Roslyn Milstein Meyer         | <i>Fernando J. Muñiz</i>            | Joseph A. Pagliaro Jr.                   |
| Martha Maguire                                | Nicole Meyers                 | Murtha Cullina LLP                  | Elisabeth Palatiello                     |
| Estate of Robert Mailhouse                    | Marc & Tanya Michaelson       | Minor Myers                         | Marguerite Palisoul                      |
| Rebecca L. Malakoff                           | Patsy Michelle                | Laurence P. Nadel & Susan J. Bryson | Helen L. Palmer                          |
| Jocelyn Malkin, MD                            | Daniel & Judith Miglio        | Jeff Nash                           | Kevin M. Palmieri                        |
| <i>Wendy Marans</i>                           | Dave & Elisa Milano           | Roger & Ellen Nash                  | Melinda Papowitz                         |
| Andrea Martinez                               | Lauren Miller                 | Lisa & James Navroth                | Gisele M. Parent                         |
| Zachary & Laura Martinez                      | William H. & Irene K. Miller  | Ellen Nelson                        | Parents of Amity Creative Theater (PACT) |
| Marian F. Martone                             | Charitable Account            | Richard E. Nelson                   | Cynthia Parker                           |
| Patti Masarek                                 | Eric & Carolyn Millman        | The Netter Foundation Inc.          | Jason Parkin                             |
| Tatiana & Giovanni Maschi                     | Carol Mills                   | David I. Newton                     | Robert & Arlene Patten                   |
| Josephine Massey                              | Lesley Mills                  | Miriam Niederman                    | Barbara Pearce & Norman Fleming          |
| Vincent & Anna Mata                           | Stacy Milner                  | Susan & Robert Nobleman             | <i>Mary L. Pepe</i>                      |
| <i>Rick Mayer</i>                             | Kelley A. Mitchell            | Susan Garcia Nofi                   |  |
| Dr. Carolyn Mazure                            | <i>Mrs. Susan Mix</i>         | Nicole Nolt                         |  |
|   | Marcie Monaco & Tammy Lizotte |                                     |  |



Addressing Incarceration Injustices

The Foundation’s strategic work on reentry and justice reform led to a Fall Convening entitled *EMERGING: Life After Incarceration* with author Shaka Senghor. The event was organized with EMERGE CT Inc., one of several local providers of services to formerly incarcerated individuals and their families. In 2016, The Foundation launched a multi-year Instagram campaign to share stories of returning individuals. Currently, more than \$600,000 has been committed to this strategy.



COMMUNITY NOW

DONORS TO FOUNDATION FUNDS

MORE THAN EVER

Donors to Foundation Funds\* continued

“There is greater energy and attention to issues CWEALF has worked on for 43 years; we need to organize and sustain the desire among people for action.”

Kate Farrar, Executive Director, Connecticut Women’s Education and Legal Fund

|  |   |   |                                      |
|--|---|---|--------------------------------------|
| Paul & Arlene Pepin                      | Joan Pruzinsky                            | Anita Rosenblum                         | Priscilla A. Schaeneman              |
| Joseph & Helen Percario                  | Phebe, Guy & Tessa Quattrucci             | Stuart & Susan Rosenholtz               | Kenneth E. Schaible                  |
| Judith Peres                             | David Quinn                               | <i>Judy Sirota Rosenthal</i>            | Anne Schenck                         |
| Eugene & Geraldine Pergament             | <i>Natasha Ray</i>                        | Mr. & Mrs. Brian K. Rosier              | Theresa Schermerhorn                 |
| Diane Perillo                            | David Redmond                             | Jean Roslonowski                        | Gavin Schiffres                      |
| Eileen Perillo                           | Christine Reesor                          | <i>Stephen &amp; Carol Ross</i>         | <i>David &amp; Mary Ann Schiller</i> |
| Constance Perkins                        | Reid & Riege PC                           | Janis Rossman                           | William & Martha Schipul             |
| Gerald Perloff                           | Renee B. Fisher Foundation Inc.           | <i>Sheilah Rostow</i>                   | Beth & Jeff Schneider                |
| Penny G. Perloff                         | Mary & Ron Repetti                        | Marsha Roth and Family                  | Mark & Cindy Schoenfeld              |
| Diane Petra                              | Richard & Paula Resch                     | Holly Rothbard                          | Lois & Alan Schottenstein            |
| <i>Noel &amp; Elizabeth Petra</i>        | Judith Resnik                             | Wendy C. Rowe                           | Davida Schpero-Pepe & Steven W. Pepe |
| <i>David Phelps</i>                      | Alan & Elizabeth Reznik                   | Elizabeth Rozanski                      | Robert & Eileen Schreck              |
| Margaret Phelps                          | Catherine & Mick Ribeiro                  | Nancy A. Rozendal & Gordon Lisker       | Judith C. Schurman                   |
| Cherie Phoenix                           | Estate of Florence Rice                   | Randy M. Ruotolo                        | Roger Schulman                       |
| <i>Charles Pillsbury</i>                 | Vincent L. Richitelli                     | John Rush                               | <i>Patricia A. Scussel</i>           |
| Dr. & Mrs. J. B. Pinski                  | Rita Allen Foundation                     | Frances Russell                         | Matt & Christine Seager              |
| Pirie Associates Architects              | Anna Rivera-Alfaro                        | Marion M. Russell                       | Seedlings Foundation                 |
| Francois & Patricia Poisson              | Helen Riviere                             | <i>James E. Ryan</i>                    | Kristin Seeley                       |
| Carol A. Pollard                         | Robert S. Fers Inc.                       | Joanne Saccio                           | Barbara Segaloff                     |
| Jared Pollard                            | Clare & Patrick Robert                    | <i>Shelly Saczynski</i>                 | Katelyn Selver                       |
| Deborah Pontbriant                       | <i>Susanne Roberts</i>                    | Mr. & Mrs. Warren Salinger              | Sandra Vigliotti Senich              |
| Celia B. Ponvert                         | Kelley N. Robinson                        | <i>Raquel Santiago-Martinez</i>         | Lauren S. Seplowitz                  |
| Alice E. Poole                           | Shanette Robinson                         | Frank & Betty Lou Santino Sr.           | The Sequino Family                   |
| <i>Angela G. &amp; William E. Powers</i> | <i>Sergio &amp; Randi Rubin Rodriguez</i> | Community Foundation of Sarasota County | Cis & Jim Serling                    |
| David G. Powrie                          | Brian & Rhonna Rogol                      | David R. Schaefer & Janet C. Hall       | Phyllis Z. Seton                     |
| Pratt & Whitney                          | Nancy Rondano                             |   | Dr. Seema Shah                       |
| Rosemary Prete                           | Larry Rosenberg                           |   |                                      |

|  |                                    |                                     |  |
|--|------------------------------------|-------------------------------------|--|
| Jordan Shapiro                               | <i>Kerala &amp; Richard Snyder</i> | Dariusz & Terepka                   | The Van Wart Family                    |
| Susan H. Shapiro                             | Paulo Soares                       | Gilda Tesoriero                     | <i>Barry &amp; Hyla Vine</i>           |
| <i>Jane A. Shaw</i>                          | Rachel Solomon                     | Third Wave Television Inc           | Peter, Patty, Chris, & Talia Waelsch   |
| <i>Jana &amp; Tom Shea</i>                   | Pedro Soto                         | The Tides Foundation                | <i>Janna Wagner</i>                    |
| Louise Sheiner                               | <i>Katharine O. Spadacenta</i>     | Yolanda Tirado                      | Lesley Wagner                          |
| Roberta L. Shew                              | Stephanie Spangler                 | Michelle E. Tirella                 | Julee Waldrop                          |
| Nima Shirazi                                 | Viola J. Spinelli Trust            | Anne Tofflemire                     | <i>Jolyn Washington Walker</i>         |
| Kelly Short                                  | Wyatt Sprenkle                     | Beverly B. Tomb                     | Barbara Wallitt                        |
| Phyllis Silverman                            | Deborah Stanley-McAulay            | Pamela Tomski                       | Barbara Wareck & Charles Perrow        |
| Dr. Bruce D. Simonds & Pamela Bisbee-Simonds | Jennifer Steinberg                 | <i>Michelle Traub</i>               | Robert & Gayle Warhola                 |
| Robert and Tara Sires                        | Dr. Joan A. Steitz                 | Travelers Community Connections     | Vanessa E. Washington                  |
|  | Betsy & Lawrence Stern             | Triton Foundation                   | Georgia N. Waterman                    |
| Teresa M. Sirico                             | Dorna Stover                       | Hobart G. Truesdell                 | MaryAnn Watson                         |
| Skadden, Arps, Slate, Meagher & Flom LLP     | <i>Dr. Lynn Street</i>             | Nancy C. Truesdell                  | Vielka Watson                          |
| Sidney Skolnick                              | <i>Carla &amp; Sean Sullivan</i>   | Mike & Diane Trusty                 | Lauren Watstein                        |
| Mr. & Mrs. Leonard Skope                     | Charles Sullivan                   | John & Marisa Tsalapatanis          | <i>Carla Weil</i>                      |
| Gene Skowronski Jr. & Mia Fanali-Skowronski  | Thomas Sullivan                    | Charles & Claudia Turcotte          | Sheryl Weiner                          |
| Lisa M. Slade                                | Diane Svigals                      | Jennifer Turner                     | Gail & Marc Weingarten                 |
| Matthew J. Slaughter                         | Herb Swartz                        | Tom & Marcia Turner                 | <i>Martha Weisbart</i>                 |
| Patricia E. Small                            | Thompson & Susan Swayne            | UIL Holdings Corporation Foundation | Kevin Werner                           |
| Eva B. Smith                                 | Cathy & Rod Swift                  | Diana & Thomas Ullmann              | Amanda Welsh                           |
| Ratasha Smith                                | Joan & Kenneth Szymansky           | United Way of Greater New Haven     | Robert & June Wessel                   |
| Robert & Lee Smith                           | Besher Tabbara                     | Dr. Stephen Updegrove               | <i>Glenn &amp; Dotty Weston-Murphy</i> |
| Susan Smith                                  | Roger & Maryanne Tackeff           | Jeffrey Updyke                      | <i>Susan Whetstone</i>                 |
| Tremika E. Smith                             | Daniel Talero                      | Patricia Van Deventer               | Ana White                              |
| Bryan Snook                                  | Robert Talpin & Nan Norene         | Almira & Ronald Vichiola            | Barrett & Anne White                   |
|  | Matthew Teicholz                   |                                     | Robert White Jr. & Patricia White      |
|  | Ursula & Barron Tenny              |                                     |  |

Expanding Powerful Giving Options

Since 1970, The Foundation has offered donor advised funds (DAFs). DAFs have grown in popularity in recent years because of their flexibility and because they enable donors to be involved with grantmaking. Now, in addition to the endowment investment options, donor advisers can choose to have their fund invested so that assets are readily available for grantmaking. For the last five years 31% of new funds created are donor advised and \$12M in grants have been distributed from DAFs.





- William B. Wickwire

Hannah Wides

*Richard & Karen Wies*

*Virginia T. Wilkinson*

Caroline Wilson Palow

Maryann Wimberly

Annick Winokur

Deanne H. & Herbert S. Winokur Jr.

Stephen & Rachel Wizner

Dan & Elly Wolf

Kathryn Wolfson

*Sandra L. Wolin*

Women Organizing Women

Sherise Wood

Charles & Corey Woodcock

Alan Wright

Mark & Kathy Wu

Anna Wurtz

Yale University

Denise Yates

Evelyn & David Yoder

Zackin Zimyeski Sullivan CPAs LLC

Fay Ann Zak & Lynn Bolick

*Patricia Doukas Zandy*

*George Zdru*

Burton & Ellen Zempsky

Anthony & Connie Zerella
- Nicholas & Judith Zerella

Edward & Bernice Zigler

Caryn Zolotorow

Jon H. Zonderman & Laurel B. Shader

The Zorfas Family

Debra Zrelak

“I am concerned that people are not talking to each other. We need discussions with people who have different perspectives, so we aren’t just talking to ourselves.”

A Foundation Donor



Raising Voices Through Song

Formed to celebrate the Town of Wallingford’s tercentenary in 1970, the Wallingford Chorus has continued to serenade the town ever since. It is supported by individual donations and has received funding from The Community Foundation through our Arts Fund and The Great Give®.

Gifts to honor family members or friends are made to many established funds, and are a time-honored and meaningful way to pay tribute to or remember someone special.

In Memory

- Mary B. Arnstein

Hank Bartels

Dr. Miriam C. Birdwhistell

Donald W. Broderick

Christopher W. Caldwell

David Cappetta

Barbara W. Carlson

Sherwin & Clare Casher

Sherwin Casher

Brian D’Orso

Janet Saleh Dickson

Muriel Doris

Andrew Eldredge

Nathaniel K. Fenollosa

Robert Ginsberg & Rebecca Gutterez

Sonya Minor Healey

Maureen C. Horning

Frederick John Kroll

Susan Lewin

Edward & Mary Lowery

Mr. Carroll L. Lucht

Camille Marshall

Julia Christina McNamara

Louise Miller

Keegan D. Moeller
- Johnnie Mouning

Ruth L. Osterweis

James Perillo

Cara Phillips Cunningham

Glenn J. Pollard

Nancy Pugsley

Edwin Pugsley Jr.

Lawrence Rasie & Nancy Redway Pugsley

Abuelita Carmen Rodriguez

Serafin and Hemelinda Rodriguez

Letty M. Russell

Estate of Janet Saleh Dickson

David W. Short

Estate of Clara Stone Briggs

Dorna Stover

Avik Sumon Allen Roy

Wendell Terry

Lisa Mayo Tinney

Benjamin Trivelli

Nate Turner

Amalia & Banyan Van Weelden

Morris A. Wessel

Edith S. Wiley

Eleanor Wilson

In Honor

- InNaam Abdul-Karim

A. F. Drew Alden

Robert J. Anderson

Farrin R. Anello

Julia & Robert Anello

Dr. Stephan Ariyan

May Axtmayer

Alfredo L. and Hilary Axtmayer II

Eliza D. Barclay

Nancy Bartels

Mellisa Bowles

Peter Butler

Heather Calabrese

Kiley L. Cappetta

Lillian Conaway

Audrey L. Conrad

Malwin & Tara Davila

Elizabeth Demir

Charlie Fenollosa

George Fenollosa

Carole Goldberg

Mary & Bob Grande
- Sue Haigh, Paul Janensch, Cindy Simoneau, Tom Appleby

Kristin Hale

Howard K. Hill

Natalie Lambert

Steven Lawrence & Derrick Gordon

John Loge

Marian F. Martone

Julia M. McNamara

Julia Nordgran

Pierce Pappert

Tina Pedrolini Caplan

Elle and Max Petra

William & Randi Pritting

Gabriela Amy Robers

Hillary Rodham Clinton

Alice Romanik

Jana Shea

Lola Sherwin

Katharine O. Spadacenta

Maureen Wagner

Emily Zandy



# COMMUNITY NOW

## Grants and Distributions

More than \$23 Million was awarded in 2016 in grants and distributions through Foundation funds. Among the hundreds of programs funded, The Community Foundation was lead supporter of the second Greater New Haven Community Index. In partnership with DataHaven, The Foundation also produced *The Community Progress Report* to further our collective understanding of our region and of ourselves.



|                                      |          |  |           |
|--------------------------------------|----------|--|-----------|
| The (I'm) Possible Project           | \$434    | Agency on Aging of South Central Connecticut Inc.          | \$280,954 |
| 108 Monkeys                          | \$2,335  | Aid for Orphans Relief Foundation                          | \$3,671   |
| A Better Chance                      | \$1,250  | AIDS Project New Haven                                     | \$1,790   |
| A Broken Umbrella Theatre            | \$250    | Air Force Puppies Inc.                                     | \$1,074   |
| A Different Perspective Inc.         | \$27     | Al's Angels Inc.   | \$500     |
| A Place Called Hope                  | \$5,000  | Albertus Magnus College                                    | \$16,784  |
| A Touch of Comfort                   | \$300    | All Our Kin Inc.   | \$76,585  |
| Abilis Community Foundation Inc.     | \$500    | Almada Lodge — Times Farm Camp Corporation                 | \$15,500  |
| Abilities Without Boundaries         | \$1,218  | Alpha Kappa Alpha, Tau Xi Omega Chapter                    | \$2,230   |
| Ability Beyond Disability Inc.       | \$64     | ALS Association, Connecticut Chapter                       | \$207     |
| ACCESS Educational Service Inc.      | \$1,000  | Alzheimer's Disease and Related Disorders Association Inc. | \$11,000  |
| ACES Education Foundation            | \$500    | Amber Waves Farm   | \$1,000   |
| ACES Educational Center for the Arts | \$250    | America's VetDogs — The Veteran's K-9 Corps.               | \$52      |
| Achievement First                    | \$25,250 | American Anti-Vivisection Society                          | \$9,534   |
| Action Against Hunger, ACF-USA       | \$500    | American Cancer Society, New England Division              | \$12,154  |
| Adam Wysota Foundation               | \$1,196  | American Civil Liberties Union                             | \$10,900  |

### DESIGNATED FUNDS

Grants from designated funds support specific organizations in perpetuity, as expressed by individual donors or groups.

### DONOR ADVISED FUNDS

Grants from donor advised funds are made with the participation of the donors, who wish to be involved in their philanthropy on an ongoing basis.

### FIDUCIARY FUNDS

Grants from fiduciary funds are made on behalf of an organization or project for which The Community Foundation serves as fiscal steward.

### giveGreater.org\*

Grants from giveGreater.org\* are given to the organizations as determined by donors.

|   |          |  |           |
|---|----------|--|-----------|
| American Diabetes Association Connecticut Affiliate               | \$3,000  | ASSIST — American Secondary Schools for International Students & Teachers Inc. | \$1,500   |
| American Foundation for the Blind                                 | \$9,534  | Associated Irish Societies   | \$53      |
| American Friends of Le Korsa                                      | \$500    | Audubon Connecticut  | \$14,360  |
| American Heart Association  | \$820    | Audubon Naturalist Society of the Central Atlantic States Inc.                 | \$12,500  |
| American Jewish Joint Distribution Committee                      | \$500    | Backyard Theater Ensemble Inc.   | \$1,569   |
| American Jewish World Service                                     | \$7,000  | Ball & Socket Arts   | \$5,904   |
| American Liver Foundation   | \$3,000  | Baltimore Museum of Art  | \$3,861   |
| American Lung Association of New England                          | \$3,000  | Barnard College of Columbia University   | \$5,000   |
| American Red Cross, Connecticut Chapter                           | \$24,194 | Beardsley Park Zoo   | \$250     |
| American Red Cross, National Headquarters                         | \$2,650  | Believe in Me Empowerment Corporation  | \$25,000  |
| American School for the Deaf                                      | \$9,534  | Bend the Arc — A Jewish Partnership for Justice                                | \$3,000   |
| American Symphony Orchestra League                                | \$2,659  | Benjamin Jepson School   | \$750     |
| American University   | \$5,000  | Berkshire United Way   | \$5,000   |
| Americans for Peace Now   | \$750    | Berkshire-Taconic Community Foundation   | \$5,000   |
| AmeriCares  | \$1,500  | Best Buddies   | \$266     |
| Amity & Woodbridge Historical Society Inc.                        | \$1,044  | Best Video Film & Cultural Center  | \$9,961   |
| Amity Regional High School  | \$1,690  | Beth-El Center Inc.  | \$32,538  |
| Amity Teen Center Inc.  | \$7,669  | Bethany Library Association  | \$3,000   |
| Amnesty International   | \$6,111  | Bethesda Nursery School  | \$3,228   |
| Animal Haven Inc.   | \$44,988 | Beulah Heights First Pentecostal Church  | \$626     |
| Annie Wright School   | \$1,000  | Beulah Land Development Corporation Inc.                                       | \$50,263  |
| Ansonia High School   | \$26,400 | BHcare   | \$120,474 |
| Ansonia Public Library  | \$3,311  | Birthright of the Valley   | \$78      |
| Ansonia Public Schools  | \$4,106  | Black Rock Food Pantry   | \$1,000   |
| Anti-Defamation League of B'Nai B'rith                            | \$550    | Booker T. Washington Academy   | \$29,261  |
| Apostle Immigrant Services  | \$18,381 | Boston University  | \$1,000   |
| APT Foundation Inc.   | \$10,315 | Botsford Historical Association Inc.   | \$43,941  |
| Architecture Resource Center Inc.                                 | \$17,001 | Bowling Green State University   | \$1,500   |
| Area Congregations Together Inc.                                  | \$9,714  | Boy Scout Troop 3 Derby  | \$250     |
| Area Cooperative Education Services (ACES)                        | \$25     | Boy Scouts of America, Connecticut Yankee Council                              | \$186,707 |
| Arte Inc.   | \$1,235  | Boys & Girls Club of Milford   | \$1,085   |
| Arthritis Foundation  | \$9,534  | Boys & Girls Club of New Haven   | \$119,679 |
| Arts Council of Greater New Haven                                 | \$34,020 | Boys & Girls Club of the Lower Naugatuck Valley                                | \$5,056   |
| Arts for Learning Connecticut Inc.                                | \$23,761 | Boys & Girls Village Inc   | \$3,364   |
| Artspace Inc.   | \$29,495 | Branford Community Foundation  | \$195,238 |
| ASPCA (American Society for the Prevention of Cruelty to Animals) | \$250    |  |           |

### ORGANIZATION AND PERMANENT ORGANIZATION ENDOWMENT FUNDS

Distribution from these types of revocable and non-revocable funds are disbursed to benefit the organization for which the fund was established.

### PREFERENCE FUNDS

Grants from preference funds address a donor's area of interest in the community. The Community Foundation's Board determines the grants that will have the most impact and fulfill the donor's intent.

### SCHOLARSHIP FUNDS

Grants from scholarship funds provide assistance to students for secondary and post-secondary education and training, and are made to the educational institution.

### UNRESTRICTED FUNDS

Grants from unrestricted funds address a broad range of local opportunities and needs. They are used to support Foundation leadership strategies, responsive grantmaking and The Great Give®.

\*a New Haven HealthyStart partner organization; includes contract funds



“There is increased opportunity to define our work differently at both the client and advocacy level.”

A Foundation Grantee

|   |           |
|---|-----------|
| Branford Eagle                                    | \$25      |
| Branford Early Childhood Collaborative            | \$25,000  |
| Branford Electric Railway Association             | \$19,500  |
| Branford Food Pantry Inc.                         | \$1,966   |
| Branford High School                              | \$36,890  |
| Branford Land Trust                               | \$2,500   |
| Bridgeport Rotary Club Foundation                 | \$195,000 |
| Bridges Healthcare Inc.                           | \$57,977  |
| Brown University                                  | \$14,500  |
| Brown University Annual Fund                      | \$500     |
| Bryant University                                 | \$2,000   |
| Bucknell University                               | \$625     |
| Bucksport Community Concerns                      | \$250     |
| Burroughs Community Center                        | \$1,000   |
| CALAHE  | \$22,000  |
| Calvin Hill Day Care                              | \$11,387  |
| Camp Hazen YMCA                                   | \$1,000   |
| Canal Dock Boathouse Inc.                         | \$1,065   |
| CancerCare Inc. — Connecticut Office              | \$10,000  |
| Capital for Change                                | \$3,451   |
| CARE  | \$1,200   |
| Career Resources Inc.                             | \$25,000  |
| Carleton College                                  | \$500     |
| Carnegie Mellon University                        | \$1,000   |
| Catholic Charities Archdiocese of Hartford        | \$27,026  |
| Catholic Charities Inc. — Archdiocese of Hartford | \$327     |
| Celotto Child Care Program at Wilbur Cross        | \$500     |
| Center Against Spouse Abuse Inc.                  | \$7,500   |
| Center for Children’s Advocacy                    | \$28,303  |
| The Center for Family Justice                     | \$20,000  |
| Center for Spirituality and Healing               | \$4,000   |
| Center Stage Theatre Inc.                         | \$53,909  |

|  |           |
|--|-----------|
| Central Connecticut Coast YMCA   | \$212,355 |
| Central Connecticut Coast YMCA, Hamden/North Haven Branch              | \$12,250  |
| Central Connecticut Coast YMCA, Soundview Family YMCA Branch           | \$5,101   |
| Central Connecticut Coast Young Mens Christian Association Inc         | \$27      |
| Central CT State University  | \$96,362  |
| Centro San Jose c/o Catholic Charities Inc.                            | \$2,000   |
| Chapel Haven Inc.  | \$12,425  |
| Charter Oak Cultural Center  | \$1,000   |
| Chatham Square Neighborhood Association                                | \$500     |
| Cheshire Historical Society  | \$6,609   |
| Cheshirepedia Inc.   | \$250     |
| Children in Placement of CT Inc. (Connecticut Youth Alliance)          | \$20,233  |
| Children Inc.  | \$14,895  |
| The Children’s Center of Hamden  | \$73,821  |
| Children’s Community Programs of CT Inc.                               | \$25      |
| Children’s Law Center of Connecticut                                   | \$50      |
| The Children’s Preschool   | \$2,851   |
| Children’s Trust Fund  | \$400     |
| Christ Church Parish of New Haven                                      | \$27,403  |
| Christ Episcopal Church  | \$50      |
| Christ Episcopal Church of Bethany                                     | \$6,676   |
| Christian Community Action   | \$82,789  |
| Christian Community Commission   | \$5,000   |
| Christian Counseling & Family Life Center                              | \$308     |
| Church of Christ Congregational  | \$14,330  |
| Church of the Redeemer   | \$300     |
| Church World Service   | \$2,131   |
| Circle Camps for Grieving Children                                     | \$8,600   |
| Circle of Care for Families of Children with Cancer Inc.               | \$101     |
| City Harvest Inc.  | \$1,500   |
| City of New Haven Health Department, Maternal & Child Health Division* | \$160,082 |
| City of New Haven, Department of Youth Services                        | \$1,000   |
| CitySeed Inc.  | \$8,806   |
| Citywide Youth Coalition Inc.  | \$1,602   |
| Civic Orchestra of New Haven   | \$4,683   |
| Clark University   | \$3,800   |
| The Clay Studio  | \$2,000   |
| Cleveland Institute of Music   | \$6,000   |
| Clifford W. Beers Guidance Clinic                                      | \$66,970  |

|   |           |
|---|-----------|
| CNAIUC Inc.   | \$750     |
| Coalition for a Better Wallingford                          | \$1,088   |
| Coalition for the Homeless                                  | \$1,800   |
| Collective Consciousness Theatre Inc.                       | \$1,000   |
| Columbia University   | \$500     |
| Columbia University — IJJS                                  | \$2,000   |
| Columbus House Inc.   | \$129,442 |
| Committee of Proprietors of Common and Undivided Lands      | \$50,000  |
| Common Cause  | \$10,000  |
| Community Action Agency of New Haven Inc.*                  | \$75,053  |
| Community Bonds Inc.  | \$32,500  |
| Community Dining Room                                       | \$7,556   |
| Community Health Network of CT Foundation Inc.              | \$3,706   |
| Community Mediation Inc.                                    | \$39,788  |
| Community Partners in Action                                | \$4,000   |
| Community Plates Inc.                                       | \$260     |
| Community Soup Kitchen                                      | \$14,840  |
| Compassion Club   | \$1,354   |
| Concepts for Adaptive Learning                              | \$8,577   |
| Congregation B’Nai Jacob                                    | \$1,684   |
| Congregation Beth El-Keser Israel                           | \$4,535   |
| Congregation Mishkan Israel                                 | \$3,259   |
| Congregations Organized for a New Connecticut               | \$15,601  |
| The Connecticut Academy of Arts and Sciences                | \$500     |
| Connecticut Appleseed Center for Law & Justice Inc.         | \$2,500   |
| Connecticut Association for the Performing Arts (CAPA)      | \$286,611 |
| Connecticut Association of Latinos in Higher Education Inc. | \$500     |
| Connecticut Audubon Society                                 | \$13,230  |
| Connecticut Center for Arts & Technology                    | \$428,421 |

|   |           |
|---|-----------|
| Connecticut Center for Child Development Inc.                 | \$25      |
| Connecticut Children’s Medical Center Foundation Inc.         | \$10,534  |
| Connecticut Children’s Museum                                 | \$13,028  |
| Connecticut Coalition for Achievement Now                     | \$503     |
| Connecticut Coalition to End Homelessness                     | \$606     |
| Connecticut College   | \$22,075  |
| Connecticut Council for Philanthropy                          | \$42,863  |
| Connecticut Department of Energy and Environmental Protection | \$13,000  |
| Connecticut Food Bank   | \$67,137  |
| Connecticut Forest & Park Association                         | \$1,663   |
| Connecticut Fund for the Environment                          | \$20,085  |
| Connecticut Health Investigative Team                         | \$4,729   |
| Connecticut Hospice Inc.                                      | \$27,532  |
| Connecticut Humane Society                                    | \$19,470  |
| Connecticut Immigrant Rights Alliance                         | \$10,000  |
| Connecticut Junior Republic                                   | \$2,364   |
| Connecticut Mental Health Center Foundation                   | \$59,465  |
| Connecticut News Project                                      | \$405,000 |
| Connecticut Public Broadcasting                               | \$3,300   |
| Connecticut State Conference of NAACP Branches                | \$250     |
| Connecticut State Golf Association                            | \$12,250  |
| Connecticut Students for a Dream                              | \$21,500  |
| Connecticut Trust for Historic Preservation                   | \$200,313 |
| Connecticut Veterans Legal Center                             | \$23,300  |
| Connecticut Voices for Children                               | \$80,792  |
| Connecticut Women’s Consortium Inc                            | \$44      |
| Connecticut Women’s Consortium Inc.                           | \$56,430  |
| Connecticut Women’s Education & Legal Fund                    | \$40,597  |
| Connecticut Women’s Hall of Fame                              | \$26      |

Coming Together on Leadership, Embracing Commonalities

On September 15, 2016, the Progreso Latino Fund hosted a panel discussion entitled *Celebrating Latino Leaders: Leading from Where You Are*. Panelists agreed that leadership is not about the position you hold at your job. It’s not about politics or religion or education, either. Leadership comes from a passion and confidence, grabbing hold of who you are, influencing others to do the same.



# COMMUNITY NOW

## Grants and Distributions continued

|  |           |  |          |
|--|-----------|--|----------|
| The Connection Fund Inc.   | \$1,458   | Derby Historical Society                                     | \$1,143  |
| ConnPIRG Education Fund  | \$3,075   | Derby Public Library   | \$503    |
| Conquer Cancer Foundation of the American Society of Clinical Oncology | \$500     | The Diaper Bank  | \$18,317 |
| The Conservation Fund  | \$500     | Ding Darling Wildlife Society                                | \$250    |
| The Consultation Center  | \$20,000  | Doctors Without Borders                                      | \$42,761 |
| Continuum of Care Inc.   | \$54,296  | Dominican Sisters of Peace                                   | \$1,752  |
| Cooperative Arts & Humanities High School                              | \$6,776   | Double Dog Rescue  | \$771    |
| Cornell Scott Hill Health Corporation*                                 | \$115,427 | Douglass Fund at the Association Alumnae of Douglass College | \$731    |
| Cornell University   | \$9,000   | Downtown Evening Soup Kitchen                                | \$30,731 |
| Council on Foundations   | \$22,850  | DPB Priesthood Association Dominican Friars Guild            | \$32,060 |
| Courage Kenny Foundation   | \$14,895  | The Dudley Foundation Inc.                                   | \$4,465  |
| The Cove Center for Grieving Children                                  | \$21,498  | Duke University  | \$1,000  |
| Creative Arts Workshop   | \$52,744  | Dwight Hall at Yale  | \$2,496  |
| Crohns & Colitis Foundation of America (Connecticut Chapter)           | \$62      | E.C. Scranton Memorial Library                               | \$1,263  |
| Crossroads Inc.  | \$27      | East Haven Food Pantry at Epiphany Church of Christ          | \$101    |
| CT Brownfield Land Bank  | \$1,104   | East Haven High School                                       | \$1,000  |
| CT Experiential Learning Center (CELC) Middle School                   | \$732     | East Haven Public Library Inc.                               | \$930    |
| CT Irish American Historical Society                                   | \$938     | East Haven United Inc.                                       | \$760    |
| CT Panthers Basketball   | \$500     | East Rock Institute Inc.                                     | \$19,808 |
| CT Parent Power  | \$250     | Easter Seals Goodwill Industries                             |          |
| CT Roundtable on Climate and Jobs                                      | \$2,000   | Rehabilitation Center Inc.                                   | \$10,830 |
| D.E.S.T.I.N.E.D to Succeed   | \$255     | Eastern Connecticut State University                         | \$38,164 |
| Davis Public Schools Education Foundation                              | \$3,000   | Eastman School of Music                                      | \$10,500 |
| Davis United Methodist Church  | \$18,000  | Ecoworks CT Inc.   | \$386    |
| Days for Girls   | \$250     | Edgerton Park Conservancy                                    | \$9,150  |
| Defenders of Wildlife  | \$14,430  | Edith B. Jackson Child Care Program Inc.                     | \$2,338  |
| Delta Foundation of Greater New Haven                                  | \$1,190   | EIR Urban Youth Boxing Inc.                                  | \$5,000  |
| Derby High School  | \$6,000   | Eli Whitney Museum Inc.                                      | \$3,122  |
|  |           | Elizabethan Club of Yale University                          | \$500    |

|  |           |
|--|-----------|
| Elm City ChamberFest   | \$15,469  |
| Elm City College Preparatory Middle School                         | \$11,000  |
| Elm City Cycling   | \$1,000   |
| Elm City Dance Collective Inc.                                     | \$6,139   |
| Elm City Girls' Choir  | \$991     |
| Elm City Internationals  | \$18,060  |
| Elm City Montessori School   | \$4,962   |
| Elm City Robo Squad  | \$724     |
| Elm Shakespeare Company  | \$10,695  |
| Elon University  | \$2,000   |
| Emerge Connecticut Inc.  | \$119,596 |
| Emergency Shelter Management Services Inc.                         | \$533     |
| Emmanuel Church  | \$3,000   |
| Emory University   | \$5,000   |
| Endicott College   | \$6,900   |
| Engineering and Science University Magnet School (ESUMS)           | \$10,000  |
| Engineers Without Borders, Yale Chapter                            | \$1,000   |
| Environment and Human Health Inc.                                  | \$73,533  |
| Environmental Defense Fund   | \$6,965   |
| Episcopal Church of St. Paul & St. James                           | \$4,836   |
| Equal Justice USA  | \$1,000   |
| Essex County Community Foundation, Andover Coalition for Education | \$3,500   |
| Ethnic Historical Archives Center of New Haven Inc.                | \$265     |
| The Eugene O'Neill Theater Center                                  | \$15,000  |
| Ezra Stiles College, (Yale University)                             | \$2,500   |
| Fair Haven Community Health Center*                                | \$88,440  |
| Fairfield University   | \$2,016   |
| Families In Crisis Inc.  | \$4,000   |
| Family Centered Services of CT                                     | \$26,025  |
| Family Renew Community   | \$500     |
| Farm & Wilderness Foundation                                       | \$3,000   |
| Farnam Neighborhood House  | \$50,060  |
| Feeding America  | \$2,000   |
| Fellowship Place   | \$94,266  |
| FGNHCC — Network for Public Education                              | \$17,084  |
| FINCA  | \$300     |
| First Church of Bethlehem  | \$19,085  |
| First Church of Christ New Haven                                   | \$100,810 |
| First Church of Christ New Haven, Ladies Home Missionary Society   | \$12,216  |
| First Church of Christ Woodbridge                                  | \$96,665  |

|   |           |
|---|-----------|
| First Congregational Church Day Care & Nursery Inc. of Cheshire | \$1,802   |
| First Presbyterian Church of 5th Avenue                         | \$500     |
| First Presbyterian Church of New Haven                          | \$17,214  |
| FISH of Greater New Haven Inc.                                  | \$50,799  |
| Fistula Foundation  | \$5,000   |
| Fit Haven   | \$336     |
| Florida State University Student Business Services              | \$2,150   |
| Focal Point Project   | \$2,500   |
| FOCUS   | \$1,000   |
| Foote School  | \$6,500   |
| Foote School Association Inc.                                   | \$10,000  |
| Fordham University  | \$2,000   |
| The Foundation Center   | \$7,130   |
| Foundation for the Advancement of Catholic Schools (FACS)       | \$525     |
| Foundation for the Arts and Trauma                              | \$12,825  |
| Foundation of the Greater New Haven Chamber of Commerce         | \$10,451  |
| Foundation to Promote Open Society                              | \$100,000 |
| Fractured Atlas   | \$999     |
| Frances Payne Bolton School of Nursing Annual Fund              | \$8,000   |
| Fresh Air Fund  | \$350     |
| Friends Center for Children Inc.                                | \$4,527   |
| Friends of Animals  | \$9,930   |
| Friends of Boulder Knoll  | \$290     |
| Friends of Case Memorial Library                                | \$1,877   |
| Friends of Cheshire Public Library                              | \$7,900   |
| The Friends of John Slade Ely House For Contemporary Art Inc.   | \$7,609   |
| Friends of the Ansonia Nature Center FANCI                      | \$1,552   |
| Friends of the New Haven Animal Shelter                         | \$7,814   |
| Friends of UNFPA  | \$1,720   |



### Called to Serve Immigrants

The “Victim to Victor” project at Apostle Immigrant Services (AIS) provides support for immigrant victims of violent crime seeking to obtain legal status through the U visa program. Under the Foundation’s Immigration Integration Strategy, AIS was awarded a \$26,000 multi-year grant for this program.



# COMMUNITY NOW

## Grants and Distributions continued

|   |           |   |           |
|---|-----------|---|-----------|
| The Fund for Johns Hopkins University, School of Medicine             | \$731     | Guide Dog Foundation for the Blind                      | \$9,587   |
| Fusion Steppers Drill Team & Drum Corp.                               | \$5,000   | Guilford A Better Chance Inc.                           | \$7,199   |
| Garden Club of New Haven  | \$13,715  | The Guilford Agricultural Society                       | \$1,550   |
| Gateway Community College   | \$39,789  | Guilford Art Center                                     | \$13,139  |
| Gateway Community College Foundation Inc.                             | \$65,145  | Guilford Center for Children                            | \$157     |
| Gaylord Hospital  | \$78,052  | Guilford Community Fund                                 | \$1,750   |
| The George Washington University                                      | \$2,500   | The Guilford Foundation                                 | \$129,761 |
| Georgetown University   | \$500     | Guilford Free Library Assoc.                            | \$3,948   |
| Georgia Tech Foundation   | \$604,157 | Guilford Garden Club                                    | \$800     |
| Gesell Institute of Child Development                                 | \$150,736 | Guilford High School                                    | \$7,975   |
| The Get in Touch Foundation   | \$4,090   | Guilford Interfaith Ministries                          | \$2,500   |
| Girl Scouts of Connecticut Inc.                                       | \$60,909  | Guilford Interfaith Ministries Inc.                     | \$927     |
| Giving Greater New Haven  | \$105,377 | Guilford Keeping Society Inc.                           | \$500     |
| Goddard College   | \$2,000   | Guilford Land Conservation Trust                        | \$6,582   |
| goNewHavengo  | \$3,000   | Guilford Preservation Alliance                          | \$500     |
| Good Shepherd Day Care Center   | \$4,000   | Guilford Social Services                                | \$1,900   |
| Goodspeed Musicals  | \$40,775  | Guilford Youth and Family Services                      | \$750     |
| Grace Episcopal Church  | \$20,000  | Guilmette Elementary School                             | \$1,000   |
| Grant Foundation for Hospital Albert Schweitzer                       | \$731     | Guns Down Books Up                                      | \$2,500   |
| Greater New Haven Business & Professional Association                 | \$3,303   | Habitat for Humanity of Greater New Haven               | \$31,174  |
| The Greater New Haven Cat Project                                     | \$6,662   | Halifax Urban Ministries                                | \$500     |
| Greater New Haven Community Chorus                                    | \$16,684  | Hamden Hall Country Day School                          | \$46,469  |
| Greater New Haven Coordinated Access Network                          | \$7,500   | Hamden High School                                      | \$56,323  |
| Greater New Haven Help Alliance Inc.                                  | \$773     | Hamden Land Conservation Trust                          | \$469     |
| Greater New Haven Labor History Association                           | \$79      | Hamden Library  | \$13,314  |
| The Greater New Haven Opportunities and Industrialization Center Inc. | \$3,800   | Hamden Symphony Orchestra Inc.                          | \$1,517   |
| GreenWave   | \$5,000   | Hamden Transition Academy                               | \$2,500   |
| Griffin Hospital  | \$7,136   | Hampton University                                      | \$6,000   |
| Growers Inc.  | \$284     | Hannah Gray Home Inc.                                   | \$5,183   |
| Guardian Ad Litem Services Inc.                                       | \$5,000   | The Hartford Family Worker                              | \$1,000   |
|   |           | Hartford Stage  | \$95,000  |
|   |           | Harvard College Fund                                    | \$1,000   |
|   |           | Harvard University                                      | \$1,500   |
|   |           | Hazelden Foundation                                     | \$15,000  |
|   |           | Healthy Eyes Alliance                                   | \$50,471  |
|   |           | Hebrew Burial & Free Loan Association of New Haven Inc. | \$160     |
|   |           | Heifer International                                    | \$1,531   |
|   |           | Helen Keller International                              | \$113,000 |
|   |           | High Hopes Therapeutic Riding Inc.                      | \$34,000  |
|   |           | High School in the Community                            | \$5,000   |
|   |           | Higher Heights Youth Empowerment Programs Inc.          | \$17,690  |

“The Community Foundation should ramp up its work to convene people from all over the region to talk about the issues.”

A Foundation Donor

# MORE THAN EVER

## Welcoming All Abilities

The Channel 3 Kids Camp opened its doors to kids with special needs two years ago; a multi-year grant awarded by The Community Foundation provided general operating support during the camp’s transition phase. Now, children of all developmental and economic ability can participate in year round recreational and educational programs that promote friendships, learning and growth.



|   |          |   |             |
|---|----------|---|-------------|
| Highville Charter School                  | \$358    | International Festival of Arts & Ideas                                  | \$139,226   |
| Hill House Senior Residence               | \$250    | International Medical Corps.  | \$2,500     |
| Hill Regional Career Magnet High School   | \$16,175 | International Physicians for the Prevention of Nuclear War              | \$731       |
| Hispanic Health Council                   | \$250    | International Rescue Committee  | \$43,500    |
| Hofstra University                        | \$1,000  | Ireland’s Great Hunger Museum Inc.                                      | \$1,000     |
| Hole in the Wall Gang Camp                | \$2,800  | IRIS — Integrated Refugee & Immigrant Services                          | \$74,015    |
| The Hollycroft Foundation                 | \$115    | James Blackstone Memorial Library                                       | \$2,151     |
| HomeHaven                                 | \$11,632 | James Hillhouse High School   | \$118,090   |
| Hope After Loss                           | \$4,499  | The Jane Coffin Childs Memorial Fund for Medical Research               | \$11,493    |
| Hopkins School                            | \$3,179  | Jane Goodall Institute for Wildlife Research Education and Conservation | \$1,000     |
| Horizons Inc.                             | \$27     | Jazz Haven Inc.   | \$1,000     |
| Horns for Kids                            | \$76     | Jewish Cemetery Association of Greater New Haven                        | \$250       |
| Housatonic Council, Boy Scouts of America | \$25,513 | Jewish Community Center of Greater New Haven                            | \$22,253    |
| Housatonic Valley Association Inc.        | \$26     | Jewish Family Service of New Haven                                      | \$52,121    |
| Howard University                         | \$1,000  | Jewish Federation of Greater New Haven                                  | \$17,906    |
| Hugo Kauder Society                       | \$126    | Jewish Home for Children  | \$792       |
| Human Rights First                        | \$5,100  | Jewish Senior Services  | \$1,500     |
| Humane Society of New York                | \$9,520  | Jewish Voice for Peace  | \$1,000     |
| Humane Society of the United States       | \$4,965  | John B. Pierce Foundation   | \$1,408,000 |
| Hyde Leadership School                    | \$5,000  | Joseph Slifka Center for Jewish Life at Yale                            | \$2,338     |
| Idaho Community Foundation — WRWCF        | \$1,075  | Joslin Diabetes Center  | \$1,000     |
| Immanuel Missionary Baptist Church        | \$3,545  | Julia Day Nursery of Ansonia Inc.                                       | \$157       |
| Inaugural Ball 2016                       | \$2,500  | Juneteenth Festival Inc.  | \$500       |
| Industrial Opportunities Inc.             | \$1,000  | Junior Achievement of Southwest New England Inc.                        | \$34,666    |
| INROADS New England Region                | \$707    | Junior Achievement of Western Connecticut Inc.                          | \$1,185     |
| Inspirica Inc.                            | \$3,000  | Junior League of Greater New Haven                                      | \$600       |
| Interfaith Volunteer Caregivers           | \$23,617 | JUNTA for Progressive Action  | \$146,290   |
| International Association of New Haven    | \$479    | Juvenile Diabetes Research Foundation                                   | \$1,000     |

\*a New Haven HealthyStart partner organization; includes contract funds

# COMMUNITY NOW

## Grants and Distributions continued

|  |           |  |          |
|--|-----------|--|----------|
| Katharine Hepburn Cultural Arts Center               | \$2,000   | Luther College                                 | \$1,000  |
| Keene State College                                  | \$1,500   | Lyman Hall High School                         | \$1,000  |
| The Kennedy Center Inc.                              | \$833     | Lyme Connection                                | \$15,000 |
| Kids HUGS Inc.                                       | \$2,500   | Madison Community Services, Inc.               | \$6,000  |
| Kids Of America's Heroes                             | \$78      | The Madison Foundation                         | \$2,500  |
| Kidz Konnection Inc.                                 | \$400     | Madison Historical Society                     | \$737    |
| Kitka Inc.   | \$500     | Maine Wilderness Watershed Trust               | \$2,000  |
| Kucetekela Foundation                                | \$500     | Making Headway Foundation                      | \$1,500  |
| Lawrence University                                  | \$1,000   | Malta Prison Volunteers                        | \$500    |
| LEAP   | \$70,414  | Manchester Community College                   | \$1,000  |
| Leeway Inc.  | \$28,070  | Marist College                                 | \$1,000  |
| Legacy Hopewell House Hospice                        | \$250     | Maritime Aquarium of Norwalk Inc.              | \$250    |
| Legacy Theatre                                       | \$9,144   | Mark T. Sheehan High School                    | \$12,342 |
| Leila Day Nurseries Inc.                             | \$53,520  | Marrakech Inc.                                 | \$18,895 |
| The Leukemia & Lymphoma Society, Connecticut Chapter | \$26      | Mary Lou Pursell Nursing Scholarship Fund Inc. | \$983    |
| Liberty Community Services Inc.                      | \$27,584  | Mary Wade Home                                 | \$1,408  |
| Life Haven   | \$2,068   | Masonic Charity Foundation                     | \$19,974 |
| Lifeline Corporation                                 | \$5,000   | Massachusetts Institute of Technology          | \$3,000  |
| Light And Life Foundation Inc.                       | \$250     | Massaro Community Farm Inc.                    | \$5,533  |
| Lighthouse International                             | \$9,534   | Master's Manna Inc.                            | \$308    |
| Literacy Volunteers of Greater New Haven             | \$27,489  | Master's Table Community Meals Inc.            | \$828    |
| Literacy Volunteers of Southern Connecticut          | \$7,428   | Maude Kerns Art Center                         | \$1,000  |
| Literacy Volunteers Valley Shore                     | \$1,074   | Mazon  | \$10,000 |
| LiveKind Inc.  | \$152     | McGill University                              | \$500    |
| Loaves & Fishes                                      | \$2,386   | Mediators Beyond Borders International         | \$90,000 |
| Long Wharf Theatre                                   | \$770,588 | Melville Charitable Trust                      | \$5,000  |
| Love146  | \$1,257   | Memorial Sloan-Kettering Cancer Center         | \$500    |
| Lower Naugatuck Valley Parent Child Resource Center  | \$4,280   | Mental Health Association of Connecticut Inc.  | \$800    |
| LULAC Head Start                                     | \$6,277   | Menunkatuck Audubon Society                    | \$6,000  |



### Gathering to Highlight Progress, Identify Next Steps

New Haven Healthy Start hosted *Strengthening Healthy Start Program Impacts* in July 2016. The convening brought together grantees from CT, MA and NY, government representatives and experts from across the country. Over three days, a variety of topics were covered including the relationship between health equity and birth outcomes, the impact of trauma on Healthy Start participants and the relationship of March of Dimes to Healthy Start’s work.

# MORE THAN EVER

“I’m asking myself: are the marches further dividing people because people are staying fixed in their views?”

#### A Foundation Donor

|   |           |
|---|-----------|
| Mercy Center at Madison   | \$6,873   |
| Merrimack College   | \$2,300   |
| Metropolitan Business Academy                                       | \$5,000   |
| Middlesex Community College   | \$3,500   |
| Mikey's Way Foundation  | \$1,000   |
| Milford Academy   | \$1,725   |
| Milford International Little League                                 | \$542     |
| Milford Prevention Council  | \$2,000   |
| The MILLA Project   | \$3,800   |
| Mitchell College  | \$938     |
| Mondavi Center at University of California                          | \$1,000   |
| Mooreland Hill School   | \$10,000  |
| Mount Holyoke College   | \$250     |
| Mount Saint Michael Academy   | \$3,500   |
| Mountain Laurel Waldorf School                                      | \$500     |
| Mountain School of Milton Academy                                   | \$2,000   |
| Muscular Dystrophy Association                                      | \$4,363   |
| Music Haven Inc.  | \$91,891  |
| Mutual Housing Association of South Central CT                      | \$15,000  |
| Mystic Seaport  | \$500     |
| NAACP Legal Defense and Educational Fund                            | \$6,500   |
| NAACP, Greater New Haven  | \$8,281   |
| Nation Drill Squad and Drum Corp.                                   | \$5,000   |
| National Alliance on Mental Illness, Connecticut                    | \$250     |
| National Art Museum of Sport  | \$1,282   |
| National Coalition of 100 Black Women Inc.                          | \$750     |
| National College of Natural Medicine                                | \$2,500   |
| National Humane Education Society                                   | \$4,965   |
| National Rowing Foundation  | \$1,500   |
| National Sorority of Phi Delta Kappa Inc.                           | \$100     |
| National Wildlife Federation  | \$10,730  |
| Natural Resources Defense Council                                   | \$9,800   |
| The Nature Conservancy  | \$6,000   |
| The Nature Conservancy of Connecticut                               | \$20,858  |
| Neighborhood Housing Services of New Haven                          | \$42,731  |
| Neighborhood Leadership Program Grants                              | \$39,425  |
| Neighborhood Music School Inc.                                      | \$213,995 |
| New England Institute of Technology                                 | \$2,500   |
| New England Mountain Bike Association — Central Connecticut Chapter | \$963     |
| New Haven Academy   | \$950     |

|   |           |
|---|-----------|
| New Haven Age Group Track Club  | \$1,000   |
| New Haven Alumnae Chapter of Delta Sigma Theta  | \$2,043   |
| New Haven Ballet  | \$7,395   |
| New Haven Bird Club   | \$2,753   |
| New Haven Board of Park Commissioners   | \$14,077  |
| New Haven Chamber Orchestra   | \$3,018   |
| The New Haven Chapter of Links Inc.   | \$750     |
| New Haven Chorale   | \$70,112  |
| New Haven Early Childhood Council   | \$25,000  |
| New Haven Ecology Project (Common Ground)   | \$15,558  |
| New Haven Family Alliance*  | \$72,396  |
| New Haven Farms   | \$11,780  |
| New Haven Folk Inc.   | \$1,797   |
| New Haven Free Public Library   | \$149,736 |
| New Haven Free Public Library Foundation  | \$5,319   |
| New Haven Green Fund Inc.   | \$58,010  |
| New Haven Healthy Start (includes funds for partner organizations and Responsible Fatherhood program) | \$911,567 |
| New Haven Hebrew Day School   | \$500     |
| New Haven Kiwanis Club  | \$25,280  |
| New Haven Land Trust Inc.   | \$127,421 |
| New Haven Legal Assistance Association Inc.   | \$120,324 |
| New Haven Museum and Historical Society   | \$837,827 |
| New Haven Oratorio Choir  | \$3,268   |
| New Haven Paint & Clay Club   | \$6,356   |
| New Haven Preservation Trust  | \$27,311  |
| New Haven Pride Center  | \$1,000   |
| New Haven Promise   | \$590,655 |
| New Haven Public School Foundation Inc.   | \$20,333  |
| New Haven Public Schools  | \$8,500   |

\*a New Haven Healthy Start partner organization; includes contract funds



|  |         |           |
|--|---------|-----------|
| New Haven Reads  | ●●●●    | \$50,116  |
| New Haven Rotary Charitable Scholarship Trust                  | ●       | \$1,000   |
| New Haven Scholarship Fund Inc.                                | ●●●●●●● | \$92,647  |
| New Haven Science Fair — Greater New Haven Chamber of Commerce | ●       | \$600     |
| New Haven Symphony Orchestra                                   | ●●●●●●● | \$565,210 |
| New Haven Urban Design League                                  | ●       | \$40,000  |
| New Haven Works  | ●       | \$15,000  |
| New Haven Youth Soccer Association                             | ●●      | \$1,349   |
| New Haven Youth Tennis Association                             | ●       | \$500     |
| New Haven Youth Tennis Education                               | ●●      | \$6,030   |
| New Haven/Leon Sister City Project                             | ●●●●    | \$3,395   |
| New Hope Destiny Inc.  | ●       | \$1,500   |
| New Israel Fund  | ●       | \$3,000   |
| New Reach*   | ●●●●●   | \$231,606 |
| New Urban Arts   | ●       | \$500     |
| New York Botanical Garden                                      | ●       | \$250     |

“It is not about taxes and regulation, but about growth, dynamism, and attracting young, talented people. There’s opportunity there.”

A Foundation Grantee

|                                    |    |          |
|------------------------------------|----|----------|
| New York Legal Assistance Group    | ●  | \$9,345  |
| New York Medical College           | ●  | \$5,000  |
| New York University                | ●● | \$3,000  |
| The Next Step Fund                 | ●  | \$1,000  |
| NHSO Foundation Inc.               | ●  | \$51,623 |
| North Branford High School         | ●  | \$750    |
| North Central Area Agency on Aging | ●  | \$600    |
| North Haven High School            | ●● | \$5,189  |
| North Haven Land Trust             | ●  | \$500    |

|  |       |             |
|--|-------|-------------|
| Northeast Connecticut Cancer Fund of DKH                         | ●     | \$300       |
| Northeast Organic Farming Association of Connecticut Inc.        | ●     | \$3,800     |
| Northwest Connecticut Community Foundation Inc.                  | ●     | \$2,689,486 |
| Northwestern University Kellogg School of Management Annual Fund | ●     | \$4,000     |
| Notre Dame High School   | ●     | \$11,463    |
| NTM Info & Research  | ●     | \$3,000     |
| Nuts About Health  | ●     | \$500       |
| Oakland University   | ●     | \$2,000     |
| Oceana   | ●     | \$1,000     |
| One Breath, One Hope Inc.  | ●●●   | \$541       |
| Online Journalism Project Inc.                                   | ●●●   | \$51,168    |
| Operation Fuel Inc.  | ●     | \$14,500    |
| Opportunity International  | ●     | \$2,500     |
| The Optimates Society  | ●     | \$1,164     |
| Orange Town Hall   | ●     | \$5,625     |
| Orchard House (Medical Adult Day Center)                         | ●●●●  | \$8,003     |
| Orchestra New England  | ●●●●  | \$2,219     |
| Orland Fire Department   | ●     | \$250       |
| Oxfam America  | ●     | \$33,200    |
| Oxford Historical Society Inc.                                   | ●●●   | \$60        |
| Pantochino Productions   | ●●●   | \$8,214     |
| Partnership for Strong Communities                               | ●●●   | \$80        |
| Peabody Museum of Natural History                                | ●●●●  | \$13,822    |
| Pequenas Ligas Hispanas de New Haven                             | ●●●●● | \$40,349    |
| The Perfect Blend Inc  | ●     | \$5,000     |
| The Pike School  | ●     | \$4,000     |
| Pivot Ministries Inc.  | ●     | \$250       |
| Planned Parenthood of Southern New England                       | ●●●●● | \$48,453    |
| Police Activity League of New Haven Inc.                         | ●●●   | \$690       |
| Port Orange Presbyterian Church                                  | ●     | \$2,500     |
| Precious Angels and Precious Jewels Club                         | ●     | \$5,000     |
| Presbyterian Church of Old Greenwich                             | ●     | \$16,000    |
| President and Fellows of Middlebury College                      | ●     | \$66,000    |
| Prestige Activism Youth & Leadership Development                 | ●     | \$2,000     |
| Princeton University   | ●●    | \$7,250     |
| Priscilla Maxwell Endicott Scholarship Fund                      | ●     | \$11,330    |
| Pro Bono Partnership   | ●     | \$15,000    |
| Project Access of New Haven                                      | ●●●●● | \$53,740    |
| Project HOPE — The People-to-People Health Foundation Inc.       | ●     | \$1,000     |

Walking in an Urban Oasis

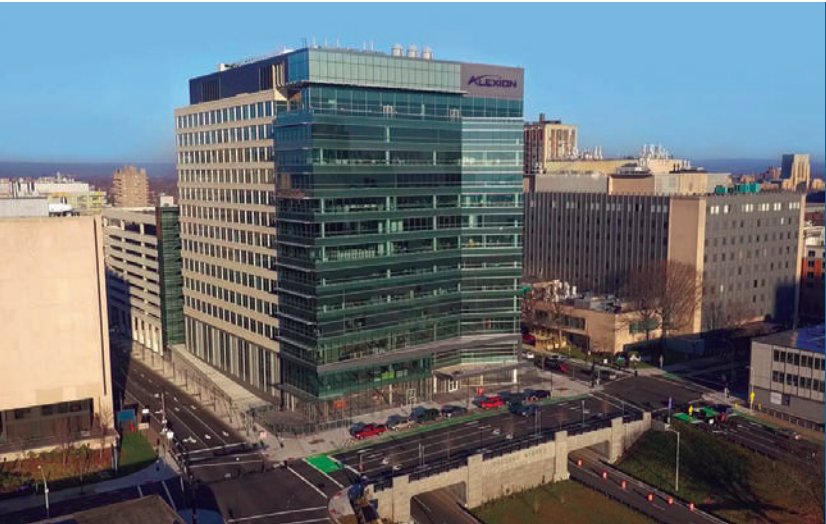
New signs guide visitors to the Quinnipiac Meadows Preserve. The signs provide an overview of the history, ecology, wildlife and terrain of the preserve. They were created through a partnership between the New Haven Land Trust and the Yale Peabody Museum, and funded in part with a grant from The Community Foundation’s Quinnipiac River Fund. Since it was created in 1990, the Fund has distributed over \$2.3 Million in grants to clean, preserve and protect the River.



|  |         |           |
|--|---------|-----------|
| Project MORE Inc.  | ●       | \$2,000   |
| The Prosperity Foundation                                      | ●●●●    | \$197,428 |
| Province of St. Augustine                                      | ●       | \$9,520   |
| Public Allies Connecticut                                      | ●●●●    | \$15,053  |
| Quinnipiac Business and Education Foundation Inc.              | ●●●●    | \$50      |
| Quinnipiac River Linear Trail Advisory Committee of Wlfd Corp. | ●       | \$5,000   |
| Quinnipiac River Watershed Association                         | ●●●●    | \$3,758   |
| Quinnipiac University  | ●●●●●   | \$81,207  |
| r Kids Inc.  | ●●●●●●● | \$36,113  |
| Rails-to-Trails Conservancy                                    | ●       | \$500     |
| Rain of Hope Inc.  | ●●●     | \$1,547   |
| Rape Crisis Center of Milford Inc.                             | ●●●     | \$12,520  |
| Re-Entry Ministry Inc.   | ●       | \$500     |
| Reach Out and Read   | ●●●●●   | \$15,151  |
| Reach Out Project  | ●●●     | \$50      |
| Read to Grow   | ●●●●●   | \$27,833  |
| Real Estate Educational Foundation Inc.                        | ●       | \$9,565   |
| Recreation Camp Inc.   | ●●●     | \$9,796   |
| Reformed Church of Highland Park                               | ●       | \$731     |
| Regional Data Cooperative, dba Data Haven                      | ●●●     | \$51,221  |
| Regional Hospice and Home Care                                 | ●●●     | \$63      |
| Regional Water Authority                                       | ●●●     | \$3,101   |
| Rensselaer Polytechnic Institute                               | ●       | \$3,500   |
| Rescue Fire Company #5   | ●       | \$4,761   |
| Rethinking Schools   | ●       | \$1,000   |
| Ridgefield Library Association                                 | ●       | \$1,500   |
| River Advocates of South Central CT                            | ●       | \$20,000  |
| Rochester Institute of Technology                              | ●       | \$9,450   |
| Romemu   | ●       | \$10,950  |

|   |       |          |
|---|-------|----------|
| Ronald McDonald House of CT Inc.                        | ●●●●  | \$5,500  |
| Russell Trust Association (RTA)                         | ●     | \$250    |
| Rutgers University Foundation                           | ●     | \$13,125 |
| Sacred Heart Academy                                    | ●●    | \$81,900 |
| Sacred Heart Church                                     | ●     | \$10,963 |
| Sacred Heart University                                 | ●     | \$1,688  |
| Sage College of Albany                                  | ●     | \$1,000  |
| The Sage School   | ●     | \$5,000  |
| Saint Ann Parish Church                                 | ●     | \$1,000  |
| Saint Anselm College                                    | ●     | \$500    |
| Saint Bernadette’s Catholic School                      | ●     | \$1,000  |
| Saint Brendan’s Church                                  | ●     | \$10,963 |
| Saint Francis & Saint Rose of Lima School               | ●●    | \$44,890 |
| Saint George Church                                     | ●     | \$300    |
| Saint George Church Men’s Club                          | ●     | \$250    |
| Saint John’s Episcopal Church                           | ●     | \$3,023  |
| Saint Joseph Parish — Angel Fund                        | ●     | \$500    |
| Saint Martin de Porres Academy                          | ●●●●● | \$59,125 |
| Saint Mary Saint Michael School                         | ●●●   | \$7,196  |
| Saint Patrick’s Church and Parish                       | ●     | \$10,963 |
| Saint Paul’s School                                     | ●     | \$250    |
| Saint Vincent de Paul Society of Shelton Inc.           | ●●●   | \$1,948  |
| The Salvation Army (East New Haven County Service Unit) | ●●●   | \$211    |
| The Salvation Army (Milford Service Unit)               | ●●●   | \$182    |
| Salvation Army, Adult Rehabilitation Center             | ●●●●  | \$9,313  |
| Salvation Army, Greater New York                        | ●     | \$1,500  |
| Salvation Army, Greater Valley Corps                    | ●●●   | \$405    |
| Salvation Army, Territorial Headquarters                | ●     | \$9,520  |
| San Francisco Food Bank                                 | ●     | \$5,000  |

|  |          |   |           |
|--|----------|---|-----------|
| Sanctuary For Families Inc.                | \$500    | Simmons College   | \$750     |
| SARAH Foundation                           | \$43,181 | Sister's Journey Inc.                                   | \$500     |
| Save the Children Federation               | \$9,000  | Site Projects Inc.                                      | \$8,019   |
| The School for Ethical Education           | \$242    | Sleeping Giant Park Association                         | \$1,250   |
| Send International                         | \$1,500  | The Smile Train   | \$1,000   |
| Seton Hall University                      | \$1,500  | Smith College   | \$13,580  |
| Seymour High School                        | \$6,890  | Social Communication Foundation                         | \$159     |
| Seymour Historical Society                 | \$20,368 | Solar Youth   | \$74,899  |
| Seymour Pink Inc.                          | \$5,434  | SOUND Affect International                              | \$994     |
| Seymour Public Library                     | \$40,724 | Sound School  | \$5,000   |
| Shalom United Church of Christ             | \$4,500  | South Central Connecticut Regional Water Authority      | \$3,500   |
| Shelton Ct Gaels Alumni Association        | \$708    | South Central Regional Economic Development Corporation | \$1,488   |
| Shelton Economic Development Corporation   | \$1,483  | Southern Connecticut State University                   | \$205,339 |
| Shelton High School Robotics Team          | \$10,086 | Southern Connecticut State University Foundation Inc.   | \$2,000   |
| Shelton Historical Society Inc.            | \$2,252  | Southern CT State University                            | \$11,700  |
| Shelton Land Conservation Trust            | \$609    | Southern Poverty Law Center                             | \$20,200  |
| Shelton Volunteer Fire Co#4 Pine Rock Park | \$603    | Southington High School                                 | \$650     |
| Shepherd Glen School PTA                   | \$433    | Southwestern Area Health Education Center Inc.          | \$402     |
| Shepherds Inc.                             | \$50     | Spanish Community of Wallingford                        | \$11,910  |
| Shoreline Arts Alliance                    | \$9,438  | Special Olympics of Connecticut                         | \$2,500   |
| Shoreline Greenway Trail Inc.              | \$11,094 | Sportsometry  | \$25,000  |
| Shoreline Village CT                       | \$31,801 | Spring Glen Church Nursery School                       | \$353     |
| Short Beach Union Church                   | \$5,000  | Springfield College                                     | \$3,000   |
| Short Term Emergency Aid Committee         | \$2,000  | Springs Learning Center                                 | \$7,375   |
| Shriners Hospitals for Children            | \$19,974 | Square Foot Theatre Company                             | \$5,925   |
| Siena College                              | \$1,000  | Squash Haven Inc.                                       | \$72,549  |
| Silicon Valley Community Foundation        | \$1,000  | Stamford Hospital Foundation                            | \$1,000   |
| Silvermine Arts Center                     | \$7,344  | Stanford Fund (1970)                                    | \$250     |
| SIM USA                                    | \$250    | Stanford University                                     | \$7,000   |



### Rewarding and Recognizing Good Work

Alexion Pharmaceuticals and The Foundation partnered in 2016 on a charitable giving initiative to support 30 local nonprofits dedicated to strengthening the region. The program coincided with Alexion’s move to its new global headquarters in New Haven and demonstrated the Company’s commitment to developing productive partnerships within the communities where employees live and work. Alexion granted a \$1,000 each day to a local nonprofit over 30 days.

|  |          |
|--|----------|
| Stanford University, Center of Deliberative Democracy            | \$65,000 |
| Staples Tuition Grants   | \$16,000 |
| Starfishgirl Anti-Stalking Campaign                              | \$3,274  |
| State Education Resource Center Foundation                       | \$1,000  |
| Stonehill College  | \$1,000  |
| Stony Creek Cemetery Association Inc.                            | \$4,761  |
| Student Parenting and Family Services Inc.                       | \$21,771 |
| Suffield Academy   | \$7,350  |
| Suffolk University   | \$1,500  |
| Sullivan Basketball Academy Inc.                                 | \$2,000  |
| Survivorship NOW/DHVT  | \$500    |
| TEAM Inc.  | \$6,354  |
| Temple Beth El   | \$1,545  |
| Temple Emanuel of Greater New Haven                              | \$1,424  |
| Theater New Haven Inc.   | \$3,000  |
| Theta Epsilon Omega Chapter of Alpha Kappa Alpha                 | \$1,000  |
| Thirteen — WNET  | \$1,000  |
| This Child Here  | \$500    |
| Thompson Child & Family Focus                                    | \$250    |
| Three Rivers Community College                                   | \$3,500  |
| Tommy Fund for Childhood Cancer (Tommy Fund Inc.)                | \$800    |
| The Towers Foundation  | \$5,174  |
| Town of Hamden   | \$45,000 |
| Town of Old Saybrook, Social Services                            | \$2,400  |
| Trauma Recovery EMDR-Humanitarian Assistance Programs            | \$3,000  |
| Treasured Time   | \$800    |
| The Treehouse Foundation Inc.                                    | \$2,000  |
| Trinity Church on the Green                                      | \$17,619 |
| Trinity College  | \$462    |
| Trinity Lutheran Church  | \$92,986 |
| Trinity School   | \$2,328  |
| True Colors Inc. Sexual Minority Youth and Family Services of CT | \$102    |
| The Trust for Public Land  | \$1,000  |
| Tufts University   | \$1,000  |
| Turning Point Center of Chittenden County                        | \$3,000  |
| U.S. Naval Academy Foundation                                    | \$600    |
| Ulysses S. Grant Foundation                                      | \$40,718 |
| UNICEF   | \$1,200  |
| Unidad Latina Accion   | \$25,000 |
| Union College  | \$500    |
| United Hospital Fund   | \$1,000  |

“Consider and promote inclusive economic development that incorporates workforce development, childcare, transportation, long term growth and shared prosperity.”

#### A Foundation Grantee

|   |             |
|---|-------------|
| United Negro College Fund                         | \$5,000     |
| United Way of Greater New Haven                   | \$454,502   |
| United Way of New York City                       | \$1,000     |
| Unity College                                     | \$6,900     |
| Universal Health Care Foundation of Connecticut   | \$1,191,000 |
| University Glee Club of New Haven                 | \$2,500     |
| University of Arizona                             | \$4,100     |
| University of Bridgeport                          | \$4,047     |
| University of Chicago, Office of College Aid      | \$500       |
| University of Chicago, The College Fund           | \$1,250     |
| University of Connecticut                         | \$458,902   |
| University of Connecticut Foundation Inc.         | \$581       |
| University of Delaware-Student Financial Services | \$625       |
| University of Hartford                            | \$7,453     |
| University of Maryland                            | \$6,000     |
| University of Michigan                            | \$5,500     |
| University of Michigan, University Library        | \$500       |
| University of Minnesota Fdn/School of Nursing     | \$1,000     |
| University of Missouri, Columbia                  | \$500       |
| University of New England                         | \$1,000     |
| University of New Hampshire                       | \$6,000     |
| University of New Haven                           | \$687,357   |
| University of New Haven, Department of Biology    | \$23,500    |
| University of North Carolina-Chapel Hill          | \$2,000     |
| University of Pennsylvania                        | \$1,000     |



“We must focus on making things better for the people we serve now by asking ourselves, ‘What can we do differently to improve our results?’”

A Foundation Grantee

|   |  |             |
|---|--|-------------|
| University of Rhode Island                              |  | \$3,300     |
| University of Saint Joseph                              |  | \$3,500     |
| University of Southern California                       |  | \$5,000     |
| University of Vermont, Student Financial Services       |  | \$2,300     |
| Urban Hope  |  | \$2,000     |
| Urban League of Southern Connecticut                    |  | \$613       |
| Urban Resources Initiative                              |  | \$37,444    |
| URU, The Right to Be Inc.                               |  | \$4,750     |
| VA Charters Inc.  |  | \$670       |
| Valley Arts Council                                     |  | \$105       |
| The Valley Community Foundation                         |  | \$1,139,237 |
| Valley Independent Sentinel (Online Journalism Project) |  | \$80,696    |
| Valley Shakespeare Festival                             |  | \$3,063     |
| Valley United Way                                       |  | \$6,889     |
| Vantage Group Inc.                                      |  | \$31,490    |
| Varick Center for Empowerment                           |  | \$3,000     |
| Varick Memorial A.M.E. Zion Church                      |  | \$7,559     |
| Vassar College  |  | \$5,100     |
| Vermont Wish Project                                    |  | \$500       |
| Victim Rights Center of Connecticut                     |  | \$1,042     |
| Village Improvement Association                         |  | \$462       |
| Villanova University                                    |  | \$2,000     |
| Visiting Nurse Association of South Central Connecticut |  | \$43,590    |
| Visiting Nurse Services of CT                           |  | \$1,000     |
| VISTA Life Innovations                                  |  | \$200       |
| VNA Community Healthcare                                |  | \$13,035    |
| Volunteer Services Center Inc.                          |  | \$33,324    |

|   |  |          |
|---|--|----------|
| Wallingford Chorus  |  | \$52     |
| Wallingford Family YMCA   |  | \$132    |
| Wallingford Public Library  |  | \$1,094  |
| Walnut Hill School  |  | \$6,600  |
| Walter Pop Smith League — New Haven                               |  | \$5,709  |
| Ward-Heitmann House Museum Inc.                                   |  | \$3,205  |
| WaterAid America Inc.   |  | \$6,000  |
| The Watershed Fund Inc.   |  | \$2,600  |
| The Watershed Partnership Inc.                                    |  | \$25     |
| Wentworth Institute of Technology                                 |  | \$2,500  |
| Wesleyan University   |  | \$2,938  |
| West Haven Child Development Center                               |  | \$23,088 |
| West Haven Community House  |  | \$28,729 |
| West Haven High School  |  | \$26,359 |
| West Haven Historical Society                                     |  | \$462    |
| Western Connecticut State University                              |  | \$43,097 |
| Western New England Psychoanalytic Institute                      |  | \$5,696  |
| Western Reserve Historical Society                                |  | \$500    |
| Westminster School  |  | \$250    |
| Westport Country Playhouse  |  | \$64,075 |
| Westport Library Association                                      |  | \$5,000  |
| Westville Community Nursery School Inc.                           |  | \$458    |
| Westville Synagogue   |  | \$500    |
| Westville Village Renaissance Alliance                            |  | \$6,500  |
| WHEAT Inc.  |  | \$7,579  |
| Wheaton College   |  | \$1,000  |
| Where The Love Is Inc.  |  | \$7,829  |
| The Whitney Players Theater Company Inc.                          |  | \$6,973  |
| Whitneyville Cultural Commons                                     |  | \$2,849  |
| Whitneyville United Church of Christ                              |  | \$7,320  |
| Wilbur Cross High School  |  | \$7,000  |
| Wildlife Conservation Society                                     |  | \$1,500  |
| Wilton Education Foundation                                       |  | \$500    |
| Wilton Land Conservation Trust                                    |  | \$250    |
| Wilton Library Association  |  | \$750    |
| Wint Filipek Sr. Memorial Tennis Tournament/Scholarship Fund Inc. |  | \$250    |
| WMNR Fine Arts Radio  |  | \$1,958  |
| WNPR-FM   |  | \$365    |
| WNYC — New York Public Radio                                      |  | \$750    |
| Women and Families Center Inc.                                    |  | \$250    |
| Women and Family Life Center                                      |  | \$42,251 |

|   |  |           |
|---|--|-----------|
| Women of Power Network Inc.                             |  | \$500     |
| Women's Center of Greater Danbury, CT                   |  | \$2,500   |
| Women's Health Research at Yale                         |  | \$76,234  |
| Woodbridge Town Library                                 |  | \$3,311   |
| The Woodhall School                                     |  | \$1,000   |
| Woods Hole Research Center                              |  | \$1,500   |
| Wooster Square Conservancy Inc.                         |  | \$500     |
| Worcester Polytechnic Institute                         |  | \$2,300   |
| World Wildlife Fund                                     |  | \$11,019  |
| WPKN-FM,89.5  |  | \$607     |
| WSHU Public Radio                                       |  | \$1,316   |
| Xavier High School                                      |  | \$1,400   |
| Yale Center for British Art                             |  | \$250     |
| Yale Club of New Haven                                  |  | \$3,104   |
| Yale Law School   |  | \$741     |
| Yale New Haven Hospital, Office of Development          |  | \$2,949   |
| Yale New Haven Hospital, Saint Raphael Campus           |  | \$25,130  |
| Yale New Haven Hospital*                                |  | \$354,422 |
| Yale University   |  | \$500     |
| Yale University Art Gallery                             |  | \$9,710   |
| Yale University Collection of Musical Instruments       |  | \$4,254   |
| Yale University Department of Athletics                 |  | \$500     |
| Yale University Grant & Contract Administration         |  | \$30,200  |
| Yale University Library                                 |  | \$9,723   |
| Yale University Library, Sterling Memorial              |  | \$500     |
| Yale University Office of Development                   |  | \$635,375 |
| Yale University Office of New Haven and State Affairs   |  | \$6,062   |
| Yale University School of Drama, Yale Repertory Theatre |  | \$35,200  |

|  |  |           |
|--|--|-----------|
| Yale University School of Management                                   |  | \$750     |
| Yale University School of Medicine                                     |  | \$266     |
| Yale University School of Medicine, Cancer Center                      |  | \$176,974 |
| Yale University School of Medicine, Child Study Center                 |  | \$1,731   |
| Yale University School of Medicine, Department of Pediatrics           |  | \$320     |
| Yale University School of Medicine, Orthopaedics and Rehabilitation    |  | \$31,025  |
| Yale University School of Medicine, Plastic and Reconstructive Surgery |  | \$20,000  |
| Yale University School of Music  |  | \$307     |
| Yale University School of Nursing                                      |  | \$500     |
| Yale University Women's Organization                                   |  | \$12,049  |
| YMCA-Friends of Boys   |  | \$10,351  |
| Yoga4Change  |  | \$9,843   |
| Yolo Food Bank   |  | \$3,000   |
| Young Life of Greenwich  |  | \$250     |
| Young Mens Institute Library   |  | \$18,289  |
| Youth Continuum Inc.   |  | \$56,828  |
| Youth Forum Maine  |  | \$608     |
| Youth Without Limits   |  | \$1,800   |
| Zack's Place   |  | \$1,000   |
| Zygote Press   |  | \$250     |

Achieving Success on the Field and in the Classroom

The New Haven-based Elm City Internationals combines high-level soccer training with mentoring and college preparation tutoring for low-income immigrant and refugee students. Elm City Internationals has received funding under The Foundation’s Immigration Integration Strategy and through The Great Give®.





# COMMUNITY NOW

## Professional Advisors\*

The Foundation works closely with area attorneys, bankers, accountants and financial planners, including our professional advisor partners listed below, to share our knowledge of local charitable organizations and options for giving. In 2016, The Foundation launched the *Custom Investment Partnership Program* providing professional advisors an additional way to remain involved in fulfilling their clients’ charitable goals by maintaining their investment advisory role over their client’s assets.



Deborah Abildsoe  
*GBS Wealth Management*

Edward “Ted” Almy Jr.  
*The Almy-Roberts Group*

Donald W. Anderson  
*Brenner, Saltzman & Wallman LLP*

Stephen August  
*UBS Financial Services Inc.*

Helene Augustine, CTFA  
*Wells Fargo Private Bank*

Greg R. Barringer, Esq.  
*Reid and Riege PC*

Patricia R. Beauregard, Esq.  
*Cummings & Lockwood LLC*

Thomas Beirne III, CFP  
*Halsey Associates*

Andrew Boone  
*UBS Financial Services Inc.*

Stearns J. Bryant Jr.  
*Nugent & Bryant*

James P. Carley Jr.  
*BNY Mellon Wealth Management*

Karen L. Clute, Esq.  
*Wiggin & Dana, LLP*

William S. Colwell, Esq.  
*Parrett, Porto, Parese & Colwell PC*

Timothy W. Crowley  
*Crowley Law Offices*

Christine L. Curtiss, Esq.  
*Cohen & Thomas*

Elwood B. Davis  
*Northeast Financial Consultants Inc.*

Lisa Nachmias Davis  
*Davis, O’Sullivan & Priest LLC*

Kevin J. DiAdamo, Esq.  
*Law Office of Kevin J. DiAdamo, Esq.*

Timothy Dillon, Esq.  
*Sheehy & Dillon*

Richard J. DiMarco  
*Cohen & Wolf PC*

Victoria DiSesa, Esq.  
*DiSesa & DiSesa*

Stan Dombroski, Esq.  
*Dombroski Hillis LLC*

John H. Driscoll Jr., JD, LLM, CFP®  
*Webster Private Bank*

Christian Edmonds, Esq.  
*Christian P. Edmonds PC*

Barbara Ellinghaus  
*Morgan Stanley Smith Barney*

Theodore F. Ells, Esq.  
*Theodore F. Ells Law Office*

James E. Fischer, Esq.  
*Fischer & Fischer*

Norman F. Fishbein  
*Fishbein Law Firm LLC*

Norman Forrester, CRPC  
*Merrill Lynch Wealth Management*

Colin M. Gershon, Esq.  
*Colin M. Gershon Attorney at Law*

Christopher Getman  
*Fairfield, Bush & Co.*

Marshal D. Gibson, Esq.  
*Law Offices of Marshal D. Gibson PC*

John D. Gordon, CPA  
*Donald L. Perlroth & Company*

Frances B. Granquist, Esq.  
*The Pellegrino Law Firm PC*

Paul Greenberg  
*Ritch, Greenberg & Hassan PC*

George Guertin, Esq.  
*Guertin & Guertin LLC*

Michael Gulish, CFP  
*LPL Financial*

Michael Haggerty  
*UBS Financial Services Inc.*

Elizabeth R. Hartmayer  
*Merrill Lynch Investment Managers*

Geoffrey A. Hecht  
*Caplan & Hecht LLC*

Kimberly Hurd  
*Benjamin F. Edwards & Co.*

Thomas L. Hutchison  
*Merrill Lynch, The GKH Group*

David W. Kesner, Esq.  
*Wiggin & Dana LLP*

Hon. John Keyes  
*Probate Judge, New Haven*

Charles C. Kingsley, Esq.  
*Wiggin & Dana LLP*

Charles F. Kreitler  
*Kreitler Financial*

Robert P. Kreitler  
*Kreitler Financial*

David Ladd  
*Ladd Capital Management*

Frederick P. Leaf, Esq.  
*Frederick P. Leaf Attorney at Law*

Donna Levine, Esq.  
*Law Office of Donna R. Levine*

Barbara B. Lindsay, Esq.  
*Barbara B. Lindsay LLC*

Ingi-Mai Loorand, Esq.  
*Neubert, Pepe & Monteith PC*

Pamela J. Matocha, CPA  
*T.M. Byxbee Company PC*

Sheldon A. Messinger, Esq.  
*Law Offices of Sheldon Messinger*

Francis H. Michaud Jr., CPA, CGMA  
*Michaud, Accavallo, Woodbridge & Cusano LLC*

Joan C. Molloy, Esq.  
*Loughlin FitzGerald PC*

Martha Murray, Esq.  
*Martha Murray, Attorney-at-Law*

Lisa Newfield  
*Murtha Cullina LLP*

Charles Noble III  
*Noble Wealth Advisors*

Susan B. Nobleman  
*Gesmonde, Pietrosimone & Sgrignari LLC*

Darin L. Offerdahl, MBA, CPA  
*Michaud, Accavallo, Woodbridge & Cusano LLC*

Bette Lynn Paez, CFP  
*Bette Lynn Paez LLC*

Gregory J. Pepe, Esq.  
*Neubert, Pepe & Moneith PC*

Matthew R. Peterson  
*Carmody Torrance Sandak & Hennessey LLP*

Henry T. Petry, CLU, ChFC  
*Henry T. Petry, CLU, ChFC*

Louis R. Piscatelli  
*Withers Bergman LLP*

Kathy Priest, Esq.  
*Davis, O’Sullivan & Priest LLC*

Diane D. Ruben  
*Winnick, Ruben, Hoffnung, Peabody & Mendel LLC*

Michael D. Saffer, Esq.  
*The Pellegrino Law Firm PC*

Stephen L. Saltzman, Esq.  
*Brenner, Saltzman & Wallman LLP*

Anthony Santore, CPA  
*Beers, Hamerman, Cohen & Burger, PC*

Steven D. Sax  
*Merrill Lynch, Pierce, Fenner & Smith Inc.*

David R. Schaefer, Esq.  
*Brenner, Saltzman & Wallman LLP*

Irving S. Schloss, Esq.  
*Murtha Cullina LLP*

Anthony Scillia  
*Marcum LLP*

Sandra Vigliotti Senich  
*U.S. Trust, Bank of America*

Fred D. Sette, Esq.  
*Sette & Parnoff, PC*

Fay Sheppard, CRPC®, MBA  
*Wells Fargo Advisors*

Michael I. Silverberg, CLU, ChFC  
*Lindberg & Ripple*

Mark Sklarz, Esq.  
*Green & Sklarz LLC*

Laura Sklaver, Esq.  
*Susman Duffy & Segaloff PC*

Daniel M. Smith, JD, CFBS, AEP, CLTC, SCP  
*Daniel M. Smith & Associates*

Ronald A. Soccoli Jr.  
*Brenner, Saltzman & Wallman LLP*

Gregory J. Stamos, Esq.  
*Law Office of Gregory J. Stamos*

Fred Stanek, Esq.  
*Welch, Teodosio & Stanek*

Thomas M. Sutnik, Esq.  
*Law Offices of Thomas Sutnik*

Salvatore Tartaglione  
*The Aegis Group*

Dominick J. Thomas Jr.  
*Cohen & Thomas*

Marilyn N. Toland, Esq.  
*Toland Law Firm*

Alan J. Tyma, Esq.  
*Ryan & Tyma LLP*

Paul A. Veiga, CFP  
*U.S. Trust, Bank of America*

John H. Welch Jr.  
*Welch, Teodosio, Stanek & Blake LLC*

Thomas J. Welch  
*Welch, Teodosio, Stanek & Blake LLC*

Shelby Wilson  
*Berchem, Moses & Devlin PC*

Karen E. Yates  
*LeClairRyan*

John J. Zaprzalka, CPA  
*Apicella, Testa & Company PC*

### Building Homes, Building Community

Habitat for Humanity of Greater New Haven was founded in 1986. The Community Foundation supplied the organization’s first grant, which was used to hire a professional carpenter to direct the volunteer workers and to work alone when there were no volunteers available. Since being created, Habitat for Humanity has built or rehabilitated more than 100 homes, providing homeowners with new skills and contributing to the stability of our community.





# COMMUNITY NOW

## Nettie J. Dayton Circle

**Nettie Dayton Circle members are visionaries who share a common goal of creating reliable funding streams that support Greater New Haven’s changing needs. By sharing their intention to make a bequest to The Foundation, these individuals ensure causes and nonprofits supported in life will remain buoyed after death. They will one day join with 240 others who have established permanent funds by bequest to benefit our community.**



- |  |   |                                   |                                 |
|--|---|-----------------------------------|---------------------------------|
| Anonymous (24)                         | Tony Cafiero & Heather Rife                   | Christopher & Toddie Getman       | Robert* & Joyce Mailhouse       |
| Elaine R. Anderson                     | Mary Carey                                    | Lindy Lee Gold                    | Jean B. & M. Anne Mauro         |
| Lisa F. Arpaia, Esq.                   | Barbara W. Carlson                            | Ruth B. Grannick                  | Carolyn M. Mazure               |
| Louis G. Audette II                    | Elizabeth Ann Ceccarelli                      | Henry S. Harrison                 | Phyllis McDowell                |
| Henry E.* & Nancy H. Bartels           | Phyllis E. Ceccarelli                         | John & Lesley Higgins-Biddle      | Marcia Mersey                   |
| Myrna F. Baskin                        | Peter Ciardiello                              | Ralph C. Jones                    | Maria Mojica & Edgar Colon      |
| Rita D. Berkson & Randolph B. Reinhold | Brad Collins & Nancy Clayton                  | Annie Garcia Kaplan               | Carol Nardini                   |
| The Berry Hulin Family                 | William S. Colwell                            | James Kasper                      | Minot & Alcyn Nettleton         |
| Carla A. Birmingham                    | Bob & Mary Beth Congdon                       | John P.W. Kelly                   | Barbara Nicolazzo               |
| Richard Blacher                        | Virginia Galpin Crossley* & Erskine Crossley* | Frank Kenna Jr.* & Joan Kenna     | Jim & Mimi Niederman            |
| Pamela C. Boller                       | Ann S. Dahl*                                  | John D. Kernan Jr. & Karen Kernan | David O’Sullivan                |
| Richard J. & Joan Bonomi               | Robert & Priscilla Dannies                    | Harvey* & Ruth Koizim             | Maryann Ott                     |
| Dr. Harold D. & Maureen L.* Bornstein  | Elizabeth Demir                               | Edward Konowitz                   | Margaret L. Ottenbreit          |
| Robert & Kathleen Bradley              | Ann Pecora Diamond                            | David A. Krett Jr.                | Cynthia Parker                  |
| Jay Bright                             | Severio & Janice Fodero                       | William & Carolyn Lieber          | Fred J. Pasqualoni              |
| William Brink                          | Dr. Susan Fowler                              | Lawrence & Susan Liebman          | Barbara Pearce & Norman Fleming |
|  |   | Bruce R. Lively                   |                                 |

# MORE THAN EVER

- |                                       |                                  |
|---------------------------------------|----------------------------------|
| Catherine P. & Edward* Petraiuolo Jr. | Patsy Taylor                     |
| Dagobert & Nancy Pfeiffer             | Marcia & Tom Turner              |
| Katharine C. Pierce                   | Anne Rodrigues Voloshin          |
| Ed & Margie Pikaart                   | Jeffery T. Wack                  |
| Angela G. Powers                      | Patricia L. Wales                |
| Douglas W. Rae                        | Glenn & Dotty Weston-Murphy      |
| Jean M. Richards                      | Vivien K. White                  |
| Patrick B. Rowland & Lisa A. Kwesell  | Mary Elizabeth Wiedersheim       |
| Shelly & Richard Saczynski            | Kimberly P. Williams Family Fund |
| David R. Schaefer                     | Pug & Dee Winokur                |
| Irene Scheld                          | George Zdru                      |
| Judith Schurman                       |                                  |
| Mr. and Mrs. Anthony P. Scillia       |                                  |
| Jane Steidley Shaw                    |                                  |
| Teresa M. Sirico                      |                                  |
| Carol Lynn Sirot                      |                                  |
| Jane Snaider                          |                                  |
| Kerala & Richard Snyder               |                                  |
| Sara R. Stadler                       |                                  |

\*indicates deceased

**“We must connect the dots and tell people about the collective impact of our organizations.”**

A Foundation Grantee

### Building Connections, Securing a Brighter Future

Thousands of foreign-born residents are better able to navigate their daily tasks and integrate into the community because they improved their English skills with Literacy Volunteers of Southern Connecticut. Adult students come with a wide range of English language skills. Support from The Community Foundation and others allows tutoring to be offered at no cost.



# COMMUNITY NOW

## Volunteers

Throughout the year, our volunteers contribute vast amounts of time and skill to help us advance our mission. Each brings unique perspectives and experiences that represent the very best of our community and are amplified when blended together. We remain grateful and inspired by their deep-rooted commitment to this place we call home.



|                     |                        |                           |                   |                     |                     |
|---------------------|------------------------|---------------------------|-------------------|---------------------|---------------------|
| Gardner Abbott      | Richard Baxter         | Kiley Cappetta            | Kathleen Cooney   | Diana Desmornes     | Susan Garcia Nofi   |
| Marie Acquavita     | Ruby Belton-White      | Alicia Caraballo          | Sylvia Cooper     | Carlos Diaz         | Denis Garvey        |
| Sharmay Adams       | Ethel Berger           | Saul Cardenas             | Kenya Corley      | Lucy Diaz           | Lensly Gay          |
| Susan Addiss        | Meredith Binford       | Tiffany Cari              | Marilyn Cormack   | Tyree Dickey        | Gordon Geballe      |
| Myles Alderman      | Nan Birdwhistell       | Giselle Carlotta-McDonald | Kathleen Cosgrove | Jason Dorsey        | Anite Gelin         |
| Nancy Alderman      | Remi Boatright         | Emily Casaretto           | Betse Courtmanche | Jill Dotlo          | Eugenie Gentry      |
| Nancy Alexander     | Arthur Bogen           | Timothy Cashman           | John Courtmanche  | Anaedrea Douglas    | Evelyn Gibbs        |
| Janet Alfano        | Lily Bohen James       | Addys Castillo            | Kenneth Cousar    | Diane Dow           | Krista Gibbs        |
| Tatiana Alicea      | Blannie Bostic         | Yoo Jin Chang             | Cheryl Covington  | Alfreda Edwards     | Lottie Gillard      |
| Yahaira Alvarado    | Ashika Brinkley        | Gabriela Chango           | Cerrella Craig    | Herman Edwards      | James Godley        |
| Yury Maciel Andrews | Chester Brodnicki      | Mary Chervenak            | Kanesha Crenshaw  | Mary Elia           | Miriam Gohara       |
| Nadia Armeen        | Sharon Brooks          | Barbara Chesler           | Hannah Croasmun   | Pat Elia            | Joanne Goldblum     |
| Esther Armmand      | Diane Brown            | TJ Clark II               | Tony Curtis       | Toni Ellis          | Derrick Gordon      |
| Clarence Ashe       | Morgan Brown           | Brenda Clay-Ozene         | Maria Damiani     | Sheila Evans        | John Gordon         |
| Judith August       | Khalilah Brown-Dean    | Erik Clemons              | Laura Daniels     | Fay Evans           | Samone Gordon       |
| Stephen August      | Joe Brummer            | Karen Clute               | Robert Dannies    | Alan Ewing          | Curtis Gore         |
| Helene Augustine    | Mary Jane Burt         | Delphine Clyburn          | Calvina Dargbe    | Xia Feng            | Maureen Gorman      |
| Alfredo Axtmayer    | Emily Byrne            | Roxanne Coady             | Tara Davila       | Amy Fenollosa       | Sandra Grant        |
| Michelle Baker      | Heather Calabrese      | Dedra Cole                | Andre Davis       | Emily Fine          | Thema Graves        |
| Latoya Baldwin      | Yolanda Caldera-Durant | Carlos Collazo            | Linda Davis       | Joelle Fishman      | F. Herbert Gruendel |
| Willette Barnett    | Neva Caldwell          | Luz Colville              | Maudest Davis     | Norman Forrester    | Jaclyn Hanson       |
| Sandra Barron       | Susan Canteen          | William Colwell           | Kellyann Day      | Brenda Foskey-Cyrus | Annie Harper        |
| Leshe Barton        | Desiree Capoaso        | Mary Beth Congdon         | Robin Dejesus     | Taisha Franklin     | Laura Harrell       |
| Alice Baxter        |                        |                           | Elizabeth Demir   | Lori Frazier        | Brenda Harris       |

# MORE THAN EVER

|                     |                        |                  |                         |                       |                      |
|---------------------|------------------------|------------------|-------------------------|-----------------------|----------------------|
| Kenn Harris         | Clement Lewin          | Louis Nixon      | Jennifer Rivera         | Patricia Small        | Janna Wagner         |
| Maxine Harris       | Pam Linder             | Clara Nixon-Loyd | Frances Rivera-Bragg    | Gary Smart            | Charles Wakerley     |
| Priscilla Hayes     | Charles Long           | Flemming Norcott | Natasha Rivera-LaButhie | Amos Smith            | Diana Wakerley       |
| Rachel Heerema      | Sarah Long             | Holly O'Brien    | Elizabeth Robinson      | Caroline Smith        | John Wakerley        |
| Travon Henderson    | Ingi-Mai Loorand       | Barbara Oliver   | Takima Robinson         | Virginia Soto         | Genevive Walker      |
| Cassandra Herera    | Maribel Lopez          | Carrie O'Neil    | Tressa Spears Jackson   | Tressa Spears Jackson | LaKeisha Walker      |
| Leslie Higgins      | Daviya Lyons           | Marcus Paca      | Leyda (Lolli) Rodriguez | Cynthia Steer         | Marty Wallace        |
| Carlton Highsmith   | Gerald Antunes         | John Padilla     | Yaritza Roman           | Verta Stevenson       | Dena Wallerson       |
| Curtis Hill         | Nancy Maasbach         | Jordy Padilla    | Magdalena Rosales-Alban | Frederick Streets     | James Wareck         |
| Howard Hill         | Wanda Malave           | Abel Padro       | Carol Ross              | Pat Stuart            | Shaquesha Washington |
| Colleen Hines       | Sherman Malone         | Cynthia Parker   |                         | Camille Suggs         |                      |
| Hope Howard         | Ebony Manning          |                  |                         |                       |                      |
| Jane Hull           | Sada Marshall          |                  |                         |                       |                      |
| Zoe Hunter          | Althea Marshall Brooks |                  |                         |                       |                      |
| Marsha Hurt         | Andrea Martinez        |                  |                         |                       |                      |
| Mubarakah Ibrahim   | Angelica Matos         |                  |                         |                       |                      |
| Yadira Ijeh         | Miguel Mattia-Uribe    |                  |                         |                       |                      |
| Liza Janssen Petra  | Adrienne Mayo          |                  |                         |                       |                      |
| James Jenkins       | Janic Maysonet         |                  |                         |                       |                      |
| Jorge Jimenez       | Latasha McClain        |                  |                         |                       |                      |
| Kim Johannson       | Latoya McCrea          |                  |                         |                       |                      |
| Daisa Johnson       | Curlena McDonald       |                  |                         |                       |                      |
| Shanice Johnson     | Donna McGrath          |                  |                         |                       |                      |
| William Johnson     | Shantasia Mckee        |                  |                         |                       |                      |
| Tanya Jones         | Renee Mehra            |                  |                         |                       |                      |
| Annie Garcia Kaplan | Maria Mojica           |                  |                         |                       |                      |
| Tirzah Kemp         | Andrea Moore           |                  |                         |                       |                      |
| Christine Kim       | Melinda Moore          |                  |                         |                       |                      |
| Germano Kimbro      | Rodney Moore           |                  |                         |                       |                      |
| Tyionna King        | Robin Moore-Evans      |                  |                         |                       |                      |
| Ed Kisluk           | Claire Morduch         |                  |                         |                       |                      |
| Shakaya Kitchens    | Eldren Morrison        |                  |                         |                       |                      |
| Richard Knoll       | Jeanette Morrison      |                  |                         |                       |                      |
| Thomas Knox         | Loria Morrison         |                  |                         |                       |                      |
| Edward Konowitz     | Montrel Morrison       |                  |                         |                       |                      |
| Lauren Korman       | Gammy Moses            |                  |                         |                       |                      |
| Caren Lang          | Wali Muhammad          |                  |                         |                       |                      |
| Robert Laska        | Fernando Muniz         |                  |                         |                       |                      |
| Kashonda Lawrence   | Tennille Murphy        |                  |                         |                       |                      |
| Frederick Leaf      | Radouane Nasry         |                  |                         |                       |                      |
| Cheryl Leeks        | Bidisha Nath MD, MPH   |                  |                         |                       |                      |
| Robert Leighton     | David Newton           |                  |                         |                       |                      |
| Karen Lenahan       | William Nimons         |                  |                         |                       |                      |
| Kia Levey           |                        |                  |                         |                       |                      |

“I view volunteerism as social activism so I’ve increased my time volunteering for local nonprofits.”

### A Foundation Donor

|                  |                          |                       |                           |
|------------------|--------------------------|-----------------------|---------------------------|
| Ruth Parkins     | Sheilah Rostow           | Helen Suggs           | Nijija-Ife Waters         |
| Tracey Parks     | Jean Rozett              | Jeanette Sykes        | Cynthia Watson            |
| Ms. Pearl        | James Ryan               | Linda Sylvester       | Ronnet Watts              |
| Karen Peart      | Alice Ryu                | Cassie Taylor         | Sorini West               |
| Dyric Petaway    | Shelley Saczynski        | Caprice Taylor Mendez | Clinton Weston            |
| Edith Peters     | Deborah Salters          | T'rome Telford        | Essence Weston Denny      |
| Doreen Picagli   | Raymond Sanders          | James Thibault        | Desiree White             |
| Trisha Pitter    | Rosa Santana             | James Tickey          | Claudine Wilkins-Chambers |
| Norine Polio     | Raquel Santiago-Martinez | Vincent Tinnerello    | Joanne Willcox            |
| Melanie Post     | David Schaefer           | Barbara Tinney        | Valencia Williams         |
| Libby Protzman   | Eric Schonewald          | Rena Tobey            | Tamara Wilson             |
| Lee Purvis       | Patricia Scussel         | Evelyn Tomasello      | Laronda Winfrey           |
| Deborah Quinone  | Barbara Segaloff         | Bruce Trammell        | Whitney Woodhouse         |
| Valen Grandelski | Sandra Senich            | Ed Trimble            | Diane Young Turner        |
| Leslie Rascati   | N'Zinga Shani            | Idris Trotman         | Roman Zajac               |
| Carolyn Ray      | Galit Sharma             | Snow Turner           |                           |
| Samara Redwine   | Efrain Urbina            |                       |                           |
| Gloria Reed      | Michael Van Leesten      |                       |                           |
| Jane Shaw        | Santia Vennett           |                       |                           |
| Amelia Sherwood  | Joseph Vidro             |                       |                           |
| D. Ellen Shuman  | Faris Virani             |                       |                           |
| Mayra Sierra     | Diane Visconti           |                       |                           |
| Louis Silva      |                          |                       |                           |
| Ashley Sklar     |                          |                       |                           |

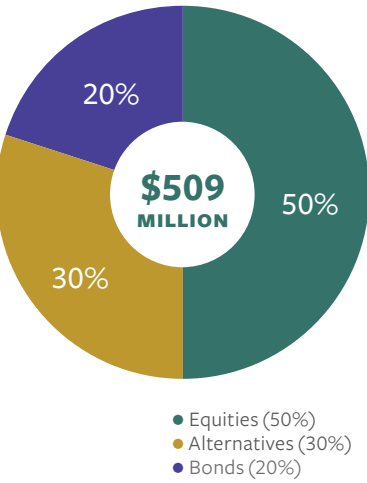


# COMMUNITY NOW

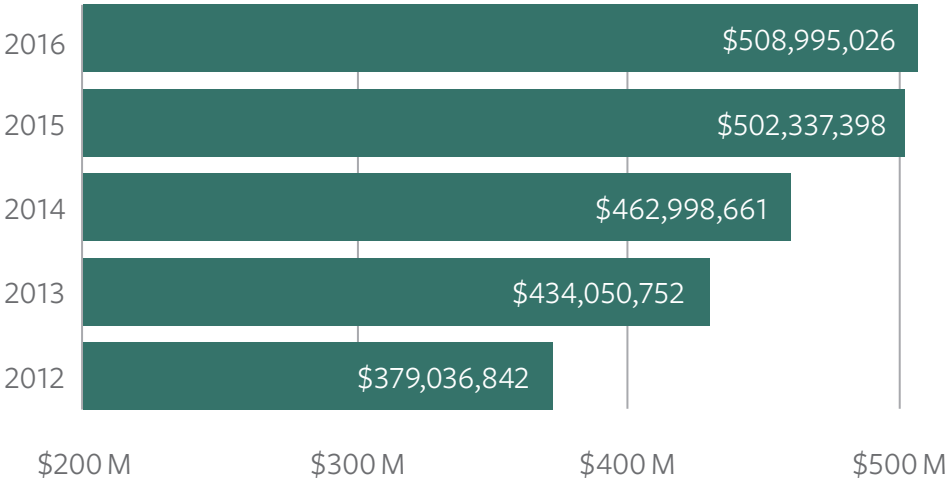
## Investments

The Community Foundation’s assets grew to \$509 Million as of December 31, 2016. The annualized net investment return of The Corporation since 1995 has been 8.4% net of investment management fees, surpassing both its market-driven benchmark and the performance of almost all comparably-sized community foundations nationwide.

Target Asset Allocation



Total Assets in Millions



### Investments in Mission Related Ventures Growing

The Community Foundation has allocated a small portion of its endowment to make strategic investments in and for local nonprofit and for-profit ventures that it believes will produce positive long-term community benefits. Commitments made include: a convertible loan for a local, all-natural juice company that is creating local jobs, a convertible loan to a digital health and wellness start-up focused on diabetes and diabetes management, and an investment in a pay-for-success contract for a local, evidenced-based program working with mothers around mental health and depression. The Foundation plans on making more investments in the future as worthy opportunities present themselves. The MRI (Mission Related Investments) program also leverages its impact through support from individual and institutional donors, as well as other local, regional and national funding partners. At right is a list of current and past MRI investments.

| Project  | Transaction Type                    | Partners   |
|--|-------------------------------------|--|
| Fitscript  | Convertible loan                    | Connecticut Innovations  |
| Freshbev LLC   | Convertible loan                    | A local foundation funding partner                                 |
| GDCCDC -Dwight Plaza                                     | Term loan                           | Local Initiatives Support Corporation and Start Community Bank     |
| Greater New Haven Community Loan Fund                    | Low-interest loan                   |  |
| MOMS (approved and pending)                              | Subordinated debt                   | National collaboration of funders                                  |
| Mutual Housing   | Low-interest loan                   | Fleet Bank Community Reinvestment Funds                            |
| First Niagara Home Ownership Fund (approved and pending) | Forgivable loans for home ownership | NAACP, Neighborhood Housing Services, local financial institutions |
| Neighborhood Housing                                     | Low-interest loan                   | Fleet Bank Community Reinvestment Funds                            |
| Neighborhood Music School                                | Loan guaranty                       | Capital for Change Inc.  |
| New Haven Teachers' Home Ownership                       | No-interest 2nd mortgages           | A local foundation funding partner                                 |
| Start Community Bank                                     | Demand deposit                      |  |

# MORE THAN EVER

## Financials

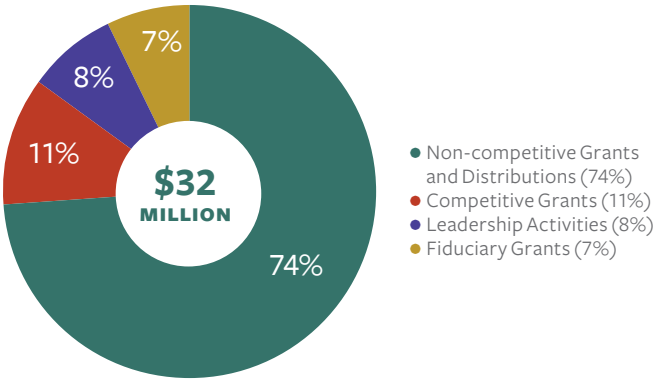
Combined Statements of Financial Position

|  | 2016                  | 2015                  |
|--|-----------------------|-----------------------|
| <b>Assets</b>                                    |                       |                       |
| Cash and Cash Equivalents                        | \$ 1,907,231          | \$ 4,734,075          |
| Investments at Market Value — Component Funds    | 338,191,021           | 334,361,727           |
| Investments at Market Value — Organization Funds | 160,603,988           | 152,861,703           |
| Investment in Real Estate                        | 2,801,250             | 3,453,361             |
| <b>Total Investments</b>                         | <b>503,503,490</b>    | <b>495,410,866</b>    |
| Mission-Related Investments                      | 2,474,000             | 371,000               |
| Contributions Receivable                         | 1,577,940             | 4,617,504             |
| Grants Receivable                                | 346,354               | 873,563               |
| Split-Interest Agreements                        | 624,531               | 557,634               |
| Other Assets                                     | 15,322                | 45,287                |
| Furniture and Equipment, Net                     | 453,389               | 461,544               |
| <b>Total Assets</b>                              | <b>\$ 508,995,026</b> | <b>\$ 502,337,398</b> |
| <b>Liabilities and Net Assets</b>                |                       |                       |
| <b>Liabilities</b>                               |                       |                       |
| Accounts Payable and Accrued Expenses            | \$ 469,925            | \$ 320,381            |
| Organization Funds                               | 160,603,988           | 152,861,703           |
| Liabilities Under Split-Interest Agreements      | 385,157               | 395,898               |
| Grants Payable                                   | 1,855,229             | 2,739,590             |
| <b>Total Liabilities</b>                         | <b>163,314,299</b>    | <b>156,317,572</b>    |
| <b>Net Assets</b>                                |                       |                       |
| Unrestricted                                     | 344,465,200           | 344,877,335           |
| Temporarily Restricted                           | 1,215,527             | 1,142,491             |
| <b>Total Net Assets</b>                          | <b>345,680,727</b>    | <b>346,019,826</b>    |
| <b>Total Liabilities and Net Assets</b>          | <b>\$ 508,995,026</b> | <b>\$ 502,337,398</b> |

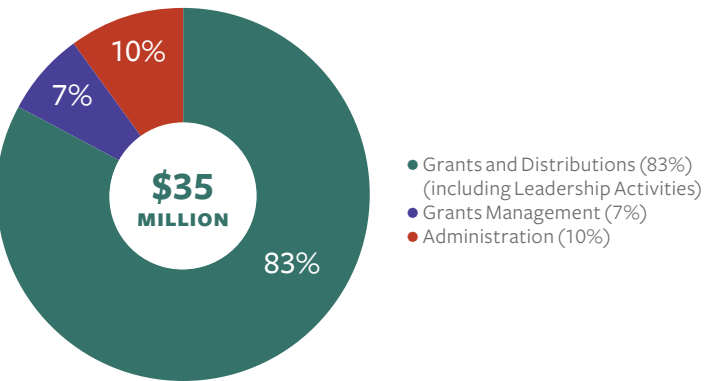
Combined Statements of Activities

|   | 2016                  | 2015                  |
|---|-----------------------|-----------------------|
| <b>Revenue, Gains and Other Support</b>                   |                       |                       |
| Contributions   | \$ 23,008,820         | \$ 67,372,643         |
| Less Contributions to Organization Funds                  | (10,325,708)          | (47,703,289)          |
| <b>Net Contributions</b>                                  | <b>12,683,112</b>     | <b>19,669,354</b>     |
| Investment Gain, Net                                      | 13,519,328            | 3,766,011             |
| Split-Interest Agreements Released from Restrictions      | —                     | —                     |
| Change in Value of Split-Interest Agreements, Net         | 43,201                | 24,276                |
| <b>Total Revenue, Gains and Other Support</b>             | <b>\$ 26,245,641</b>  | <b>\$ 23,459,641</b>  |
| <b>Expense</b>  |                       |                       |
| Grants and Distributions, Approved Net                    | \$ 29,211,759         | \$ 30,610,700         |
| Grants for Program Management and Direct Grant Activities | 2,484,611             | 2,491,053             |
| <b>Total Grants and Distributions Expense</b>             | <b>31,696,370</b>     | <b>33,101,753</b>     |
| Less Distributions from Organization Funds                | (8,465,120)           | (8,743,111)           |
| <b>Net Grant and Distributions Expense</b>                | <b>23,231,250</b>     | <b>24,358,642</b>     |
| Financial, Endowment and Investment Management            | 1,273,261             | 1,098,437             |
| Development, Donor Services and Fund Stewardship          | 904,910               | 942,651               |
| Management, Leadership and Operations                     | 1,175,319             | 935,704               |
| <b>Total Administration Expense</b>                       | <b>3,353,490</b>      | <b>2,976,792</b>      |
| <b>Total Expense</b>                                      | <b>\$ 26,584,740</b>  | <b>\$ 27,335,434</b>  |
| Increase (Decrease) in Net Assets                         | (339,099)             | (3,875,793)           |
| Net Assets — Beginning of Year                            | 346,019,826           | 349,895,619           |
| <b>Net Assets — End of Year</b>                           | <b>\$ 345,680,727</b> | <b>\$ 346,019,826</b> |

Total Grants and Grants Management Expense



Total Expense



\*Complete audited financial statements of The Community Foundation for Greater New Haven, which include the Valley Community Foundation in accordance with generally accepted accounting principles, are available at [cfgnh.org/financials](http://cfgnh.org/financials)



# COMMUNITY NOW MORE THAN EVER

## Professional Staff\*

### Executive

William W. Ginsberg  
*President and CEO*

Angela G. Powers  
*Interim Sr. Vice President for  
Planning and Operations*

Leigh Higgins  
*Sr. Director for  
Professional Development  
and Executive Office*

Ellen Perrotti  
*Administrative Associate*

Jolyn Walker  
*Administration Officer*

### Human Resources and Organizational Culture

Leon Bailey Jr.  
*Sr. Vice President for  
Human Resources and  
Organizational Culture*

Lisa Carter  
*Human Resources Manager*

Leigh Higgins  
*Sr. Director for  
Professional Development  
and Executive Office*

### Development, Stewardship, Donor Services and Communications

Angela G. Powers  
*Interim Sr. Vice President for  
Planning and Operations, and  
Sr. Vice President for Stewardship  
and Communications*

Dotty Weston-Murphy  
*Interim Sr. Vice President for  
Development and Donor Services*

Carmen Burgos  
*Development Associate*

Tricia Caldwell  
*Director of Communications*

Sharon Cappetta  
*Director of Development*

Kathleen Cei  
*Communications Officer*

Linda M. Estacion  
*Director of Donor Services and  
Development Operations*

Kelli R. Gibson  
*Development Associate*

Ratasha Smith  
*Communications Officer*

Deborah L. Wright  
*Philanthropic Officer*

### Finance, Investments, Administration and Technology

A.F. Drew Alden  
*Sr. Vice President for  
Investments, CFO, and  
Chief Compliance Officer*

Diane Deschenes  
*Endowment Associate*

Jennifer Glover-Keller  
*Investment Services Manager*

Tamara Gray  
*Data Management Associate*

Brandi Kryvonis  
*Disbursements Officer*

Marcie Monaco  
*Director of Finance  
and Accounting*

José Ruiz  
*Endowment Associate*

Vilandria Turner  
*Director of Information  
Management and Analysis*

### Grantmaking and Strategy

Christina M. Ciociola  
*Sr. Vice President for  
Grantmaking and Strategy*

Sarah J. H. Fabish  
*Vice President for Grantmaking  
and Scholarships*

Kenn Harris  
*Vice President for  
Community Engagement, and  
Director of New Haven  
Healthy Start*

Denise Canning  
*Grants Manager*

Cynthia Chan  
*Program Assistant  
New Haven Healthy Start*

Stephanie Chung  
*Nonprofit Relations Manager*

Eliezer Lee Cruz  
*Director of Community Outreach*

Jackie Downing  
*Director of Grantmaking  
and Nonprofit Effectiveness*

Matthew Higbee  
*Research and  
Communications Officer*

Caprice Taylor Mendez  
*Strategic Program Manager*

Natasha Ray  
*Core Services Manager  
New Haven Healthy Start*

Logan Roddy  
*Grantmaking Associate*

Kara Straun  
*Knowledge and  
Evaluation Manager*



**Copywriting:** Tricia Caldwell, William Ginsberg, Matthew Higbee, Angela Powers, Ratasha Smith.  
**Photography:** Paul Bass, Kathleen Cei, Ian Christmann, Mara Lavitt, Judy Sirota Rosenthal, Melanie Stengel.  
Inspirations and highlights photos provided by the organization; photos for new funds supplied by the donor or donor's family.  
**Design:** Group C Inc. **Printing:** GHP Media

Printed on uncoated paper with post-consumer recycled content using vegetable-based inks to be more environmentally friendly.





**Now more than ever, this is a moment to stand up for our community by recommitting to one another and to our shared belief that we can build a stronger future for Greater New Haven by coming together and acting together.**



The **COMMUNITY** Foundation *for* Greater New Haven

203-777-2386 tel 203-787-6584 fax

70 Audubon Street New Haven, CT 06510

cfgnh.org @ f t